

1

# SPECTRA

Trumpet Horn Xenon Strobe  
 IP Rating: IP65  
 Temp: -25 °C to +50 °C  
 Unit weight: 219g  
 CE, UKCA

Order code Voltage  
 H100TX024G/x 24V AC/DC  
 • 24V dc 10mA  
 • 24V ac 50Hz 24mA  
 • Beacon Current Consumption  
 • 24V dc 135mA  
 • 24V ac 50Hz 75mA

H100TX115G/x 115V AC  
 • 115V ac 50/60Hz 19mA  
 • Beacon Current Consumption  
 • 115V ac 50/60Hz 30mA

H100TX230G/x 230V AC  
 • 230V ac 50/60Hz 10mA  
 • Beacon Current Consumption  
 • 230V ac 50/60Hz 20mA



D152-00-101-IS Issue 1

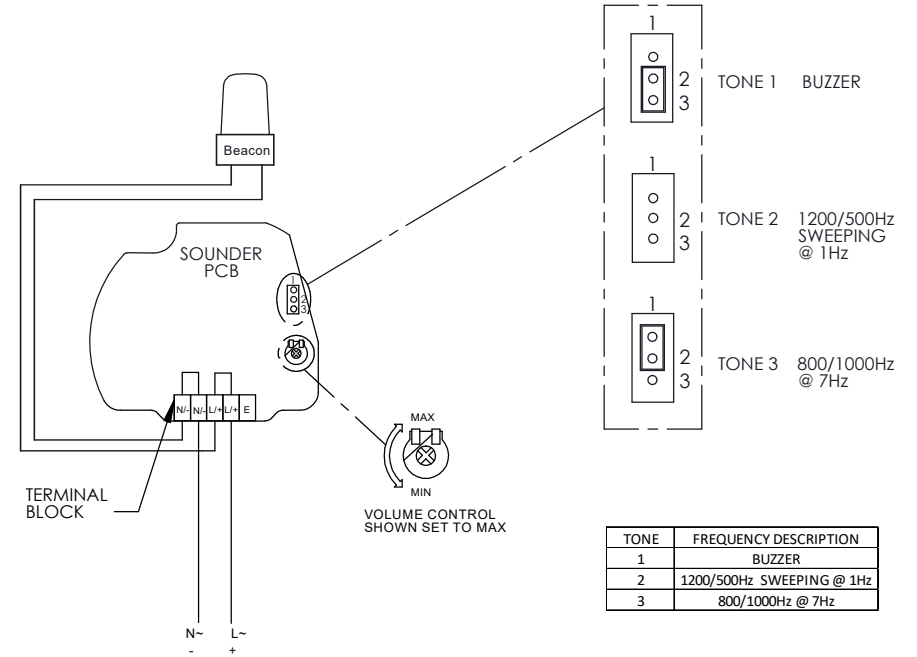
Sheet 1 of 2  
19/01/2023Tel : +44 (0)2 8743 8880  
www.e2s.com

# H100 TX

Dimensions :  $\varnothing 85 \times 241.2\text{mm}$   
 1.5mm<sup>2</sup> terminals  
 Cable entry: 1 x 5-7mm push  
 through grommet

x = Lens colour  
 R = Red A = Amber  
 B = Blue C = Clear  
 G = Green Y = Yellow

3

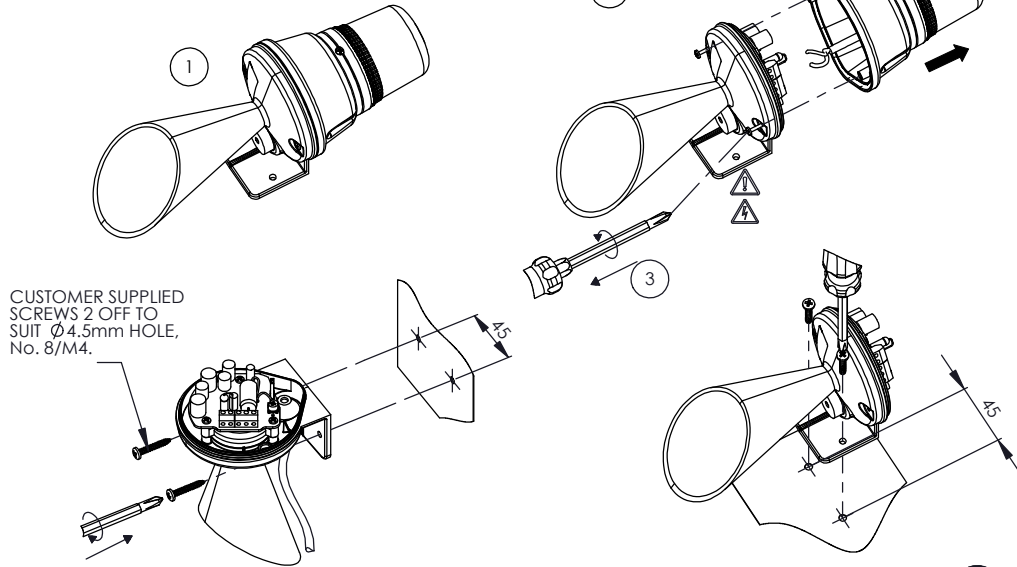


2

- ⚠ ATTENTION:** Installation must be carried out by an electrician in compliance with the latest codes and regulations.
- ⚠ ATTENTION:** Disconnect from power source before installation or service to prevent electric shock.
- ⚠ ATTENTION:** On strobe beacons allow a minimum of 2 minutes for hazardous high voltage to discharge from unit.
- ⚠ ATTENTION:** Lens on unit will be hot allow to cool prior to removal.

4

# 5 SPECTRA H 100 TX



D152-00-101-IS Issue 1

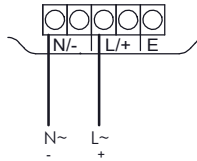
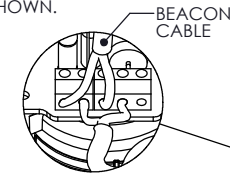
Sheet 2 of 2  
19/01/2023

Tel : +44 (0)2 8743 8880  
www.e2s.com



7

8 CONNECT THE BEACON CABLES TO TERMINAL AS SHOWN.

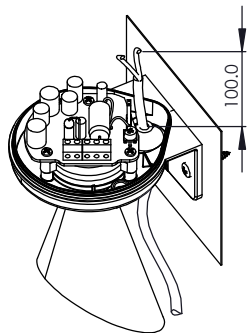


TERMINAL BLOCK	A/C INPUT	D/C INPUT
N/-	N~	-
N/-	N~(FROM BEACON)	-(FROM BEACON)
L/+	L~	+
L/+	L~(FROM BEACON)	+(FROM BEACON)
E		

6

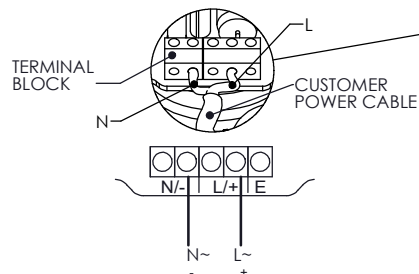


4 INSERT CABLE THROUGH GROMMET, STRIP CABLE TO LENGTH.

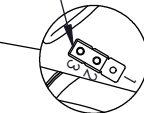


5 MAKE SURE THE CABLE IS TUCKED FIRMLY INTO CABLE LOCKS IN 2 POS'NS

6 CONNECT CABLE AS SHOWN



7 PLACE THE HEADER PIN TO REQUIRED TONE SEE SHEET 1, FOR DETAIL.



Dimensions in mm

8

