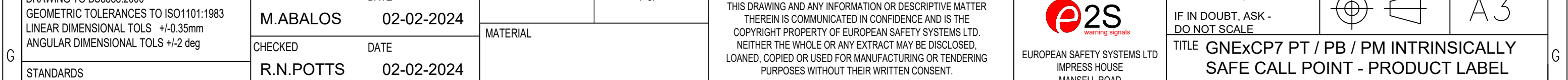
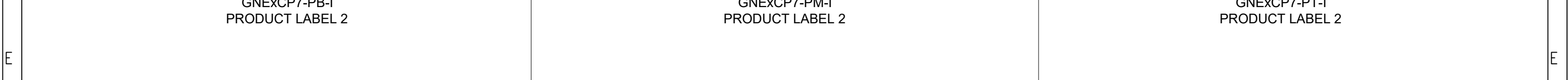
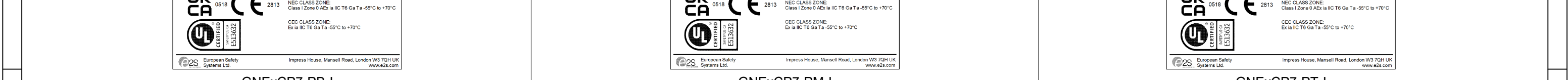
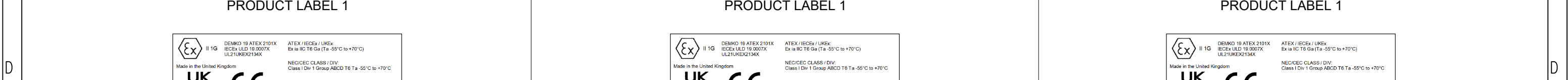
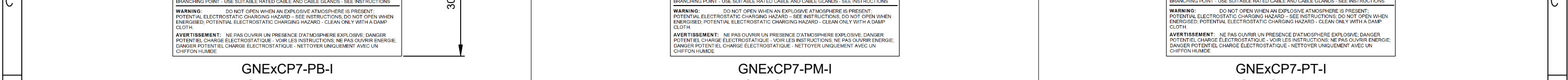
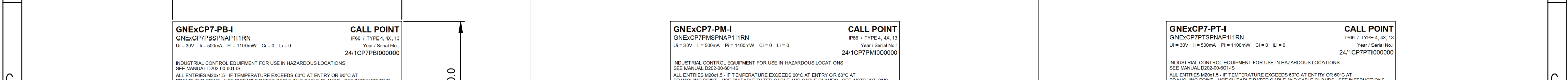
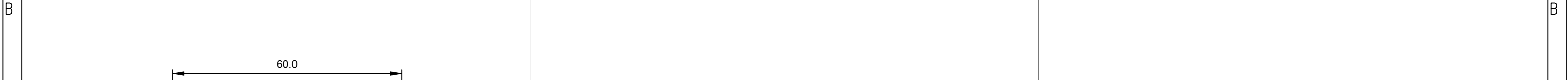


A	ISSUE	MOD No.	INITIAL/DATE
	1		Introduction MA 02-02-2024



G	DRAWING TO BS8888:2000 GEOMETRIC TOLERANCES TO ISO1101:1983 LINEAR DIMENSIONAL TOLS +/-0.35mm ANGULAR DIMENSIONAL TOLS +/-2 deg	DRAWN M.ABALOS DATE 02-02-2024	SURFACE FINISH	WEIGHT (Kg)	THIS DRAWING AND ANY INFORMATION OR DESCRIPTIVE MATTER THEREIN IS COMMUNICATED IN CONFIDENCE AND IS THE COPYRIGHT PROPERTY OF EUROPEAN SAFETY SYSTEMS LTD. NEITHER THE WHOLE OR ANY EXTRACT MAY BE DISCLOSED, LOANED, COPIED OR USED FOR MANUFACTURING OR TENDERING PURPOSES WITHOUT THEIR WRITTEN CONSENT.	 EUROPEAN SAFETY SYSTEMS LTD IMPRESS HOUSE MANSELL ROAD ACTON LONDON W3 7QH WWW.E2S.COM	ALL DIMENSIONS IN MM IF IN DOUBT, ASK - DO NOT SCALE		A3	
	STANDARDS GNExCP7 CALL POINTS	CHECKED R.N.POTTS DATE 02-02-2024	MATERIAL	ALTERNATIVE MATERIAL			TITLE GNExCP7 PT / PB / PM INTRINSICALLY SAFE CALL POINT - PRODUCT LABEL	SCALE 1:1	SHEET 1 of 2	DRAWING NUMBER D202-09-601
	APPROVED R.N.POTTS DATE 02-02-2024	 EUROPEAN SAFETY SYSTEMS LTD. AS PER LATEST DATE OF ISSUE SHOWN ABOVE								

60.0

GNExCP7-PB-I GNExCP7PSPNAP111RN Ui = 30V Ii = 500mA Pi = 1100mW Ci = 0 Li = 0 Year / Serial No.: 24/1CP7PB1000000	CALL POINT IP66 / TYPE 4, 4X, 13 Year / Serial No.: 24/1CP7PB1000000
INDUSTRIAL CONTROL EQUIPMENT FOR USE IN HAZARDOUS LOCATIONS SEE MANUAL D202-09-601-IS ALL ENTRIES M20x1.5 - IF TEMPERATURE EXCEEDS 60°C AT ENTRY OR 60°C AT BRANCHING POINT - USE SUITABLE RATED CABLE AND CABLE GLANDS - SEE INSTRUCTIONS WARNING: DO NOT OPEN WHEN AN EXPLOSIVE ATMOSPHERE IS PRESENT. POTENTIAL ELECTROSTATIC CHARGING HAZARD - SEE INSTRUCTIONS. DO NOT OPEN WHEN ENERGISED. POTENTIAL ELECTROSTATIC CHARGING HAZARD - CLEAN ONLY WITH A DAMP CLOTH. AVERTISSEMENT: NE PAS OUVRIER UN PRESENCE D'ATMOSPHERE EXPLOSIVE. DANGER POTENTIEL CHARGE ELECTROSTATIQUE - VOIR LES INSTRUCTIONS. NE PAS OUVRIER ENERGIE. DANGER POTENTIEL CHARGE ELECTROSTATIQUE - NETTOYER UNIQUEMENT AVEC UN CHIFFON HUMIDE	

30.0

**GNExCP7-PB-I
PRODUCT LABEL 1**

 DEMKO 19 ATEX 2101X IECEx ULD 19.0007X UL21UKEX2134X Made in the United Kingdom	ATEX / IECEx / UKEx Ex ia IIC T6 Ga (Ta -55°C to +70°C) NEC/CEC CLASS / DIV: Class I Div 1 Group ABCD T6 Ta -55°C to +70°C NEC CLASS ZONE: Class I Zone 0 AEx ia IIC T6 Ga Ta -55°C to +70°C CEC CLASS ZONE: Ex ia IIC T6 Ga Ta -55°C to +70°C	 European Safety Systems Ltd. Impress House, Mansell Road, London W3 7QH UK www.e2s.com
--	---	--

**GNExCP7-PB-I
PRODUCT LABEL 2**

60.0

GNExCP7-PM-I GNExCP7PMSNAP111RN Ui = 30V Ii = 500mA Pi = 1100mW Ci = 0 Li = 0 Year / Serial No.: 24/1CP7PM1000000	CALL POINT IP66 / TYPE 4, 4X, 13 Year / Serial No.: 24/1CP7PM1000000
INDUSTRIAL CONTROL EQUIPMENT FOR USE IN HAZARDOUS LOCATIONS SEE MANUAL D202-09-601-IS ALL ENTRIES M20x1.5 - IF TEMPERATURE EXCEEDS 60°C AT ENTRY OR 60°C AT BRANCHING POINT - USE SUITABLE RATED CABLE AND CABLE GLANDS - SEE INSTRUCTIONS WARNING: DO NOT OPEN WHEN AN EXPLOSIVE ATMOSPHERE IS PRESENT. POTENTIAL ELECTROSTATIC CHARGING HAZARD - SEE INSTRUCTIONS. DO NOT OPEN WHEN ENERGISED. POTENTIAL ELECTROSTATIC CHARGING HAZARD - CLEAN ONLY WITH A DAMP CLOTH. AVERTISSEMENT: NE PAS OUVRIER UN PRESENCE D'ATMOSPHERE EXPLOSIVE. DANGER POTENTIEL CHARGE ELECTROSTATIQUE - VOIR LES INSTRUCTIONS. NE PAS OUVRIER ENERGIE. DANGER POTENTIEL CHARGE ELECTROSTATIQUE - NETTOYER UNIQUEMENT AVEC UN CHIFFON HUMIDE	

30.0

**GNExCP7-PM-I
PRODUCT LABEL 1**

 DEMKO 19 ATEX 2101X IECEx ULD 19.0007X UL21UKEX2134X Made in the United Kingdom	ATEX / IECEx / UKEx Ex ia IIC T6 Ga (Ta -55°C to +70°C) NEC/CEC CLASS / DIV: Class I Div 1 Group ABCD T6 Ta -55°C to +70°C NEC CLASS ZONE: Class I Zone 0 AEx ia IIC T6 Ga Ta -55°C to +70°C CEC CLASS ZONE: Ex ia IIC T6 Ga Ta -55°C to +70°C	 European Safety Systems Ltd. Impress House, Mansell Road, London W3 7QH UK www.e2s.com
--	---	--

**GNExCP7-PM-I
PRODUCT LABEL 2**

60.0

GNExCP7-PT-I GNExCP7PTSPNAP111RN Ui = 30V Ii = 500mA Pi = 1100mW Ci = 0 Li = 0 Year / Serial No.: 24/1CP7PT1000000	CALL POINT IP66 / TYPE 4, 4X, 13 Year / Serial No.: 24/1CP7PT1000000
INDUSTRIAL CONTROL EQUIPMENT FOR USE IN HAZARDOUS LOCATIONS SEE MANUAL D202-09-601-IS ALL ENTRIES M20x1.5 - IF TEMPERATURE EXCEEDS 60°C AT ENTRY OR 60°C AT BRANCHING POINT - USE SUITABLE RATED CABLE AND CABLE GLANDS - SEE INSTRUCTIONS WARNING: DO NOT OPEN WHEN AN EXPLOSIVE ATMOSPHERE IS PRESENT. POTENTIAL ELECTROSTATIC CHARGING HAZARD - SEE INSTRUCTIONS. DO NOT OPEN WHEN ENERGISED. POTENTIAL ELECTROSTATIC CHARGING HAZARD - CLEAN ONLY WITH A DAMP CLOTH. AVERTISSEMENT: NE PAS OUVRIER UN PRESENCE D'ATMOSPHERE EXPLOSIVE. DANGER POTENTIEL CHARGE ELECTROSTATIQUE - VOIR LES INSTRUCTIONS. NE PAS OUVRIER ENERGIE. DANGER POTENTIEL CHARGE ELECTROSTATIQUE - NETTOYER UNIQUEMENT AVEC UN CHIFFON HUMIDE	

30.0

**GNExCP7-PT-I
PRODUCT LABEL 1**

 DEMKO 19 ATEX 2101X IECEx ULD 19.0007X UL21UKEX2134X Made in the United Kingdom	ATEX / IECEx / UKEx Ex ia IIC T6 Ga (Ta -55°C to +70°C) NEC/CEC CLASS / DIV: Class I Div 1 Group ABCD T6 Ta -55°C to +70°C NEC CLASS ZONE: Class I Zone 0 AEx ia IIC T6 Ga Ta -55°C to +70°C CEC CLASS ZONE: Ex ia IIC T6 Ga Ta -55°C to +70°C	 European Safety Systems Ltd. Impress House, Mansell Road, London W3 7QH UK www.e2s.com
--	---	--

**GNExCP7-PT-I
PRODUCT LABEL 2**

	1	2	3	4	5	6	7	8	9	10
A								ISSUE	MOD No.	INITIAL/DATE
B								1		Introduction MA 02-02-2024
C	<p>GNExCP7-PB-IR CALL POINT IP66 / TYPE 4, 4X, 13 Li = 30V Ii = 500mA Pi = 1100mW Ci = 0 Li = 0 Year / Serial No.: 24/1CP7PBIR000000</p> <p>INDUSTRIAL CONTROL EQUIPMENT FOR USE IN HAZARDOUS LOCATIONS SEE MANUAL D202-09-601-IS</p> <p>ALL ENTRIES M20x1.5 - IF TEMPERATURE EXCEEDS 60°C AT ENTRY OR 60°C AT BRANCHING POINT - USE SUITABLE RATED CABLE AND CABLE GLANDS - SEE INSTRUCTIONS</p> <p>WARNING: DO NOT OPEN WHEN AN EXPLOSIVE ATMOSPHERE IS PRESENT. POTENTIAL ELECTROSTATIC CHARGING HAZARD - SEE INSTRUCTIONS. DO NOT OPEN WHEN ENERGISED. POTENTIAL ELECTROSTATIC CHARGING HAZARD - CLEAN ONLY WITH A DAMP CLOTH.</p> <p>AVERTISSEMENT: NE PAS OUVRIER UN PRESENCE D'ATMOSPHERE EXPLOSIVE. DANGER POTENTIEL CHARGE ELECTROSTATIQUE - VOIR LES INSTRUCTIONS. NE PAS OUVRIER ENERGIE. DANGER POTENTIEL CHARGE ELECTROSTATIQUE - NETTOYER UNIQUEMENT AVEC UN CHIFFON HUMIDE.</p>									
D	<p>GNExCP7-PB-IR PRODUCT LABEL 2</p>									
E	<p>GNExCP7-PM-IR CALL POINT IP66 / TYPE 4, 4X, 13 Li = 30V Ii = 500mA Pi = 1100mW Ci = 0 Li = 0 Year / Serial No.: 24/1CP7PMIR000000</p> <p>INDUSTRIAL CONTROL EQUIPMENT FOR USE IN HAZARDOUS LOCATIONS SEE MANUAL D202-09-601-IS</p> <p>ALL ENTRIES M20x1.5 - IF TEMPERATURE EXCEEDS 60°C AT ENTRY OR 60°C AT BRANCHING POINT - USE SUITABLE RATED CABLE AND CABLE GLANDS - SEE INSTRUCTIONS</p> <p>WARNING: DO NOT OPEN WHEN AN EXPLOSIVE ATMOSPHERE IS PRESENT. POTENTIAL ELECTROSTATIC CHARGING HAZARD - SEE INSTRUCTIONS. DO NOT OPEN WHEN ENERGISED. POTENTIAL ELECTROSTATIC CHARGING HAZARD - CLEAN ONLY WITH A DAMP CLOTH.</p> <p>AVERTISSEMENT: NE PAS OUVRIER UN PRESENCE D'ATMOSPHERE EXPLOSIVE. DANGER POTENTIEL CHARGE ELECTROSTATIQUE - VOIR LES INSTRUCTIONS. NE PAS OUVRIER ENERGIE. DANGER POTENTIEL CHARGE ELECTROSTATIQUE - NETTOYER UNIQUEMENT AVEC UN CHIFFON HUMIDE.</p>									
F	<p>GNExCP7-PM-IR PRODUCT LABEL 2</p>									
	<p>GNExCP7-PT-IR CALL POINT IP66 / TYPE 4, 4X, 13 Li = 30V Ii = 500mA Pi = 1100mW Ci = 0 Li = 0 Year / Serial No.: 24/1CP7PTIR000000</p> <p>INDUSTRIAL CONTROL EQUIPMENT FOR USE IN HAZARDOUS LOCATIONS SEE MANUAL D202-09-601-IS</p> <p>ALL ENTRIES M20x1.5 - IF TEMPERATURE EXCEEDS 60°C AT ENTRY OR 60°C AT BRANCHING POINT - USE SUITABLE RATED CABLE AND CABLE GLANDS - SEE INSTRUCTIONS</p> <p>WARNING: DO NOT OPEN WHEN AN EXPLOSIVE ATMOSPHERE IS PRESENT. POTENTIAL ELECTROSTATIC CHARGING HAZARD - SEE INSTRUCTIONS. DO NOT OPEN WHEN ENERGISED. POTENTIAL ELECTROSTATIC CHARGING HAZARD - CLEAN ONLY WITH A DAMP CLOTH.</p> <p>AVERTISSEMENT: NE PAS OUVRIER UN PRESENCE D'ATMOSPHERE EXPLOSIVE. DANGER POTENTIEL CHARGE ELECTROSTATIQUE - VOIR LES INSTRUCTIONS. NE PAS OUVRIER ENERGIE. DANGER POTENTIEL CHARGE ELECTROSTATIQUE - NETTOYER UNIQUEMENT AVEC UN CHIFFON HUMIDE.</p>									
	<p>GNExCP7-PT-IR PRODUCT LABEL 2</p>									

G	DRAWING TO BS8888:2000 GEOMETRIC TOLERANCES TO ISO1101:1983 LINEAR DIMENSIONAL TOLS +/-0.35mm ANGULAR DIMENSIONAL TOLS +/-2 deg	DRAWN M.ABALOS	DATE 02-02-2024	SURFACE FINISH	WEIGHT (Kg)	THIS DRAWING AND ANY INFORMATION OR DESCRIPTIVE MATTER THEREIN IS COMMUNICATED IN CONFIDENCE AND IS THE COPYRIGHT PROPERTY OF EUROPEAN SAFETY SYSTEMS LTD. NEITHER THE WHOLE OR ANY EXTRACT MAY BE DISCLOSED, LOANED, COPIED OR USED FOR MANUFACTURING OR TENDERING PURPOSES WITHOUT THEIR WRITTEN CONSENT. EUROPEAN SAFETY SYSTEMS LTD. AS PER LATEST DATE OF ISSUE SHOWN ABOVE	 EUROPEAN SAFETY SYSTEMS LTD IMPRESS HOUSE MANSELL ROAD ACTON LONDON W3 7QH WWW.E2S.COM	ALL DIMENSIONS IN MM		A3
	STANDARDS GNExCP7 CALL POINTS	CHECKED R.N.POTTS	DATE 02-02-2024	MATERIAL	TITLE GNExCP7 PT / PB / PM INTRINSICALLY SAFE CALL POINT - PRODUCT LABEL			SCALE 1:1	SHEET 2 of 2	DRAWING NUMBER D202-09-601
		APPROVED R.N.POTTS	DATE 02-02-2024	ALTERNATIVE MATERIAL						