

A

B

C

D

E

F

ISSUE	MOD No.	INITIAL/DATE
1		INTRODUCTION DAH 08-04-2020
2		UKCA ADDED DAH 25-10-2022
3		Added LED -L & -C units. MA 05-09-2023
4		NEC / CEC RATINGS ADDED. UPDATED LAYOUT. MA 16-01-2024

A

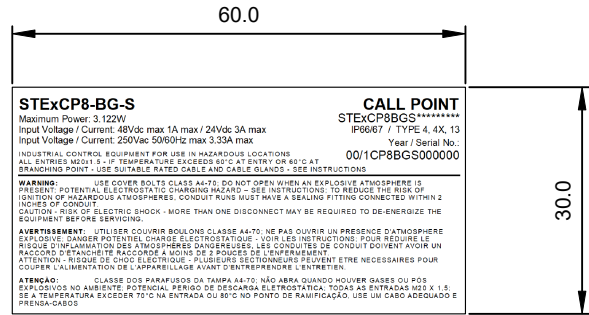
B

C

D

E

F



**STExCP8-BG-S**  
PRODUCT LABEL 1

	DEMKO 15ATEX 1589X IECEx LUD 15 0918X UL11UKEX2133X N°: IEX 20 0551X	ATEX / IECEx / UKEx / INMETRO: Ex db IIC T8 Gb Ta -55°C to +70°C
	Made in the United Kingdom 0518	NEC / CEC CLASS DIV: Class I Div 2 Group ABCD T8 (Ta -55°C to +60°C)
	2813	NEC CLASS ZONE: Class I Zone 1 AEx db IIC T8 Gb Ta -55°C to +60°C
		CEC CLASS ZONE: Ex db IIC T8 Gb Ta -55°C to +60°C
	European Safety Systems Ltd. Impress House, Mansell Road, London W3 7QH UK www.e2s.com	

**STExCP8-BG-S**  
PRODUCT LABEL 2

	DEMKO 15ATEX 1589X IECEx LUD 15 0918X UL11UKEX2133X N°: IEX 20 0551X	ATEX / IECEx / UKEx / INMETRO: Ex db IIC T8 Gb Ta -55°C to +70°C
	Made in the United Kingdom 0518	NEC / CEC CLASS DIV: Class I Div 2 Group ABCD T8 (Ta -55°C to +60°C)
	2813	NEC CLASS ZONE: Class I Zone 1 AEx db IIC T8 Gb Ta -55°C to +60°C
		CEC CLASS ZONE: Ex db IIC T8 Gb Ta -55°C to +60°C
	European Safety Systems Ltd. Impress House, Mansell Road, London W3 7QH UK www.e2s.com	

**STExCP8-BG-S-L**  
PRODUCT LABEL 1

	DEMKO 15ATEX 1589X IECEx LUD 15 0918X UL11UKEX2133X N°: IEX 20 0551X	ATEX / IECEx / UKEx / INMETRO: Ex db IIC T8 Gb Ta -55°C to +70°C
	Made in the United Kingdom 0518	NEC / CEC CLASS DIV: Class I Div 2 Group ABCD T8 (Ta -55°C to +60°C)
	2813	NEC CLASS ZONE: Class I Zone 1 AEx db IIC T8 Gb Ta -55°C to +60°C
		CEC CLASS ZONE: Ex db IIC T8 Gb Ta -55°C to +60°C
	European Safety Systems Ltd. Impress House, Mansell Road, London W3 7QH UK www.e2s.com	

**STExCP8-BG-S-L**  
PRODUCT LABEL 2

	DEMKO 15ATEX 1589X IECEx LUD 15 0918X UL11UKEX2133X N°: IEX 20 0551X	ATEX / IECEx / UKEx / INMETRO: Ex db IIC T8 Gb Ta -55°C to +70°C
	Made in the United Kingdom 0518	NEC / CEC CLASS DIV: Class I Div 2 Group ABCD T8 (Ta -55°C to +60°C)
	2813	NEC CLASS ZONE: Class I Zone 1 AEx db IIC T8 Gb Ta -55°C to +60°C
		CEC CLASS ZONE: Ex db IIC T8 Gb Ta -55°C to +60°C
	European Safety Systems Ltd. Impress House, Mansell Road, London W3 7QH UK www.e2s.com	

**STExCP8-BG-S-C**  
PRODUCT LABEL 1

	DEMKO 15ATEX 1589X IECEx LUD 15 0918X UL11UKEX2133X N°: IEX 20 0551X	ATEX / IECEx / UKEx / INMETRO: Ex db IIC T8 Gb Ta -55°C to +70°C
	Made in the United Kingdom 0518	NEC / CEC CLASS DIV: Class I Div 2 Group ABCD T8 (Ta -55°C to +60°C)
	2813	NEC CLASS ZONE: Class I Zone 1 AEx db IIC T8 Gb Ta -55°C to +60°C
		CEC CLASS ZONE: Ex db IIC T8 Gb Ta -55°C to +60°C
	European Safety Systems Ltd. Impress House, Mansell Road, London W3 7QH UK www.e2s.com	

**STExCP8-BG-S-C**  
PRODUCT LABEL 2

DRAWING TO BS8888:2000 GEOMETRIC TOLERANCES TO ISO1101:1983 LINEAR DIMENSIONAL TOLS +/-0.35mm ANGULAR DIMENSIONAL TOLS +/-2 deg	DRAWN <b>D.HOWGILL</b>	DATE <b>08-04-20</b>	SURFACE FINISH MATERIAL	WEIGHT (Kg)	THIS DRAWING AND ANY INFORMATION OR DESCRIPTIVE MATTER THEREIN IS COMMUNICATED IN CONFIDENCE AND IS THE COPYRIGHT PROPERTY OF EUROPEAN SAFETY SYSTEMS LTD. NEITHER THE WHOLE OR ANY EXTRACT MAY BE DISCLOSED, LOANED, COPIED OR USED FOR MANUFACTURING OR TENDERING PURPOSES WITHOUT THEIR WRITTEN CONSENT.	EUROPEAN SAFETY SYSTEMS LTD IMPRESS HOUSE MANSELL ROAD ACTON LONDON W3 7QH WWW.E2S.COM	ALL DIMENSIONS IN MM IF IN DOUBT, ASK - DO NOT SCALE			A3
	CHECKED <b>R.N.POTTS</b>	DATE <b>08-04-20</b>					ALTERNATIVE MATERIAL	TITLE <b>STEx CP8 BG BREAK GLASS CALL POINT                  PRODUCT LABEL</b>		
	STANDARDS <b>STEx CP8                  CALL POINTS</b>	APPROVED <b>R.N.POTTS</b>	DATE <b>08-04-20</b>	SCALE <b>1:1</b>			SHEET <b>1 of 2</b>	DRAWING NUMBER <b>D204-09-001</b>		

G

A

B

C

D

E

F

A

B

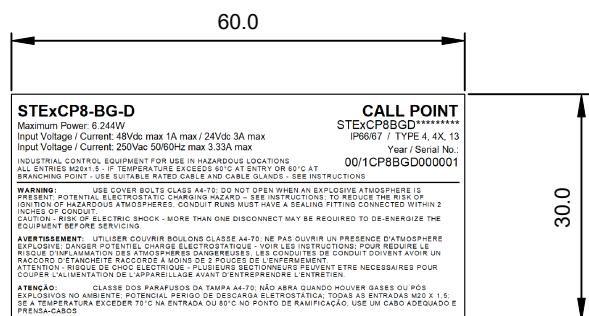
C

D

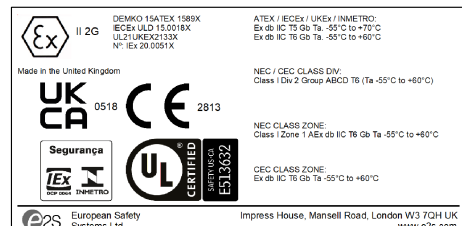
E

F

ISSUE	MOD No.	INITIAL/DATE
1		INTRODUCTION DAH 08-04-2020
2		UKCA ADDED DAH 25-10-2022
3		Added LED -L & -C units. MA 05-09-2023
4		NEC / CEC RATINGS ADDED. UPDATED LAYOUT. MA 16-01-2024



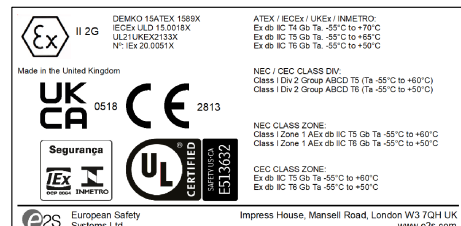
STExCP8-BG-D  
PRODUCT LABEL 1



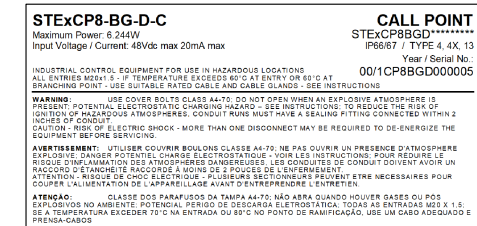
STExCP8-BG-D  
PRODUCT LABEL 2



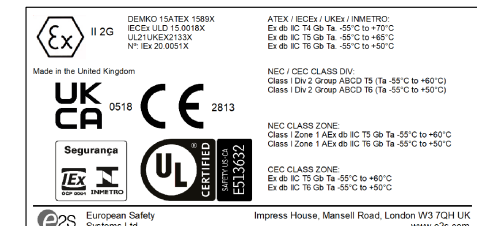
STExCP8-BG-D-L  
PRODUCT LABEL 1



STExCP8-BG-D-L  
PRODUCT LABEL 2



STExCP8-BG-D-C  
PRODUCT LABEL 1



STExCP8-BG-D-C  
PRODUCT LABEL 2

DRAWING TO BS8888:2000 GEOMETRIC TOLERANCES TO ISO1101:1983 LINEAR DIMENSIONAL TOLS +/-0.35mm ANGULAR DIMENSIONAL TOLS +/-2 deg	DRAWN	DATE	SURFACE FINISH	WEIGHT (Kg)	THIS DRAWING AND ANY INFORMATION OR DESCRIPTIVE MATTER THEREIN IS COMMUNICATED IN CONFIDENCE AND IS THE COPYRIGHT PROPERTY OF EUROPEAN SAFETY SYSTEMS LTD. NEITHER THE WHOLE OR ANY EXTRACT MAY BE DISCLOSED, LOANED, COPIED OR USED FOR MANUFACTURING OR TENDERING PURPOSES WITHOUT THEIR WRITTEN CONSENT.	 EUROPEAN SAFETY SYSTEMS LTD IMPRESS HOUSE MANSELL ROAD ACTON LONDON W3 7QH WWW.E2S.COM	ALL DIMENSIONS IN MM		A3
	CHECKED	DATE					MATERIAL		
	STANDARDS STEx CP8 CALL POINTS	APPROVED	DATE	ALTERNATIVE MATERIAL			TITLE STEx CP8 BG BREAK GLASS CALL POINT PRODUCT LABEL	SCALE 1:1	SHEET 2 of 2

G

G