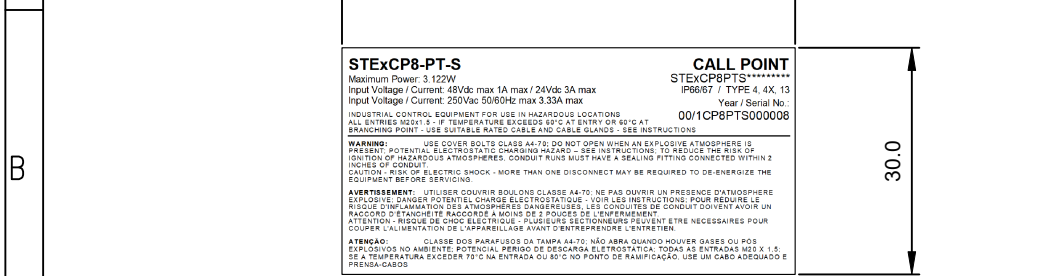


1	2	3	4	5	6	7	8	9	10												
							<table border="1"> <thead> <tr> <th>ISSUE</th> <th>MOD No.</th> <th>INITIAL/DATE</th> </tr> </thead> <tbody> <tr> <td>2</td> <td></td> <td>UKCA ADDED DAH 25-10-2022</td> </tr> <tr> <td>3</td> <td></td> <td>Added LED -L &amp; -C units. Added Sheets 2-3. MA 29-08-2023</td> </tr> <tr> <td>4</td> <td></td> <td>NEC / CEC RATINGS ADDED. UPDATED LAYOUT. MA 16-01-2024</td> </tr> </tbody> </table>	ISSUE	MOD No.	INITIAL/DATE	2		UKCA ADDED DAH 25-10-2022	3		Added LED -L & -C units. Added Sheets 2-3. MA 29-08-2023	4		NEC / CEC RATINGS ADDED. UPDATED LAYOUT. MA 16-01-2024		
ISSUE	MOD No.	INITIAL/DATE																			
2		UKCA ADDED DAH 25-10-2022																			
3		Added LED -L & -C units. Added Sheets 2-3. MA 29-08-2023																			
4		NEC / CEC RATINGS ADDED. UPDATED LAYOUT. MA 16-01-2024																			



**STExCP8-PT-S**  
Maximum Power: 3.12W  
Input Voltage / Current: 48Vdc max 1A max / 24Vdc 3A max  
Input Voltage / Current: 250Vac 50/60Hz max 3.33A max

**CALL POINT**  
STExCP8PT-S\*\*\*\*\*  
IP66/67 / TYPE 4, 4X, 13  
Year / Serial No:  
00/1CP8PTS000008

INDUSTRIAL CONTROL EQUIPMENT FOR USE IN HAZARDOUS LOCATIONS  
ALL ENTRIES MUST BE 1/2" TEMPERATURE EXCEEDS 80°C AT ENTRY OR 80°C AT BRANCHING POINT - USE SUITABLE RATED CABLE AND CABLE GLANDS - SEE INSTRUCTIONS

**WARNING:** USE COVER BOLTS CLASS AA-70. DO NOT OPEN WHEN AN EXPLOSIVE ATMOSPHERE IS PRESENT. POTENTIAL ELECTROSTATIC CHARGING HAZARD - SEE INSTRUCTIONS TO REDUCE THE RISK OF IGNITION OF HAZARDOUS ATMOSPHERES. CONDUIT RUNS MUST HAVE A SEALING FITTING CONNECTED WITHIN 2 INCHES OF CONDUIT  
CAUTION: RISK OF ELECTRIC SHOCK - MORE THAN ONE DISCONNECT MAY BE REQUIRED TO DE-ENERGIZE THE EQUIPMENT BEFORE SERVICING.

**AVERTISSEMENT:** UTILISER COUVRES BOUTONS CLASSE AA-70. NE PAS OUVRIRE UN PRÉSENCE D'ATMOSPHERE EXPLOSIVE. DANGER POTENTIEL CHARGES ÉLECTROSTATIQUES - VOIR LES INSTRUCTIONS POUR RÉDUIRE LE RISQUE D'INFLAMMATION DES ATMOSPHERES DANGEREUSES. LES CONDUITES DE CONDUIT DOIVENT AVOIR UN RACCORD D'ÉTANCHÉITÉ RACCORDE À MOINS DE 2 POUCES DE L'ÉQUIPEMENT. ATTENTION: RISQUE DE CHOC ÉLECTRIQUE - PLUSIEURS SECTIONNEURS PEUVENT ÊTRE NÉCESSAIRES POUR COUPER L'ALIMENTATION DE L'APPAREILLAGE AVANT D'ENTREPRENDRE L'ENTRETIEN.

**ATENÇÃO:** CLASSE DOS PARAFUSOS DA TAMPA AA-70. NÃO ABRA QUANDO HOUVER BASES OU POS EXPLOSIVOS NO AMBIENTE POTENCIAL. PERIGO DE DESCARGA ELÉTRICA. TODAS AS ENTRADAS DEBEM TER A TEMPERATURA EXCEDER 70°C NA ENTRADA OU 80°C NO PONTO DE RAMIFICAÇÃO. USE UM CABO ADEQUADO E PRENSA-CABOS

NEC / CEC CLASS DIV:  
Class I Div 2 Group ABCD T8 Ta -55°C to +60°C

NEC CLASS ZONE:  
Class I Zone 1 AEx db IIC T8 Gb Ta -55°C to +60°C

CEC CLASS ZONE:  
Ex db IIC T8 Gb Ta -55°C to +60°C

European Safety Systems Ltd. Impress House, Mansell Road, London W3 7QH UK www.e2s.com

**STExCP8-PT-S**  
PRODUCT LABEL 1

**STExCP8-PT-S**  
PRODUCT LABEL 2

**STExCP8-PT-S-L**  
Maximum Power: 3.12W  
Input Voltage / Current: 48Vdc max 1A max / 24Vdc 3A max

**CALL POINT**  
STExCP8PT-S\*\*\*\*\*  
IP66/67 / TYPE 4, 4X, 13  
Year / Serial No:  
00/1CP8PTS000014

INDUSTRIAL CONTROL EQUIPMENT FOR USE IN HAZARDOUS LOCATIONS  
ALL ENTRIES MUST BE 1/2" TEMPERATURE EXCEEDS 80°C AT ENTRY OR 80°C AT BRANCHING POINT - USE SUITABLE RATED CABLE AND CABLE GLANDS - SEE INSTRUCTIONS

**WARNING:** USE COVER BOLTS CLASS AA-70. DO NOT OPEN WHEN AN EXPLOSIVE ATMOSPHERE IS PRESENT. POTENTIAL ELECTROSTATIC CHARGING HAZARD - SEE INSTRUCTIONS TO REDUCE THE RISK OF IGNITION OF HAZARDOUS ATMOSPHERES. CONDUIT RUNS MUST HAVE A SEALING FITTING CONNECTED WITHIN 2 INCHES OF CONDUIT  
CAUTION: RISK OF ELECTRIC SHOCK - MORE THAN ONE DISCONNECT MAY BE REQUIRED TO DE-ENERGIZE THE EQUIPMENT BEFORE SERVICING.

**AVERTISSEMENT:** UTILISER COUVRES BOUTONS CLASSE AA-70. NE PAS OUVRIRE UN PRÉSENCE D'ATMOSPHERE EXPLOSIVE. DANGER POTENTIEL CHARGES ÉLECTROSTATIQUES - VOIR LES INSTRUCTIONS POUR RÉDUIRE LE RISQUE D'INFLAMMATION DES ATMOSPHERES DANGEREUSES. LES CONDUITES DE CONDUIT DOIVENT AVOIR UN RACCORD D'ÉTANCHÉITÉ RACCORDE À MOINS DE 2 POUCES DE L'ÉQUIPEMENT. ATTENTION: RISQUE DE CHOC ÉLECTRIQUE - PLUSIEURS SECTIONNEURS PEUVENT ÊTRE NÉCESSAIRES POUR COUPER L'ALIMENTATION DE L'APPAREILLAGE AVANT D'ENTREPRENDRE L'ENTRETIEN.

**ATENÇÃO:** CLASSE DOS PARAFUSOS DA TAMPA AA-70. NÃO ABRA QUANDO HOUVER BASES OU POS EXPLOSIVOS NO AMBIENTE POTENCIAL. PERIGO DE DESCARGA ELÉTRICA. TODAS AS ENTRADAS DEBEM TER A TEMPERATURA EXCEDER 70°C NA ENTRADA OU 80°C NO PONTO DE RAMIFICAÇÃO. USE UM CABO ADEQUADO E PRENSA-CABOS

NEC / CEC CLASS DIV:  
Class I Div 2 Group ABCD T8 Ta -55°C to +60°C

NEC CLASS ZONE:  
Class I Zone 1 AEx db IIC T8 Gb Ta -55°C to +60°C

CEC CLASS ZONE:  
Ex db IIC T8 Gb Ta -55°C to +60°C

European Safety Systems Ltd. Impress House, Mansell Road, London W3 7QH UK www.e2s.com

**STExCP8-PT-S-L**  
PRODUCT LABEL 1

**STExCP8-PT-S-L**  
PRODUCT LABEL 2

**STExCP8-PT-S-C**  
Maximum Power: 3.12W  
Input Voltage / Current: 48Vdc max 20mA max

**CALL POINT**  
STExCP8PT-S\*\*\*\*\*  
IP66/67 / TYPE 4, 4X, 13  
Year / Serial No:  
00/1CP8PTS000017

INDUSTRIAL CONTROL EQUIPMENT FOR USE IN HAZARDOUS LOCATIONS  
ALL ENTRIES MUST BE 1/2" TEMPERATURE EXCEEDS 80°C AT ENTRY OR 80°C AT BRANCHING POINT - USE SUITABLE RATED CABLE AND CABLE GLANDS - SEE INSTRUCTIONS

**WARNING:** USE COVER BOLTS CLASS AA-70. DO NOT OPEN WHEN AN EXPLOSIVE ATMOSPHERE IS PRESENT. POTENTIAL ELECTROSTATIC CHARGING HAZARD - SEE INSTRUCTIONS TO REDUCE THE RISK OF IGNITION OF HAZARDOUS ATMOSPHERES. CONDUIT RUNS MUST HAVE A SEALING FITTING CONNECTED WITHIN 2 INCHES OF CONDUIT  
CAUTION: RISK OF ELECTRIC SHOCK - MORE THAN ONE DISCONNECT MAY BE REQUIRED TO DE-ENERGIZE THE EQUIPMENT BEFORE SERVICING.

**AVERTISSEMENT:** UTILISER COUVRES BOUTONS CLASSE AA-70. NE PAS OUVRIRE UN PRÉSENCE D'ATMOSPHERE EXPLOSIVE. DANGER POTENTIEL CHARGES ÉLECTROSTATIQUES - VOIR LES INSTRUCTIONS POUR RÉDUIRE LE RISQUE D'INFLAMMATION DES ATMOSPHERES DANGEREUSES. LES CONDUITES DE CONDUIT DOIVENT AVOIR UN RACCORD D'ÉTANCHÉITÉ RACCORDE À MOINS DE 2 POUCES DE L'ÉQUIPEMENT. ATTENTION: RISQUE DE CHOC ÉLECTRIQUE - PLUSIEURS SECTIONNEURS PEUVENT ÊTRE NÉCESSAIRES POUR COUPER L'ALIMENTATION DE L'APPAREILLAGE AVANT D'ENTREPRENDRE L'ENTRETIEN.

**ATENÇÃO:** CLASSE DOS PARAFUSOS DA TAMPA AA-70. NÃO ABRA QUANDO HOUVER BASES OU POS EXPLOSIVOS NO AMBIENTE POTENCIAL. PERIGO DE DESCARGA ELÉTRICA. TODAS AS ENTRADAS DEBEM TER A TEMPERATURA EXCEDER 70°C NA ENTRADA OU 80°C NO PONTO DE RAMIFICAÇÃO. USE UM CABO ADEQUADO E PRENSA-CABOS

NEC / CEC CLASS DIV:  
Class I Div 2 Group ABCD T8 Ta -55°C to +60°C

NEC CLASS ZONE:  
Class I Zone 1 AEx db IIC T8 Gb Ta -55°C to +60°C

CEC CLASS ZONE:  
Ex db IIC T8 Gb Ta -55°C to +60°C

European Safety Systems Ltd. Impress House, Mansell Road, London W3 7QH UK www.e2s.com

**STExCP8-PT-S-C**  
PRODUCT LABEL 1

**STExCP8-PT-S-C**  
PRODUCT LABEL 2

**STExCP8-PT-D**  
Maximum Power: 6.244W  
Input Voltage / Current: 48Vdc max 1A max / 24Vdc 3A max  
Input Voltage / Current: 250Vac 50/60Hz max 3.33A max

**CALL POINT**  
STExCP8PTD\*\*\*\*\*  
IP66/67 / TYPE 4, 4X, 13  
Year / Serial No:  
00/1CP8PTD000011

INDUSTRIAL CONTROL EQUIPMENT FOR USE IN HAZARDOUS LOCATIONS  
ALL ENTRIES MUST BE 1/2" TEMPERATURE EXCEEDS 80°C AT ENTRY OR 80°C AT BRANCHING POINT - USE SUITABLE RATED CABLE AND CABLE GLANDS - SEE INSTRUCTIONS

**WARNING:** USE COVER BOLTS CLASS AA-70. DO NOT OPEN WHEN AN EXPLOSIVE ATMOSPHERE IS PRESENT. POTENTIAL ELECTROSTATIC CHARGING HAZARD - SEE INSTRUCTIONS TO REDUCE THE RISK OF IGNITION OF HAZARDOUS ATMOSPHERES. CONDUIT RUNS MUST HAVE A SEALING FITTING CONNECTED WITHIN 2 INCHES OF CONDUIT  
CAUTION: RISK OF ELECTRIC SHOCK - MORE THAN ONE DISCONNECT MAY BE REQUIRED TO DE-ENERGIZE THE EQUIPMENT BEFORE SERVICING.

**AVERTISSEMENT:** UTILISER COUVRES BOUTONS CLASSE AA-70. NE PAS OUVRIRE UN PRÉSENCE D'ATMOSPHERE EXPLOSIVE. DANGER POTENTIEL CHARGES ÉLECTROSTATIQUES - VOIR LES INSTRUCTIONS POUR RÉDUIRE LE RISQUE D'INFLAMMATION DES ATMOSPHERES DANGEREUSES. LES CONDUITES DE CONDUIT DOIVENT AVOIR UN RACCORD D'ÉTANCHÉITÉ RACCORDE À MOINS DE 2 POUCES DE L'ÉQUIPEMENT. ATTENTION: RISQUE DE CHOC ÉLECTRIQUE - PLUSIEURS SECTIONNEURS PEUVENT ÊTRE NÉCESSAIRES POUR COUPER L'ALIMENTATION DE L'APPAREILLAGE AVANT D'ENTREPRENDRE L'ENTRETIEN.

**ATENÇÃO:** CLASSE DOS PARAFUSOS DA TAMPA AA-70. NÃO ABRA QUANDO HOUVER BASES OU POS EXPLOSIVOS NO AMBIENTE POTENCIAL. PERIGO DE DESCARGA ELÉTRICA. TODAS AS ENTRADAS DEBEM TER A TEMPERATURA EXCEDER 70°C NA ENTRADA OU 80°C NO PONTO DE RAMIFICAÇÃO. USE UM CABO ADEQUADO E PRENSA-CABOS

NEC / CEC CLASS DIV:  
Class I Div 2 Group ABCD T8 Ta -55°C to +60°C

NEC CLASS ZONE:  
Class I Zone 1 AEx db IIC T8 Gb Ta -55°C to +60°C

CEC CLASS ZONE:  
Ex db IIC T8 Gb Ta -55°C to +60°C

European Safety Systems Ltd. Impress House, Mansell Road, London W3 7QH UK www.e2s.com

**STExCP8-PT-D**  
PRODUCT LABEL 1

**STExCP8-PT-D**  
PRODUCT LABEL 2

**STExCP8-PT-D-L**  
Maximum Power: 6.244W  
Input Voltage / Current: 48Vdc max 1A max / 24Vdc 3A max

**CALL POINT**  
STExCP8PTD\*\*\*\*\*  
IP66/67 / TYPE 4, 4X, 13  
Year / Serial No:  
00/1CP8PTD000020

INDUSTRIAL CONTROL EQUIPMENT FOR USE IN HAZARDOUS LOCATIONS  
ALL ENTRIES MUST BE 1/2" TEMPERATURE EXCEEDS 80°C AT ENTRY OR 80°C AT BRANCHING POINT - USE SUITABLE RATED CABLE AND CABLE GLANDS - SEE INSTRUCTIONS

**WARNING:** USE COVER BOLTS CLASS AA-70. DO NOT OPEN WHEN AN EXPLOSIVE ATMOSPHERE IS PRESENT. POTENTIAL ELECTROSTATIC CHARGING HAZARD - SEE INSTRUCTIONS TO REDUCE THE RISK OF IGNITION OF HAZARDOUS ATMOSPHERES. CONDUIT RUNS MUST HAVE A SEALING FITTING CONNECTED WITHIN 2 INCHES OF CONDUIT  
CAUTION: RISK OF ELECTRIC SHOCK - MORE THAN ONE DISCONNECT MAY BE REQUIRED TO DE-ENERGIZE THE EQUIPMENT BEFORE SERVICING.

**AVERTISSEMENT:** UTILISER COUVRES BOUTONS CLASSE AA-70. NE PAS OUVRIRE UN PRÉSENCE D'ATMOSPHERE EXPLOSIVE. DANGER POTENTIEL CHARGES ÉLECTROSTATIQUES - VOIR LES INSTRUCTIONS POUR RÉDUIRE LE RISQUE D'INFLAMMATION DES ATMOSPHERES DANGEREUSES. LES CONDUITES DE CONDUIT DOIVENT AVOIR UN RACCORD D'ÉTANCHÉITÉ RACCORDE À MOINS DE 2 POUCES DE L'ÉQUIPEMENT. ATTENTION: RISQUE DE CHOC ÉLECTRIQUE - PLUSIEURS SECTIONNEURS PEUVENT ÊTRE NÉCESSAIRES POUR COUPER L'ALIMENTATION DE L'APPAREILLAGE AVANT D'ENTREPRENDRE L'ENTRETIEN.

**ATENÇÃO:** CLASSE DOS PARAFUSOS DA TAMPA AA-70. NÃO ABRA QUANDO HOUVER BASES OU POS EXPLOSIVOS NO AMBIENTE POTENCIAL. PERIGO DE DESCARGA ELÉTRICA. TODAS AS ENTRADAS DEBEM TER A TEMPERATURA EXCEDER 70°C NA ENTRADA OU 80°C NO PONTO DE RAMIFICAÇÃO. USE UM CABO ADEQUADO E PRENSA-CABOS

NEC / CEC CLASS DIV:  
Class I Div 2 Group ABCD T8 Ta -55°C to +60°C

NEC CLASS ZONE:  
Class I Zone 1 AEx db IIC T8 Gb Ta -55°C to +60°C

CEC CLASS ZONE:  
Ex db IIC T8 Gb Ta -55°C to +60°C

European Safety Systems Ltd. Impress House, Mansell Road, London W3 7QH UK www.e2s.com

**STExCP8-PT-D-L**  
PRODUCT LABEL 1

**STExCP8-PT-D-L**  
PRODUCT LABEL 2

**STExCP8-PT-D-C**  
Maximum Power: 6.244W  
Input Voltage / Current: 48Vdc max 20mA max

**CALL POINT**  
STExCP8PTD\*\*\*\*\*  
IP66/67 / TYPE 4, 4X, 13  
Year / Serial No:  
00/1CP8PTD000023

INDUSTRIAL CONTROL EQUIPMENT FOR USE IN HAZARDOUS LOCATIONS  
ALL ENTRIES MUST BE 1/2" TEMPERATURE EXCEEDS 80°C AT ENTRY OR 80°C AT BRANCHING POINT - USE SUITABLE RATED CABLE AND CABLE GLANDS - SEE INSTRUCTIONS

**WARNING:** USE COVER BOLTS CLASS AA-70. DO NOT OPEN WHEN AN EXPLOSIVE ATMOSPHERE IS PRESENT. POTENTIAL ELECTROSTATIC CHARGING HAZARD - SEE INSTRUCTIONS TO REDUCE THE RISK OF IGNITION OF HAZARDOUS ATMOSPHERES. CONDUIT RUNS MUST HAVE A SEALING FITTING CONNECTED WITHIN 2 INCHES OF CONDUIT  
CAUTION: RISK OF ELECTRIC SHOCK - MORE THAN ONE DISCONNECT MAY BE REQUIRED TO DE-ENERGIZE THE EQUIPMENT BEFORE SERVICING.

**AVERTISSEMENT:** UTILISER COUVRES BOUTONS CLASSE AA-70. NE PAS OUVRIRE UN PRÉSENCE D'ATMOSPHERE EXPLOSIVE. DANGER POTENTIEL CHARGES ÉLECTROSTATIQUES - VOIR LES INSTRUCTIONS POUR RÉDUIRE LE RISQUE D'INFLAMMATION DES ATMOSPHERES DANGEREUSES. LES CONDUITES DE CONDUIT DOIVENT AVOIR UN RACCORD D'ÉTANCHÉITÉ RACCORDE À MOINS DE 2 POUCES DE L'ÉQUIPEMENT. ATTENTION: RISQUE DE CHOC ÉLECTRIQUE - PLUSIEURS SECTIONNEURS PEUVENT ÊTRE NÉCESSAIRES POUR COUPER L'ALIMENTATION DE L'APPAREILLAGE AVANT D'ENTREPRENDRE L'ENTRETIEN.

**ATENÇÃO:** CLASSE DOS PARAFUSOS DA TAMPA AA-70. NÃO ABRA QUANDO HOUVER BASES OU POS EXPLOSIVOS NO AMBIENTE POTENCIAL. PERIGO DE DESCARGA ELÉTRICA. TODAS AS ENTRADAS DEBEM TER A TEMPERATURA EXCEDER 70°C NA ENTRADA OU 80°C NO PONTO DE RAMIFICAÇÃO. USE UM CABO ADEQUADO E PRENSA-CABOS

NEC / CEC CLASS DIV:  
Class I Div 2 Group ABCD T8 Ta -55°C to +60°C

NEC CLASS ZONE:  
Class I Zone 1 AEx db IIC T8 Gb Ta -55°C to +60°C

CEC CLASS ZONE:  
Ex db IIC T8 Gb Ta -55°C to +60°C

European Safety Systems Ltd. Impress House, Mansell Road, London W3 7QH UK www.e2s.com

**STExCP8-PT-D-C**  
PRODUCT LABEL 1

**STExCP8-PT-D-C**  
PRODUCT LABEL 2

DRAWING TO BS8888:2000 GEOMETRIC TOLERANCES TO ISO1101:1983 LINEAR DIMENSIONAL TOLS +/-0.35mm ANGULAR DIMENSIONAL TOLS +/-2 deg	DRAWN <b>D.HOWGILL</b>	DATE <b>19-06-20</b>
STANDARDS <b>STEx CP8 CALL POINTS</b>	CHECKED <b>R.N.POTTS</b>	DATE <b>19-06-20</b>
	APPROVED <b>R.N.POTTS</b>	DATE <b>19-06-20</b>

**SURFACE FINISH**

**WEIGHT (Kg)**

**MATERIAL**

**ALTERNATIVE MATERIAL**

THIS DRAWING AND ANY INFORMATION OR DESCRIPTIVE MATTER THEREIN IS COMMUNICATED IN CONFIDENCE AND IS THE COPYRIGHT PROPERTY OF EUROPEAN SAFETY SYSTEMS LTD. NEITHER THE WHOLE OR ANY EXTRACT MAY BE DISCLOSED, LOANED, COPIED OR USED FOR MANUFACTURING OR TENDERING PURPOSES WITHOUT THEIR WRITTEN CONSENT.

**EUROPEAN SAFETY SYSTEMS LTD.**  
AS PER LATEST DATE OF ISSUE SHOWN ABOVE

**ALL DIMENSIONS IN MM**

IF IN DOUBT, ASK - DO NOT SCALE

**TITLE** STEx CP8 PT / PB / PM PUSH BUTTON  
**CALL POINT PRODUCT LABEL**

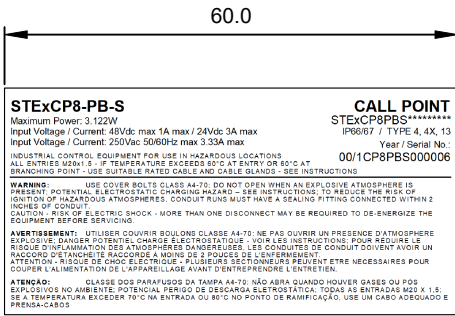
**SCALE** 1:1

**SHEET** 1 of 3

**DRAWING NUMBER** D204-09-201

**EUROPEAN SAFETY SYSTEMS LTD**  
IMPRESS HOUSE  
MANSELL ROAD  
ACTON  
LONDON W3 7QH  
WWW.E2S.COM

A	2	3	4	5	6	7	8	9	10
B	C	D	E	F	G				



**STExCP8-PB-S**  
PRODUCT LABEL 1

DEMKO 15ATEX 1589X  
 IECEx LUD 15.0018X  
 UL14UKEX2133X  
 N°: IEX 20.0051X

ATEX / IECEx / UKEx / INMETRO:  
 Ex db IIC T8 Gb Ta -55°C to +70°C

NEC / CEC CLASS DIV:  
 Class I Div 2 Group ABCD T8 Ta -55°C to +60°C

NEC CLASS ZONE:  
 Class I Zone 1 AEx db IIC T8 Gb Ta -55°C to +60°C

CEC CLASS ZONE:  
 Ex db IIC T8 Gb Ta -55°C to +60°C

Impress House, Mansell Road, London W3 7QH UK  
 www.e2s.com

**STExCP8-PB-S**  
PRODUCT LABEL 2

DEMKO 15ATEX 1589X  
 IECEx LUD 15.0018X  
 UL14UKEX2133X  
 N°: IEX 20.0051X

ATEX / IECEx / UKEx / INMETRO:  
 Ex db IIC T8 Gb Ta -55°C to +70°C

NEC / CEC CLASS DIV:  
 Class I Div 2 Group ABCD T8 Ta -55°C to +60°C

NEC CLASS ZONE:  
 Class I Zone 1 AEx db IIC T8 Gb Ta -55°C to +60°C

CEC CLASS ZONE:  
 Ex db IIC T8 Gb Ta -55°C to +60°C

Impress House, Mansell Road, London W3 7QH UK  
 www.e2s.com

**STExCP8-PB-S-L**  
PRODUCT LABEL 1

DEMKO 15ATEX 1589X  
 IECEx LUD 15.0018X  
 UL14UKEX2133X  
 N°: IEX 20.0051X

ATEX / IECEx / UKEx / INMETRO:  
 Ex db IIC T8 Gb Ta -55°C to +70°C

NEC / CEC CLASS DIV:  
 Class I Div 2 Group ABCD T8 Ta -55°C to +60°C

NEC CLASS ZONE:  
 Class I Zone 1 AEx db IIC T8 Gb Ta -55°C to +60°C

CEC CLASS ZONE:  
 Ex db IIC T8 Gb Ta -55°C to +60°C

Impress House, Mansell Road, London W3 7QH UK  
 www.e2s.com

**STExCP8-PB-S-L**  
PRODUCT LABEL 2

ISSUE	MOD No.	INITIAL/DATE
2		UKCA ADDED DAH 25-10-2022
3		Added LED -L & -C units. Added Sheets 2-3. MA 29-08-2023
4		NEC / CEC RATINGS ADDED. UPDATED LAYOUT. MA 16-01-2024

DEMKO 15ATEX 1589X  
 IECEx LUD 15.0018X  
 UL14UKEX2133X  
 N°: IEX 20.0051X

ATEX / IECEx / UKEx / INMETRO:  
 Ex db IIC T8 Gb Ta -55°C to +70°C

NEC / CEC CLASS DIV:  
 Class I Div 2 Group ABCD T8 Ta -55°C to +60°C

NEC CLASS ZONE:  
 Class I Zone 1 AEx db IIC T8 Gb Ta -55°C to +60°C

CEC CLASS ZONE:  
 Ex db IIC T8 Gb Ta -55°C to +60°C

Impress House, Mansell Road, London W3 7QH UK  
 www.e2s.com

**STExCP8-PB-S-C**  
PRODUCT LABEL 1

DEMKO 15ATEX 1589X  
 IECEx LUD 15.0018X  
 UL14UKEX2133X  
 N°: IEX 20.0051X

ATEX / IECEx / UKEx / INMETRO:  
 Ex db IIC T8 Gb Ta -55°C to +70°C

NEC / CEC CLASS DIV:  
 Class I Div 2 Group ABCD T8 Ta -55°C to +60°C

NEC CLASS ZONE:  
 Class I Zone 1 AEx db IIC T8 Gb Ta -55°C to +60°C

CEC CLASS ZONE:  
 Ex db IIC T8 Gb Ta -55°C to +60°C

Impress House, Mansell Road, London W3 7QH UK  
 www.e2s.com

**STExCP8-PB-S-C**  
PRODUCT LABEL 2

DEMKO 15ATEX 1589X  
 IECEx LUD 15.0018X  
 UL14UKEX2133X  
 N°: IEX 20.0051X

ATEX / IECEx / UKEx / INMETRO:  
 Ex db IIC T8 Gb Ta -55°C to +70°C

NEC / CEC CLASS DIV:  
 Class I Div 2 Group ABCD T8 Ta -55°C to +60°C

NEC CLASS ZONE:  
 Class I Zone 1 AEx db IIC T8 Gb Ta -55°C to +60°C

CEC CLASS ZONE:  
 Ex db IIC T8 Gb Ta -55°C to +60°C

Impress House, Mansell Road, London W3 7QH UK  
 www.e2s.com

**STExCP8-PB-D**  
PRODUCT LABEL 1

DEMKO 15ATEX 1589X  
 IECEx LUD 15.0018X  
 UL14UKEX2133X  
 N°: IEX 20.0051X

ATEX / IECEx / UKEx / INMETRO:  
 Ex db IIC T8 Gb Ta -55°C to +70°C

NEC / CEC CLASS DIV:  
 Class I Div 2 Group ABCD T8 Ta -55°C to +60°C

NEC CLASS ZONE:  
 Class I Zone 1 AEx db IIC T8 Gb Ta -55°C to +60°C

CEC CLASS ZONE:  
 Ex db IIC T8 Gb Ta -55°C to +60°C

Impress House, Mansell Road, London W3 7QH UK  
 www.e2s.com

**STExCP8-PB-D**  
PRODUCT LABEL 2

DEMKO 15ATEX 1589X  
 IECEx LUD 15.0018X  
 UL14UKEX2133X  
 N°: IEX 20.0051X

ATEX / IECEx / UKEx / INMETRO:  
 Ex db IIC T8 Gb Ta -55°C to +70°C

NEC / CEC CLASS DIV:  
 Class I Div 2 Group ABCD T8 Ta -55°C to +60°C

NEC CLASS ZONE:  
 Class I Zone 1 AEx db IIC T8 Gb Ta -55°C to +60°C

CEC CLASS ZONE:  
 Ex db IIC T8 Gb Ta -55°C to +60°C

Impress House, Mansell Road, London W3 7QH UK  
 www.e2s.com

**STExCP8-PB-D-L**  
PRODUCT LABEL 1

DEMKO 15ATEX 1589X  
 IECEx LUD 15.0018X  
 UL14UKEX2133X  
 N°: IEX 20.0051X

ATEX / IECEx / UKEx / INMETRO:  
 Ex db IIC T8 Gb Ta -55°C to +70°C

NEC / CEC CLASS DIV:  
 Class I Div 2 Group ABCD T8 Ta -55°C to +60°C

NEC CLASS ZONE:  
 Class I Zone 1 AEx db IIC T8 Gb Ta -55°C to +60°C

CEC CLASS ZONE:  
 Ex db IIC T8 Gb Ta -55°C to +60°C

Impress House, Mansell Road, London W3 7QH UK  
 www.e2s.com

**STExCP8-PB-D-L**  
PRODUCT LABEL 2

DEMKO 15ATEX 1589X  
 IECEx LUD 15.0018X  
 UL14UKEX2133X  
 N°: IEX 20.0051X

ATEX / IECEx / UKEx / INMETRO:  
 Ex db IIC T8 Gb Ta -55°C to +70°C

NEC / CEC CLASS DIV:  
 Class I Div 2 Group ABCD T8 Ta -55°C to +60°C

NEC CLASS ZONE:  
 Class I Zone 1 AEx db IIC T8 Gb Ta -55°C to +60°C

CEC CLASS ZONE:  
 Ex db IIC T8 Gb Ta -55°C to +60°C

Impress House, Mansell Road, London W3 7QH UK  
 www.e2s.com

**STExCP8-PB-D-C**  
PRODUCT LABEL 1

DEMKO 15ATEX 1589X  
 IECEx LUD 15.0018X  
 UL14UKEX2133X  
 N°: IEX 20.0051X

ATEX / IECEx / UKEx / INMETRO:  
 Ex db IIC T8 Gb Ta -55°C to +70°C

NEC / CEC CLASS DIV:  
 Class I Div 2 Group ABCD T8 Ta -55°C to +60°C

NEC CLASS ZONE:  
 Class I Zone 1 AEx db IIC T8 Gb Ta -55°C to +60°C

CEC CLASS ZONE:  
 Ex db IIC T8 Gb Ta -55°C to +60°C

Impress House, Mansell Road, London W3 7QH UK  
 www.e2s.com

**STExCP8-PB-D-C**  
PRODUCT LABEL 2

DRAWING TO BS8888:2000  
 GEOMETRIC TOLERANCES TO ISO1101:1983  
 LINEAR DIMENSIONAL TOLS +/-0.35mm  
 ANGULAR DIMENSIONAL TOLS +/-2 deg

STANDARDS  
**STEx CP8**  
**CALL POINTS**

DRAWN	D.HOWGILL	DATE	19-06-20
CHECKED	R.N.POTTS	DATE	19-06-20
APPROVED	R.N.POTTS	DATE	19-06-20

SURFACE FINISH	WEIGHT (Kg)
MATERIAL	
ALTERNATIVE MATERIAL	

THIS DRAWING AND ANY INFORMATION OR DESCRIPTIVE MATTER  
 THEREIN IS COMMUNICATED IN CONFIDENCE AND IS THE  
 COPYRIGHT PROPERTY OF EUROPEAN SAFETY SYSTEMS LTD.  
 NEITHER THE WHOLE OR ANY EXTRACT MAY BE DISCLOSED,  
 LOANED, COPIED OR USED FOR MANUFACTURING OR TENDERING  
 PURPOSES WITHOUT THEIR WRITTEN CONSENT.

EUROPEAN SAFETY SYSTEMS LTD.  
 AS PER LATEST DATE OF ISSUE SHOWN ABOVE

EUROPEAN SAFETY SYSTEMS LTD  
 IMPRESS HOUSE  
 MANSELL ROAD  
 ACTON  
 LONDON W3 7QH  
 WWW.E2S.COM

ALL DIMENSIONS IN MM				A3
IF IN DOUBT, ASK - DO NOT SCALE				
TITLE <b>STEx CP8 PT / PB / PM PUSH BUTTON</b> <b>CALL POINT PRODUCT LABEL</b>				
SCALE	SHEET	DRAWING NUMBER		
1:1	2 of 3	<b>D204-09-201</b>		

	1	2	3	4	5	6	7	8	9	10													
A									<table border="1"> <tr> <th>ISSUE</th> <th>MOD No.</th> <th>INITIAL/DATE</th> </tr> <tr> <td>2</td> <td></td> <td>UKCA ADDED DAH 25-10-2022</td> </tr> <tr> <td>3</td> <td></td> <td>Added LED -L &amp; -C units. Added Sheets 2-3. MA 29-08-2023</td> </tr> <tr> <td>4</td> <td></td> <td>NEC / CEC RATINGS ADDED. UPDATED LAYOUT. MA 16-01-2024</td> </tr> </table>	ISSUE	MOD No.	INITIAL/DATE	2		UKCA ADDED DAH 25-10-2022	3		Added LED -L & -C units. Added Sheets 2-3. MA 29-08-2023	4		NEC / CEC RATINGS ADDED. UPDATED LAYOUT. MA 16-01-2024		
	ISSUE	MOD No.	INITIAL/DATE																				
	2		UKCA ADDED DAH 25-10-2022																				
3		Added LED -L & -C units. Added Sheets 2-3. MA 29-08-2023																					
4		NEC / CEC RATINGS ADDED. UPDATED LAYOUT. MA 16-01-2024																					
B									<table border="1"> <tr> <td> <b>STExCP8-PM-S</b>            Maximum Power: 3.122W            Input Voltage / Current: 48Vdc max 1A max / 24Vdc 3A max            Input Voltage / Current: 250Vdc 50/60Hz max 3.33A max            INDUSTRIAL CONTROL EQUIPMENT FOR USE IN HAZARDOUS LOCATIONS            ALL ENTRIES MUST BE OF TEMPERATURE EXCEEDS 80°C AT ENTRY OR 80°C AT BRANCHING POINT - USE SUITABLE RATED CABLE AND CABLE GLANDS - SEE INSTRUCTIONS  <b>WARNING:</b> USE COVER BOLTS CLASS AA-70. DO NOT OPEN WHEN AN EXPLOSIVE ATMOSPHERE IS PRESENT - POTENTIAL ELECTROSTATIC CHARGING HAZARD - SEE INSTRUCTIONS TO REDUCE THE RISK OF IONIZATION OF HAZARDOUS ATMOSPHERES. CONDUIT RUNS MUST HAVE A SEALING FITTING CONNECTED WITHIN 2 INCHES OF CONDUIT  <b>CAUTION:</b> RISK OF ELECTRIC SHOCK - MORE THAN ONE DISCONNECT MAY BE REQUIRED TO DE-ENERGIZE THE EQUIPMENT BEFORE SERVICING.  <b>AVERTISSEMENT:</b> UTILISER COUVRIRES BLOUONS CLASSE AA-70. NE PAS OUVRIRE EN PRESENCE D'ATMOSPHERE EXPLOSIVE. DANGER POTENTIEL CHARGE ELECTROSTATIQUE - VOIR LES INSTRUCTIONS POUR REDUIRE LE RISQUE D'INFLAMMATION DES ATMOSPHERES DANGEREUSES. LES CONDUITES DE CONDUIT DOIVENT AVOIR UN RACCORD D'ETANCHEITE RACCORDE A MOINS DE 2 POUCES DE L'ENTREPRISEMENT  <b>ATTENTION:</b> RISQUE DE CHOC ELECTRIQUE - PLUSIEURS SECTIONNEURS PEUVENT ETRE NECESSAIRES POUR COUPER L'ALIMENTATION DE L'APPAREILLAGE AVANT D'ENTREPRENDRE L'ENTRETIEN.  <b>ATENCAO:</b> CLASSE DOS PARAFUSOS DA TAMPAA AA-70. NAO ABRA QUANDO HOUVER BASES OU POS ESTABELECIDOS NO AMBIENTE POTENCIAL PERIGO DE DESCARGA ELETRICITATIVA. TODAS AS ENTRADAS DEBEM SER A TEMPERATURA EXCEDER 70°C NA ENTRADA OU 80°C NO PONTO DE RAMIFICACAO. USE UM CABO ADEQUADO E PRENSA-CABOS         </td> <td> <b>CALL POINT</b>            STEXC8PMS*****            IP66/67 / TYPE 4, 4X, 13            Year / Serial No.:            00/1CP8PMS000007         </td> </tr> <tr> <td> <b>STExCP8-PM-S</b>  <b>PRODUCT LABEL 1</b> </td> <td> </td> </tr> </table>	<b>STExCP8-PM-S</b> Maximum Power: 3.122W Input Voltage / Current: 48Vdc max 1A max / 24Vdc 3A max Input Voltage / Current: 250Vdc 50/60Hz max 3.33A max INDUSTRIAL CONTROL EQUIPMENT FOR USE IN HAZARDOUS LOCATIONS ALL ENTRIES MUST BE OF TEMPERATURE EXCEEDS 80°C AT ENTRY OR 80°C AT BRANCHING POINT - USE SUITABLE RATED CABLE AND CABLE GLANDS - SEE INSTRUCTIONS <b>WARNING:</b> USE COVER BOLTS CLASS AA-70. DO NOT OPEN WHEN AN EXPLOSIVE ATMOSPHERE IS PRESENT - POTENTIAL ELECTROSTATIC CHARGING HAZARD - SEE INSTRUCTIONS TO REDUCE THE RISK OF IONIZATION OF HAZARDOUS ATMOSPHERES. CONDUIT RUNS MUST HAVE A SEALING FITTING CONNECTED WITHIN 2 INCHES OF CONDUIT <b>CAUTION:</b> RISK OF ELECTRIC SHOCK - MORE THAN ONE DISCONNECT MAY BE REQUIRED TO DE-ENERGIZE THE EQUIPMENT BEFORE SERVICING. <b>AVERTISSEMENT:</b> UTILISER COUVRIRES BLOUONS CLASSE AA-70. NE PAS OUVRIRE EN PRESENCE D'ATMOSPHERE EXPLOSIVE. DANGER POTENTIEL CHARGE ELECTROSTATIQUE - VOIR LES INSTRUCTIONS POUR REDUIRE LE RISQUE D'INFLAMMATION DES ATMOSPHERES DANGEREUSES. LES CONDUITES DE CONDUIT DOIVENT AVOIR UN RACCORD D'ETANCHEITE RACCORDE A MOINS DE 2 POUCES DE L'ENTREPRISEMENT <b>ATTENTION:</b> RISQUE DE CHOC ELECTRIQUE - PLUSIEURS SECTIONNEURS PEUVENT ETRE NECESSAIRES POUR COUPER L'ALIMENTATION DE L'APPAREILLAGE AVANT D'ENTREPRENDRE L'ENTRETIEN. <b>ATENCAO:</b> CLASSE DOS PARAFUSOS DA TAMPAA AA-70. NAO ABRA QUANDO HOUVER BASES OU POS ESTABELECIDOS NO AMBIENTE POTENCIAL PERIGO DE DESCARGA ELETRICITATIVA. TODAS AS ENTRADAS DEBEM SER A TEMPERATURA EXCEDER 70°C NA ENTRADA OU 80°C NO PONTO DE RAMIFICACAO. USE UM CABO ADEQUADO E PRENSA-CABOS	<b>CALL POINT</b> STEXC8PMS***** IP66/67 / TYPE 4, 4X, 13 Year / Serial No.: 00/1CP8PMS000007	<b>STExCP8-PM-S</b> <b>PRODUCT LABEL 1</b>											
	<b>STExCP8-PM-S</b> Maximum Power: 3.122W Input Voltage / Current: 48Vdc max 1A max / 24Vdc 3A max Input Voltage / Current: 250Vdc 50/60Hz max 3.33A max INDUSTRIAL CONTROL EQUIPMENT FOR USE IN HAZARDOUS LOCATIONS ALL ENTRIES MUST BE OF TEMPERATURE EXCEEDS 80°C AT ENTRY OR 80°C AT BRANCHING POINT - USE SUITABLE RATED CABLE AND CABLE GLANDS - SEE INSTRUCTIONS <b>WARNING:</b> USE COVER BOLTS CLASS AA-70. DO NOT OPEN WHEN AN EXPLOSIVE ATMOSPHERE IS PRESENT - POTENTIAL ELECTROSTATIC CHARGING HAZARD - SEE INSTRUCTIONS TO REDUCE THE RISK OF IONIZATION OF HAZARDOUS ATMOSPHERES. CONDUIT RUNS MUST HAVE A SEALING FITTING CONNECTED WITHIN 2 INCHES OF CONDUIT <b>CAUTION:</b> RISK OF ELECTRIC SHOCK - MORE THAN ONE DISCONNECT MAY BE REQUIRED TO DE-ENERGIZE THE EQUIPMENT BEFORE SERVICING. <b>AVERTISSEMENT:</b> UTILISER COUVRIRES BLOUONS CLASSE AA-70. NE PAS OUVRIRE EN PRESENCE D'ATMOSPHERE EXPLOSIVE. DANGER POTENTIEL CHARGE ELECTROSTATIQUE - VOIR LES INSTRUCTIONS POUR REDUIRE LE RISQUE D'INFLAMMATION DES ATMOSPHERES DANGEREUSES. LES CONDUITES DE CONDUIT DOIVENT AVOIR UN RACCORD D'ETANCHEITE RACCORDE A MOINS DE 2 POUCES DE L'ENTREPRISEMENT <b>ATTENTION:</b> RISQUE DE CHOC ELECTRIQUE - PLUSIEURS SECTIONNEURS PEUVENT ETRE NECESSAIRES POUR COUPER L'ALIMENTATION DE L'APPAREILLAGE AVANT D'ENTREPRENDRE L'ENTRETIEN. <b>ATENCAO:</b> CLASSE DOS PARAFUSOS DA TAMPAA AA-70. NAO ABRA QUANDO HOUVER BASES OU POS ESTABELECIDOS NO AMBIENTE POTENCIAL PERIGO DE DESCARGA ELETRICITATIVA. TODAS AS ENTRADAS DEBEM SER A TEMPERATURA EXCEDER 70°C NA ENTRADA OU 80°C NO PONTO DE RAMIFICACAO. USE UM CABO ADEQUADO E PRENSA-CABOS	<b>CALL POINT</b> STEXC8PMS***** IP66/67 / TYPE 4, 4X, 13 Year / Serial No.: 00/1CP8PMS000007																					
<b>STExCP8-PM-S</b> <b>PRODUCT LABEL 1</b>																							
C									<table border="1"> <tr> <td> <b>STExCP8-PM-S-L</b>            Maximum Power: 3.122W            Input Voltage / Current: 48Vdc max 1A max / 24Vdc 3A max            INDUSTRIAL CONTROL EQUIPMENT FOR USE IN HAZARDOUS LOCATIONS            ALL ENTRIES MUST BE OF TEMPERATURE EXCEEDS 80°C AT ENTRY OR 80°C AT BRANCHING POINT - USE SUITABLE RATED CABLE AND CABLE GLANDS - SEE INSTRUCTIONS  <b>WARNING:</b> USE COVER BOLTS CLASS AA-70. DO NOT OPEN WHEN AN EXPLOSIVE ATMOSPHERE IS PRESENT - POTENTIAL ELECTROSTATIC CHARGING HAZARD - SEE INSTRUCTIONS TO REDUCE THE RISK OF IONIZATION OF HAZARDOUS ATMOSPHERES. CONDUIT RUNS MUST HAVE A SEALING FITTING CONNECTED WITHIN 2 INCHES OF CONDUIT  <b>CAUTION:</b> RISK OF ELECTRIC SHOCK - MORE THAN ONE DISCONNECT MAY BE REQUIRED TO DE-ENERGIZE THE EQUIPMENT BEFORE SERVICING.  <b>AVERTISSEMENT:</b> UTILISER COUVRIRES BLOUONS CLASSE AA-70. NE PAS OUVRIRE EN PRESENCE D'ATMOSPHERE EXPLOSIVE. DANGER POTENTIEL CHARGE ELECTROSTATIQUE - VOIR LES INSTRUCTIONS POUR REDUIRE LE RISQUE D'INFLAMMATION DES ATMOSPHERES DANGEREUSES. LES CONDUITES DE CONDUIT DOIVENT AVOIR UN RACCORD D'ETANCHEITE RACCORDE A MOINS DE 2 POUCES DE L'ENTREPRISEMENT  <b>ATTENTION:</b> RISQUE DE CHOC ELECTRIQUE - PLUSIEURS SECTIONNEURS PEUVENT ETRE NECESSAIRES POUR COUPER L'ALIMENTATION DE L'APPAREILLAGE AVANT D'ENTREPRENDRE L'ENTRETIEN.  <b>ATENCAO:</b> CLASSE DOS PARAFUSOS DA TAMPAA AA-70. NAO ABRA QUANDO HOUVER BASES OU POS ESTABELECIDOS NO AMBIENTE POTENCIAL PERIGO DE DESCARGA ELETRICITATIVA. TODAS AS ENTRADAS DEBEM SER A TEMPERATURA EXCEDER 70°C NA ENTRADA OU 80°C NO PONTO DE RAMIFICACAO. USE UM CABO ADEQUADO E PRENSA-CABOS         </td> <td> <b>CALL POINT</b>            STEXC8PMS*****            IP66/67 / TYPE 4, 4X, 13            Year / Serial No.:            00/1CP8PMS000013         </td> </tr> <tr> <td> <b>STExCP8-PM-S-L</b>  <b>PRODUCT LABEL 1</b> </td> <td> </td> </tr> </table>	<b>STExCP8-PM-S-L</b> Maximum Power: 3.122W Input Voltage / Current: 48Vdc max 1A max / 24Vdc 3A max INDUSTRIAL CONTROL EQUIPMENT FOR USE IN HAZARDOUS LOCATIONS ALL ENTRIES MUST BE OF TEMPERATURE EXCEEDS 80°C AT ENTRY OR 80°C AT BRANCHING POINT - USE SUITABLE RATED CABLE AND CABLE GLANDS - SEE INSTRUCTIONS <b>WARNING:</b> USE COVER BOLTS CLASS AA-70. DO NOT OPEN WHEN AN EXPLOSIVE ATMOSPHERE IS PRESENT - POTENTIAL ELECTROSTATIC CHARGING HAZARD - SEE INSTRUCTIONS TO REDUCE THE RISK OF IONIZATION OF HAZARDOUS ATMOSPHERES. CONDUIT RUNS MUST HAVE A SEALING FITTING CONNECTED WITHIN 2 INCHES OF CONDUIT <b>CAUTION:</b> RISK OF ELECTRIC SHOCK - MORE THAN ONE DISCONNECT MAY BE REQUIRED TO DE-ENERGIZE THE EQUIPMENT BEFORE SERVICING. <b>AVERTISSEMENT:</b> UTILISER COUVRIRES BLOUONS CLASSE AA-70. NE PAS OUVRIRE EN PRESENCE D'ATMOSPHERE EXPLOSIVE. DANGER POTENTIEL CHARGE ELECTROSTATIQUE - VOIR LES INSTRUCTIONS POUR REDUIRE LE RISQUE D'INFLAMMATION DES ATMOSPHERES DANGEREUSES. LES CONDUITES DE CONDUIT DOIVENT AVOIR UN RACCORD D'ETANCHEITE RACCORDE A MOINS DE 2 POUCES DE L'ENTREPRISEMENT <b>ATTENTION:</b> RISQUE DE CHOC ELECTRIQUE - PLUSIEURS SECTIONNEURS PEUVENT ETRE NECESSAIRES POUR COUPER L'ALIMENTATION DE L'APPAREILLAGE AVANT D'ENTREPRENDRE L'ENTRETIEN. <b>ATENCAO:</b> CLASSE DOS PARAFUSOS DA TAMPAA AA-70. NAO ABRA QUANDO HOUVER BASES OU POS ESTABELECIDOS NO AMBIENTE POTENCIAL PERIGO DE DESCARGA ELETRICITATIVA. TODAS AS ENTRADAS DEBEM SER A TEMPERATURA EXCEDER 70°C NA ENTRADA OU 80°C NO PONTO DE RAMIFICACAO. USE UM CABO ADEQUADO E PRENSA-CABOS	<b>CALL POINT</b> STEXC8PMS***** IP66/67 / TYPE 4, 4X, 13 Year / Serial No.: 00/1CP8PMS000013	<b>STExCP8-PM-S-L</b> <b>PRODUCT LABEL 1</b>											
<b>STExCP8-PM-S-L</b> Maximum Power: 3.122W Input Voltage / Current: 48Vdc max 1A max / 24Vdc 3A max INDUSTRIAL CONTROL EQUIPMENT FOR USE IN HAZARDOUS LOCATIONS ALL ENTRIES MUST BE OF TEMPERATURE EXCEEDS 80°C AT ENTRY OR 80°C AT BRANCHING POINT - USE SUITABLE RATED CABLE AND CABLE GLANDS - SEE INSTRUCTIONS <b>WARNING:</b> USE COVER BOLTS CLASS AA-70. DO NOT OPEN WHEN AN EXPLOSIVE ATMOSPHERE IS PRESENT - POTENTIAL ELECTROSTATIC CHARGING HAZARD - SEE INSTRUCTIONS TO REDUCE THE RISK OF IONIZATION OF HAZARDOUS ATMOSPHERES. CONDUIT RUNS MUST HAVE A SEALING FITTING CONNECTED WITHIN 2 INCHES OF CONDUIT <b>CAUTION:</b> RISK OF ELECTRIC SHOCK - MORE THAN ONE DISCONNECT MAY BE REQUIRED TO DE-ENERGIZE THE EQUIPMENT BEFORE SERVICING. <b>AVERTISSEMENT:</b> UTILISER COUVRIRES BLOUONS CLASSE AA-70. NE PAS OUVRIRE EN PRESENCE D'ATMOSPHERE EXPLOSIVE. DANGER POTENTIEL CHARGE ELECTROSTATIQUE - VOIR LES INSTRUCTIONS POUR REDUIRE LE RISQUE D'INFLAMMATION DES ATMOSPHERES DANGEREUSES. LES CONDUITES DE CONDUIT DOIVENT AVOIR UN RACCORD D'ETANCHEITE RACCORDE A MOINS DE 2 POUCES DE L'ENTREPRISEMENT <b>ATTENTION:</b> RISQUE DE CHOC ELECTRIQUE - PLUSIEURS SECTIONNEURS PEUVENT ETRE NECESSAIRES POUR COUPER L'ALIMENTATION DE L'APPAREILLAGE AVANT D'ENTREPRENDRE L'ENTRETIEN. <b>ATENCAO:</b> CLASSE DOS PARAFUSOS DA TAMPAA AA-70. NAO ABRA QUANDO HOUVER BASES OU POS ESTABELECIDOS NO AMBIENTE POTENCIAL PERIGO DE DESCARGA ELETRICITATIVA. TODAS AS ENTRADAS DEBEM SER A TEMPERATURA EXCEDER 70°C NA ENTRADA OU 80°C NO PONTO DE RAMIFICACAO. USE UM CABO ADEQUADO E PRENSA-CABOS	<b>CALL POINT</b> STEXC8PMS***** IP66/67 / TYPE 4, 4X, 13 Year / Serial No.: 00/1CP8PMS000013																						
<b>STExCP8-PM-S-L</b> <b>PRODUCT LABEL 1</b>																							
D									<table border="1"> <tr> <td> <b>STExCP8-PM-S-C</b>            Maximum Power: 3.122W            Input Voltage / Current: 48Vdc max 20mA max            INDUSTRIAL CONTROL EQUIPMENT FOR USE IN HAZARDOUS LOCATIONS            ALL ENTRIES MUST BE OF TEMPERATURE EXCEEDS 80°C AT ENTRY OR 80°C AT BRANCHING POINT - USE SUITABLE RATED CABLE AND CABLE GLANDS - SEE INSTRUCTIONS  <b>WARNING:</b> USE COVER BOLTS CLASS AA-70. DO NOT OPEN WHEN AN EXPLOSIVE ATMOSPHERE IS PRESENT - POTENTIAL ELECTROSTATIC CHARGING HAZARD - SEE INSTRUCTIONS TO REDUCE THE RISK OF IONIZATION OF HAZARDOUS ATMOSPHERES. CONDUIT RUNS MUST HAVE A SEALING FITTING CONNECTED WITHIN 2 INCHES OF CONDUIT  <b>CAUTION:</b> RISK OF ELECTRIC SHOCK - MORE THAN ONE DISCONNECT MAY BE REQUIRED TO DE-ENERGIZE THE EQUIPMENT BEFORE SERVICING.  <b>AVERTISSEMENT:</b> UTILISER COUVRIRES BLOUONS CLASSE AA-70. NE PAS OUVRIRE EN PRESENCE D'ATMOSPHERE EXPLOSIVE. DANGER POTENTIEL CHARGE ELECTROSTATIQUE - VOIR LES INSTRUCTIONS POUR REDUIRE LE RISQUE D'INFLAMMATION DES ATMOSPHERES DANGEREUSES. LES CONDUITES DE CONDUIT DOIVENT AVOIR UN RACCORD D'ETANCHEITE RACCORDE A MOINS DE 2 POUCES DE L'ENTREPRISEMENT  <b>ATTENTION:</b> RISQUE DE CHOC ELECTRIQUE - PLUSIEURS SECTIONNEURS PEUVENT ETRE NECESSAIRES POUR COUPER L'ALIMENTATION DE L'APPAREILLAGE AVANT D'ENTREPRENDRE L'ENTRETIEN.  <b>ATENCAO:</b> CLASSE DOS PARAFUSOS DA TAMPAA AA-70. NAO ABRA QUANDO HOUVER BASES OU POS ESTABELECIDOS NO AMBIENTE POTENCIAL PERIGO DE DESCARGA ELETRICITATIVA. TODAS AS ENTRADAS DEBEM SER A TEMPERATURA EXCEDER 70°C NA ENTRADA OU 80°C NO PONTO DE RAMIFICACAO. USE UM CABO ADEQUADO E PRENSA-CABOS         </td> <td> <b>CALL POINT</b>            STEXC8PMS*****            IP66/67 / TYPE 4, 4X, 13            Year / Serial No.:            00/1CP8PMS000016         </td> </tr> <tr> <td> <b>STExCP8-PM-S-C</b>  <b>PRODUCT LABEL 1</b> </td> <td> </td> </tr> </table>	<b>STExCP8-PM-S-C</b> Maximum Power: 3.122W Input Voltage / Current: 48Vdc max 20mA max INDUSTRIAL CONTROL EQUIPMENT FOR USE IN HAZARDOUS LOCATIONS ALL ENTRIES MUST BE OF TEMPERATURE EXCEEDS 80°C AT ENTRY OR 80°C AT BRANCHING POINT - USE SUITABLE RATED CABLE AND CABLE GLANDS - SEE INSTRUCTIONS <b>WARNING:</b> USE COVER BOLTS CLASS AA-70. DO NOT OPEN WHEN AN EXPLOSIVE ATMOSPHERE IS PRESENT - POTENTIAL ELECTROSTATIC CHARGING HAZARD - SEE INSTRUCTIONS TO REDUCE THE RISK OF IONIZATION OF HAZARDOUS ATMOSPHERES. CONDUIT RUNS MUST HAVE A SEALING FITTING CONNECTED WITHIN 2 INCHES OF CONDUIT <b>CAUTION:</b> RISK OF ELECTRIC SHOCK - MORE THAN ONE DISCONNECT MAY BE REQUIRED TO DE-ENERGIZE THE EQUIPMENT BEFORE SERVICING. <b>AVERTISSEMENT:</b> UTILISER COUVRIRES BLOUONS CLASSE AA-70. NE PAS OUVRIRE EN PRESENCE D'ATMOSPHERE EXPLOSIVE. DANGER POTENTIEL CHARGE ELECTROSTATIQUE - VOIR LES INSTRUCTIONS POUR REDUIRE LE RISQUE D'INFLAMMATION DES ATMOSPHERES DANGEREUSES. LES CONDUITES DE CONDUIT DOIVENT AVOIR UN RACCORD D'ETANCHEITE RACCORDE A MOINS DE 2 POUCES DE L'ENTREPRISEMENT <b>ATTENTION:</b> RISQUE DE CHOC ELECTRIQUE - PLUSIEURS SECTIONNEURS PEUVENT ETRE NECESSAIRES POUR COUPER L'ALIMENTATION DE L'APPAREILLAGE AVANT D'ENTREPRENDRE L'ENTRETIEN. <b>ATENCAO:</b> CLASSE DOS PARAFUSOS DA TAMPAA AA-70. NAO ABRA QUANDO HOUVER BASES OU POS ESTABELECIDOS NO AMBIENTE POTENCIAL PERIGO DE DESCARGA ELETRICITATIVA. TODAS AS ENTRADAS DEBEM SER A TEMPERATURA EXCEDER 70°C NA ENTRADA OU 80°C NO PONTO DE RAMIFICACAO. USE UM CABO ADEQUADO E PRENSA-CABOS	<b>CALL POINT</b> STEXC8PMS***** IP66/67 / TYPE 4, 4X, 13 Year / Serial No.: 00/1CP8PMS000016	<b>STExCP8-PM-S-C</b> <b>PRODUCT LABEL 1</b>											
<b>STExCP8-PM-S-C</b> Maximum Power: 3.122W Input Voltage / Current: 48Vdc max 20mA max INDUSTRIAL CONTROL EQUIPMENT FOR USE IN HAZARDOUS LOCATIONS ALL ENTRIES MUST BE OF TEMPERATURE EXCEEDS 80°C AT ENTRY OR 80°C AT BRANCHING POINT - USE SUITABLE RATED CABLE AND CABLE GLANDS - SEE INSTRUCTIONS <b>WARNING:</b> USE COVER BOLTS CLASS AA-70. DO NOT OPEN WHEN AN EXPLOSIVE ATMOSPHERE IS PRESENT - POTENTIAL ELECTROSTATIC CHARGING HAZARD - SEE INSTRUCTIONS TO REDUCE THE RISK OF IONIZATION OF HAZARDOUS ATMOSPHERES. CONDUIT RUNS MUST HAVE A SEALING FITTING CONNECTED WITHIN 2 INCHES OF CONDUIT <b>CAUTION:</b> RISK OF ELECTRIC SHOCK - MORE THAN ONE DISCONNECT MAY BE REQUIRED TO DE-ENERGIZE THE EQUIPMENT BEFORE SERVICING. <b>AVERTISSEMENT:</b> UTILISER COUVRIRES BLOUONS CLASSE AA-70. NE PAS OUVRIRE EN PRESENCE D'ATMOSPHERE EXPLOSIVE. DANGER POTENTIEL CHARGE ELECTROSTATIQUE - VOIR LES INSTRUCTIONS POUR REDUIRE LE RISQUE D'INFLAMMATION DES ATMOSPHERES DANGEREUSES. LES CONDUITES DE CONDUIT DOIVENT AVOIR UN RACCORD D'ETANCHEITE RACCORDE A MOINS DE 2 POUCES DE L'ENTREPRISEMENT <b>ATTENTION:</b> RISQUE DE CHOC ELECTRIQUE - PLUSIEURS SECTIONNEURS PEUVENT ETRE NECESSAIRES POUR COUPER L'ALIMENTATION DE L'APPAREILLAGE AVANT D'ENTREPRENDRE L'ENTRETIEN. <b>ATENCAO:</b> CLASSE DOS PARAFUSOS DA TAMPAA AA-70. NAO ABRA QUANDO HOUVER BASES OU POS ESTABELECIDOS NO AMBIENTE POTENCIAL PERIGO DE DESCARGA ELETRICITATIVA. TODAS AS ENTRADAS DEBEM SER A TEMPERATURA EXCEDER 70°C NA ENTRADA OU 80°C NO PONTO DE RAMIFICACAO. USE UM CABO ADEQUADO E PRENSA-CABOS	<b>CALL POINT</b> STEXC8PMS***** IP66/67 / TYPE 4, 4X, 13 Year / Serial No.: 00/1CP8PMS000016																						
<b>STExCP8-PM-S-C</b> <b>PRODUCT LABEL 1</b>																							
E									<table border="1"> <tr> <td> <b>STExCP8-PM-D</b>            Maximum Power: 6.244W            Input Voltage / Current: 48Vdc max 1A max / 24Vdc 3A max            Input Voltage / Current: 250Vdc 50/60Hz max 3.33A max            INDUSTRIAL CONTROL EQUIPMENT FOR USE IN HAZARDOUS LOCATIONS            ALL ENTRIES MUST BE OF TEMPERATURE EXCEEDS 80°C AT ENTRY OR 80°C AT BRANCHING POINT - USE SUITABLE RATED CABLE AND CABLE GLANDS - SEE INSTRUCTIONS  <b>WARNING:</b> USE COVER BOLTS CLASS AA-70. DO NOT OPEN WHEN AN EXPLOSIVE ATMOSPHERE IS PRESENT - POTENTIAL ELECTROSTATIC CHARGING HAZARD - SEE INSTRUCTIONS TO REDUCE THE RISK OF IONIZATION OF HAZARDOUS ATMOSPHERES. CONDUIT RUNS MUST HAVE A SEALING FITTING CONNECTED WITHIN 2 INCHES OF CONDUIT  <b>CAUTION:</b> RISK OF ELECTRIC SHOCK - MORE THAN ONE DISCONNECT MAY BE REQUIRED TO DE-ENERGIZE THE EQUIPMENT BEFORE SERVICING.  <b>AVERTISSEMENT:</b> UTILISER COUVRIRES BLOUONS CLASSE AA-70. NE PAS OUVRIRE EN PRESENCE D'ATMOSPHERE EXPLOSIVE. DANGER POTENTIEL CHARGE ELECTROSTATIQUE - VOIR LES INSTRUCTIONS POUR REDUIRE LE RISQUE D'INFLAMMATION DES ATMOSPHERES DANGEREUSES. LES CONDUITES DE CONDUIT DOIVENT AVOIR UN RACCORD D'ETANCHEITE RACCORDE A MOINS DE 2 POUCES DE L'ENTREPRISEMENT  <b>ATTENTION:</b> RISQUE DE CHOC ELECTRIQUE - PLUSIEURS SECTIONNEURS PEUVENT ETRE NECESSAIRES POUR COUPER L'ALIMENTATION DE L'APPAREILLAGE AVANT D'ENTREPRENDRE L'ENTRETIEN.  <b>ATENCAO:</b> CLASSE DOS PARAFUSOS DA TAMPAA AA-70. NAO ABRA QUANDO HOUVER BASES OU POS ESTABELECIDOS NO AMBIENTE POTENCIAL PERIGO DE DESCARGA ELETRICITATIVA. TODAS AS ENTRADAS DEBEM SER A TEMPERATURA EXCEDER 70°C NA ENTRADA OU 80°C NO PONTO DE RAMIFICACAO. USE UM CABO ADEQUADO E PRENSA-CABOS         </td> <td> <b>CALL POINT</b>            STEXC8PMD*****            IP66/67 / TYPE 4, 4X, 13            Year / Serial No.:            00/1CP8PMD000010         </td> </tr> <tr> <td> <b>STExCP8-PM-D</b>  <b>PRODUCT LABEL 1</b> </td> <td> </td> </tr> </table>	<b>STExCP8-PM-D</b> Maximum Power: 6.244W Input Voltage / Current: 48Vdc max 1A max / 24Vdc 3A max Input Voltage / Current: 250Vdc 50/60Hz max 3.33A max INDUSTRIAL CONTROL EQUIPMENT FOR USE IN HAZARDOUS LOCATIONS ALL ENTRIES MUST BE OF TEMPERATURE EXCEEDS 80°C AT ENTRY OR 80°C AT BRANCHING POINT - USE SUITABLE RATED CABLE AND CABLE GLANDS - SEE INSTRUCTIONS <b>WARNING:</b> USE COVER BOLTS CLASS AA-70. DO NOT OPEN WHEN AN EXPLOSIVE ATMOSPHERE IS PRESENT - POTENTIAL ELECTROSTATIC CHARGING HAZARD - SEE INSTRUCTIONS TO REDUCE THE RISK OF IONIZATION OF HAZARDOUS ATMOSPHERES. CONDUIT RUNS MUST HAVE A SEALING FITTING CONNECTED WITHIN 2 INCHES OF CONDUIT <b>CAUTION:</b> RISK OF ELECTRIC SHOCK - MORE THAN ONE DISCONNECT MAY BE REQUIRED TO DE-ENERGIZE THE EQUIPMENT BEFORE SERVICING. <b>AVERTISSEMENT:</b> UTILISER COUVRIRES BLOUONS CLASSE AA-70. NE PAS OUVRIRE EN PRESENCE D'ATMOSPHERE EXPLOSIVE. DANGER POTENTIEL CHARGE ELECTROSTATIQUE - VOIR LES INSTRUCTIONS POUR REDUIRE LE RISQUE D'INFLAMMATION DES ATMOSPHERES DANGEREUSES. LES CONDUITES DE CONDUIT DOIVENT AVOIR UN RACCORD D'ETANCHEITE RACCORDE A MOINS DE 2 POUCES DE L'ENTREPRISEMENT <b>ATTENTION:</b> RISQUE DE CHOC ELECTRIQUE - PLUSIEURS SECTIONNEURS PEUVENT ETRE NECESSAIRES POUR COUPER L'ALIMENTATION DE L'APPAREILLAGE AVANT D'ENTREPRENDRE L'ENTRETIEN. <b>ATENCAO:</b> CLASSE DOS PARAFUSOS DA TAMPAA AA-70. NAO ABRA QUANDO HOUVER BASES OU POS ESTABELECIDOS NO AMBIENTE POTENCIAL PERIGO DE DESCARGA ELETRICITATIVA. TODAS AS ENTRADAS DEBEM SER A TEMPERATURA EXCEDER 70°C NA ENTRADA OU 80°C NO PONTO DE RAMIFICACAO. USE UM CABO ADEQUADO E PRENSA-CABOS	<b>CALL POINT</b> STEXC8PMD***** IP66/67 / TYPE 4, 4X, 13 Year / Serial No.: 00/1CP8PMD000010	<b>STExCP8-PM-D</b> <b>PRODUCT LABEL 1</b>											
<b>STExCP8-PM-D</b> Maximum Power: 6.244W Input Voltage / Current: 48Vdc max 1A max / 24Vdc 3A max Input Voltage / Current: 250Vdc 50/60Hz max 3.33A max INDUSTRIAL CONTROL EQUIPMENT FOR USE IN HAZARDOUS LOCATIONS ALL ENTRIES MUST BE OF TEMPERATURE EXCEEDS 80°C AT ENTRY OR 80°C AT BRANCHING POINT - USE SUITABLE RATED CABLE AND CABLE GLANDS - SEE INSTRUCTIONS <b>WARNING:</b> USE COVER BOLTS CLASS AA-70. DO NOT OPEN WHEN AN EXPLOSIVE ATMOSPHERE IS PRESENT - POTENTIAL ELECTROSTATIC CHARGING HAZARD - SEE INSTRUCTIONS TO REDUCE THE RISK OF IONIZATION OF HAZARDOUS ATMOSPHERES. CONDUIT RUNS MUST HAVE A SEALING FITTING CONNECTED WITHIN 2 INCHES OF CONDUIT <b>CAUTION:</b> RISK OF ELECTRIC SHOCK - MORE THAN ONE DISCONNECT MAY BE REQUIRED TO DE-ENERGIZE THE EQUIPMENT BEFORE SERVICING. <b>AVERTISSEMENT:</b> UTILISER COUVRIRES BLOUONS CLASSE AA-70. NE PAS OUVRIRE EN PRESENCE D'ATMOSPHERE EXPLOSIVE. DANGER POTENTIEL CHARGE ELECTROSTATIQUE - VOIR LES INSTRUCTIONS POUR REDUIRE LE RISQUE D'INFLAMMATION DES ATMOSPHERES DANGEREUSES. LES CONDUITES DE CONDUIT DOIVENT AVOIR UN RACCORD D'ETANCHEITE RACCORDE A MOINS DE 2 POUCES DE L'ENTREPRISEMENT <b>ATTENTION:</b> RISQUE DE CHOC ELECTRIQUE - PLUSIEURS SECTIONNEURS PEUVENT ETRE NECESSAIRES POUR COUPER L'ALIMENTATION DE L'APPAREILLAGE AVANT D'ENTREPRENDRE L'ENTRETIEN. <b>ATENCAO:</b> CLASSE DOS PARAFUSOS DA TAMPAA AA-70. NAO ABRA QUANDO HOUVER BASES OU POS ESTABELECIDOS NO AMBIENTE POTENCIAL PERIGO DE DESCARGA ELETRICITATIVA. TODAS AS ENTRADAS DEBEM SER A TEMPERATURA EXCEDER 70°C NA ENTRADA OU 80°C NO PONTO DE RAMIFICACAO. USE UM CABO ADEQUADO E PRENSA-CABOS	<b>CALL POINT</b> STEXC8PMD***** IP66/67 / TYPE 4, 4X, 13 Year / Serial No.: 00/1CP8PMD000010																						
<b>STExCP8-PM-D</b> <b>PRODUCT LABEL 1</b>																							
F									<table border="1"> <tr> <td> <b>STExCP8-PM-D-L</b>            Maximum Power: 6.244W            Input Voltage / Current: 48Vdc max 1A max / 24Vdc 3A max            INDUSTRIAL CONTROL EQUIPMENT FOR USE IN HAZARDOUS LOCATIONS            ALL ENTRIES MUST BE OF TEMPERATURE EXCEEDS 80°C AT ENTRY OR 80°C AT BRANCHING POINT - USE SUITABLE RATED CABLE AND CABLE GLANDS - SEE INSTRUCTIONS  <b>WARNING:</b> USE COVER BOLTS CLASS AA-70. DO NOT OPEN WHEN AN EXPLOSIVE ATMOSPHERE IS PRESENT - POTENTIAL ELECTROSTATIC CHARGING HAZARD - SEE INSTRUCTIONS TO REDUCE THE RISK OF IONIZATION OF HAZARDOUS ATMOSPHERES. CONDUIT RUNS MUST HAVE A SEALING FITTING CONNECTED WITHIN 2 INCHES OF CONDUIT  <b>CAUTION:</b> RISK OF ELECTRIC SHOCK - MORE THAN ONE DISCONNECT MAY BE REQUIRED TO DE-ENERGIZE THE EQUIPMENT BEFORE SERVICING.  <b>AVERTISSEMENT:</b> UTILISER COUVRIRES BLOUONS CLASSE AA-70. NE PAS OUVRIRE EN PRESENCE D'ATMOSPHERE EXPLOSIVE. DANGER POTENTIEL CHARGE ELECTROSTATIQUE - VOIR LES INSTRUCTIONS POUR REDUIRE LE RISQUE D'INFLAMMATION DES ATMOSPHERES DANGEREUSES. LES CONDUITES DE CONDUIT DOIVENT AVOIR UN RACCORD D'ETANCHEITE RACCORDE A MOINS DE 2 POUCES DE L'ENTREPRISEMENT  <b>ATTENTION:</b> RISQUE DE CHOC ELECTRIQUE - PLUSIEURS SECTIONNEURS PEUVENT ETRE NECESSAIRES POUR COUPER L'ALIMENTATION DE L'APPAREILLAGE AVANT D'ENTREPRENDRE L'ENTRETIEN.  <b>ATENCAO:</b> CLASSE DOS PARAFUSOS DA TAMPAA AA-70. NAO ABRA QUANDO HOUVER BASES OU POS ESTABELECIDOS NO AMBIENTE POTENCIAL PERIGO DE DESCARGA ELETRICITATIVA. TODAS AS ENTRADAS DEBEM SER A TEMPERATURA EXCEDER 70°C NA ENTRADA OU 80°C NO PONTO DE RAMIFICACAO. USE UM CABO ADEQUADO E PRENSA-CABOS         </td> <td> <b>CALL POINT</b>            STEXC8PMD*****            IP66/67 / TYPE 4, 4X, 13            Year / Serial No.:            00/1CP8PMD000019         </td> </tr> <tr> <td> <b>STExCP8-PM-D-L</b>  <b>PRODUCT LABEL 1</b> </td> <td> </td> </tr> </table>	<b>STExCP8-PM-D-L</b> Maximum Power: 6.244W Input Voltage / Current: 48Vdc max 1A max / 24Vdc 3A max INDUSTRIAL CONTROL EQUIPMENT FOR USE IN HAZARDOUS LOCATIONS ALL ENTRIES MUST BE OF TEMPERATURE EXCEEDS 80°C AT ENTRY OR 80°C AT BRANCHING POINT - USE SUITABLE RATED CABLE AND CABLE GLANDS - SEE INSTRUCTIONS <b>WARNING:</b> USE COVER BOLTS CLASS AA-70. DO NOT OPEN WHEN AN EXPLOSIVE ATMOSPHERE IS PRESENT - POTENTIAL ELECTROSTATIC CHARGING HAZARD - SEE INSTRUCTIONS TO REDUCE THE RISK OF IONIZATION OF HAZARDOUS ATMOSPHERES. CONDUIT RUNS MUST HAVE A SEALING FITTING CONNECTED WITHIN 2 INCHES OF CONDUIT <b>CAUTION:</b> RISK OF ELECTRIC SHOCK - MORE THAN ONE DISCONNECT MAY BE REQUIRED TO DE-ENERGIZE THE EQUIPMENT BEFORE SERVICING. <b>AVERTISSEMENT:</b> UTILISER COUVRIRES BLOUONS CLASSE AA-70. NE PAS OUVRIRE EN PRESENCE D'ATMOSPHERE EXPLOSIVE. DANGER POTENTIEL CHARGE ELECTROSTATIQUE - VOIR LES INSTRUCTIONS POUR REDUIRE LE RISQUE D'INFLAMMATION DES ATMOSPHERES DANGEREUSES. LES CONDUITES DE CONDUIT DOIVENT AVOIR UN RACCORD D'ETANCHEITE RACCORDE A MOINS DE 2 POUCES DE L'ENTREPRISEMENT <b>ATTENTION:</b> RISQUE DE CHOC ELECTRIQUE - PLUSIEURS SECTIONNEURS PEUVENT ETRE NECESSAIRES POUR COUPER L'ALIMENTATION DE L'APPAREILLAGE AVANT D'ENTREPRENDRE L'ENTRETIEN. <b>ATENCAO:</b> CLASSE DOS PARAFUSOS DA TAMPAA AA-70. NAO ABRA QUANDO HOUVER BASES OU POS ESTABELECIDOS NO AMBIENTE POTENCIAL PERIGO DE DESCARGA ELETRICITATIVA. TODAS AS ENTRADAS DEBEM SER A TEMPERATURA EXCEDER 70°C NA ENTRADA OU 80°C NO PONTO DE RAMIFICACAO. USE UM CABO ADEQUADO E PRENSA-CABOS	<b>CALL POINT</b> STEXC8PMD***** IP66/67 / TYPE 4, 4X, 13 Year / Serial No.: 00/1CP8PMD000019	<b>STExCP8-PM-D-L</b> <b>PRODUCT LABEL 1</b>											
<b>STExCP8-PM-D-L</b> Maximum Power: 6.244W Input Voltage / Current: 48Vdc max 1A max / 24Vdc 3A max INDUSTRIAL CONTROL EQUIPMENT FOR USE IN HAZARDOUS LOCATIONS ALL ENTRIES MUST BE OF TEMPERATURE EXCEEDS 80°C AT ENTRY OR 80°C AT BRANCHING POINT - USE SUITABLE RATED CABLE AND CABLE GLANDS - SEE INSTRUCTIONS <b>WARNING:</b> USE COVER BOLTS CLASS AA-70. DO NOT OPEN WHEN AN EXPLOSIVE ATMOSPHERE IS PRESENT - POTENTIAL ELECTROSTATIC CHARGING HAZARD - SEE INSTRUCTIONS TO REDUCE THE RISK OF IONIZATION OF HAZARDOUS ATMOSPHERES. CONDUIT RUNS MUST HAVE A SEALING FITTING CONNECTED WITHIN 2 INCHES OF CONDUIT <b>CAUTION:</b> RISK OF ELECTRIC SHOCK - MORE THAN ONE DISCONNECT MAY BE REQUIRED TO DE-ENERGIZE THE EQUIPMENT BEFORE SERVICING. <b>AVERTISSEMENT:</b> UTILISER COUVRIRES BLOUONS CLASSE AA-70. NE PAS OUVRIRE EN PRESENCE D'ATMOSPHERE EXPLOSIVE. DANGER POTENTIEL CHARGE ELECTROSTATIQUE - VOIR LES INSTRUCTIONS POUR REDUIRE LE RISQUE D'INFLAMMATION DES ATMOSPHERES DANGEREUSES. LES CONDUITES DE CONDUIT DOIVENT AVOIR UN RACCORD D'ETANCHEITE RACCORDE A MOINS DE 2 POUCES DE L'ENTREPRISEMENT <b>ATTENTION:</b> RISQUE DE CHOC ELECTRIQUE - PLUSIEURS SECTIONNEURS PEUVENT ETRE NECESSAIRES POUR COUPER L'ALIMENTATION DE L'APPAREILLAGE AVANT D'ENTREPRENDRE L'ENTRETIEN. <b>ATENCAO:</b> CLASSE DOS PARAFUSOS DA TAMPAA AA-70. NAO ABRA QUANDO HOUVER BASES OU POS ESTABELECIDOS NO AMBIENTE POTENCIAL PERIGO DE DESCARGA ELETRICITATIVA. TODAS AS ENTRADAS DEBEM SER A TEMPERATURA EXCEDER 70°C NA ENTRADA OU 80°C NO PONTO DE RAMIFICACAO. USE UM CABO ADEQUADO E PRENSA-CABOS	<b>CALL POINT</b> STEXC8PMD***** IP66/67 / TYPE 4, 4X, 13 Year / Serial No.: 00/1CP8PMD000019																						
<b>STExCP8-PM-D-L</b> <b>PRODUCT LABEL 1</b>																							
									<table border="1"> <tr> <td> <b>STExCP8-PM-D-C</b>            Maximum Power: 6.244W            Input Voltage / Current: 48Vdc max 20mA max            INDUSTRIAL CONTROL EQUIPMENT FOR USE IN HAZARDOUS LOCATIONS            ALL ENTRIES MUST BE OF TEMPERATURE EXCEEDS 80°C AT ENTRY OR 80°C AT BRANCHING POINT - USE SUITABLE RATED CABLE AND CABLE GLANDS - SEE INSTRUCTIONS  <b>WARNING:</b> USE COVER BOLTS CLASS AA-70. DO NOT OPEN WHEN AN EXPLOSIVE ATMOSPHERE IS PRESENT - POTENTIAL ELECTROSTATIC CHARGING HAZARD - SEE INSTRUCTIONS TO REDUCE THE RISK OF IONIZATION OF HAZARDOUS ATMOSPHERES. CONDUIT RUNS MUST HAVE A SEALING FITTING CONNECTED WITHIN 2 INCHES OF CONDUIT  <b>CAUTION:</b> RISK OF ELECTRIC SHOCK - MORE THAN ONE DISCONNECT MAY BE REQUIRED TO DE-ENERGIZE THE EQUIPMENT BEFORE SERVICING.  <b>AVERTISSEMENT:</b> UTILISER COUVRIRES BLOUONS CLASSE AA-70. NE PAS OUVRIRE EN PRESENCE D'ATMOSPHERE EXPLOSIVE. DANGER POTENTIEL CHARGE ELECTROSTATIQUE - VOIR LES INSTRUCTIONS POUR REDUIRE LE RISQUE D'INFLAMMATION DES ATMOSPHERES DANGEREUSES. LES CONDUITES DE CONDUIT DOIVENT AVOIR UN RACCORD D'ETANCHEITE RACCORDE A MOINS DE 2 POUCES DE L'ENTREPRISEMENT  <b>ATTENTION:</b> RISQUE DE CHOC ELECTRIQUE - PLUSIEURS SECTIONNEURS PEUVENT ETRE NECESSAIRES POUR COUPER L'ALIMENTATION DE L'APPAREILLAGE AVANT D'ENTREPRENDRE L'ENTRETIEN.  <b>ATENCAO:</b> CLASSE DOS PARAFUSOS DA TAMPAA AA-70. NAO ABRA QUANDO HOUVER BASES OU POS ESTABELECIDOS NO AMBIENTE POTENCIAL PERIGO DE DESCARGA ELETRICITATIVA. TODAS AS ENTRADAS DEBEM SER A TEMPERATURA EXCEDER 70°C NA ENTRADA OU 80°C NO PONTO DE RAMIFICACAO. USE UM CABO ADEQUADO E PRENSA-CABOS         </td> <td> <b>CALL POINT</b>            STEXC8PMD*****            IP66/67 / TYPE 4, 4X, 13            Year / Serial No.:            00/1CP8PMD000022         </td> </tr> <tr> <td> <b>STExCP8-PM-D-C</b>  <b>PRODUCT LABEL 1</b> </td> <td> </td> </tr> </table>	<b>STExCP8-PM-D-C</b> Maximum Power: 6.244W Input Voltage / Current: 48Vdc max 20mA max INDUSTRIAL CONTROL EQUIPMENT FOR USE IN HAZARDOUS LOCATIONS ALL ENTRIES MUST BE OF TEMPERATURE EXCEEDS 80°C AT ENTRY OR 80°C AT BRANCHING POINT - USE SUITABLE RATED CABLE AND CABLE GLANDS - SEE INSTRUCTIONS <b>WARNING:</b> USE COVER BOLTS CLASS AA-70. DO NOT OPEN WHEN AN EXPLOSIVE ATMOSPHERE IS PRESENT - POTENTIAL ELECTROSTATIC CHARGING HAZARD - SEE INSTRUCTIONS TO REDUCE THE RISK OF IONIZATION OF HAZARDOUS ATMOSPHERES. CONDUIT RUNS MUST HAVE A SEALING FITTING CONNECTED WITHIN 2 INCHES OF CONDUIT <b>CAUTION:</b> RISK OF ELECTRIC SHOCK - MORE THAN ONE DISCONNECT MAY BE REQUIRED TO DE-ENERGIZE THE EQUIPMENT BEFORE SERVICING. <b>AVERTISSEMENT:</b> UTILISER COUVRIRES BLOUONS CLASSE AA-70. NE PAS OUVRIRE EN PRESENCE D'ATMOSPHERE EXPLOSIVE. DANGER POTENTIEL CHARGE ELECTROSTATIQUE - VOIR LES INSTRUCTIONS POUR REDUIRE LE RISQUE D'INFLAMMATION DES ATMOSPHERES DANGEREUSES. LES CONDUITES DE CONDUIT DOIVENT AVOIR UN RACCORD D'ETANCHEITE RACCORDE A MOINS DE 2 POUCES DE L'ENTREPRISEMENT <b>ATTENTION:</b> RISQUE DE CHOC ELECTRIQUE - PLUSIEURS SECTIONNEURS PEUVENT ETRE NECESSAIRES POUR COUPER L'ALIMENTATION DE L'APPAREILLAGE AVANT D'ENTREPRENDRE L'ENTRETIEN. <b>ATENCAO:</b> CLASSE DOS PARAFUSOS DA TAMPAA AA-70. NAO ABRA QUANDO HOUVER BASES OU POS ESTABELECIDOS NO AMBIENTE POTENCIAL PERIGO DE DESCARGA ELETRICITATIVA. TODAS AS ENTRADAS DEBEM SER A TEMPERATURA EXCEDER 70°C NA ENTRADA OU 80°C NO PONTO DE RAMIFICACAO. USE UM CABO ADEQUADO E PRENSA-CABOS	<b>CALL POINT</b> STEXC8PMD***** IP66/67 / TYPE 4, 4X, 13 Year / Serial No.: 00/1CP8PMD000022	<b>STExCP8-PM-D-C</b> <b>PRODUCT LABEL 1</b>											
<b>STExCP8-PM-D-C</b> Maximum Power: 6.244W Input Voltage / Current: 48Vdc max 20mA max INDUSTRIAL CONTROL EQUIPMENT FOR USE IN HAZARDOUS LOCATIONS ALL ENTRIES MUST BE OF TEMPERATURE EXCEEDS 80°C AT ENTRY OR 80°C AT BRANCHING POINT - USE SUITABLE RATED CABLE AND CABLE GLANDS - SEE INSTRUCTIONS <b>WARNING:</b> USE COVER BOLTS CLASS AA-70. DO NOT OPEN WHEN AN EXPLOSIVE ATMOSPHERE IS PRESENT - POTENTIAL ELECTROSTATIC CHARGING HAZARD - SEE INSTRUCTIONS TO REDUCE THE RISK OF IONIZATION OF HAZARDOUS ATMOSPHERES. CONDUIT RUNS MUST HAVE A SEALING FITTING CONNECTED WITHIN 2 INCHES OF CONDUIT <b>CAUTION:</b> RISK OF ELECTRIC SHOCK - MORE THAN ONE DISCONNECT MAY BE REQUIRED TO DE-ENERGIZE THE EQUIPMENT BEFORE SERVICING. <b>AVERTISSEMENT:</b> UTILISER COUVRIRES BLOUONS CLASSE AA-70. NE PAS OUVRIRE EN PRESENCE D'ATMOSPHERE EXPLOSIVE. DANGER POTENTIEL CHARGE ELECTROSTATIQUE - VOIR LES INSTRUCTIONS POUR REDUIRE LE RISQUE D'INFLAMMATION DES ATMOSPHERES DANGEREUSES. LES CONDUITES DE CONDUIT DOIVENT AVOIR UN RACCORD D'ETANCHEITE RACCORDE A MOINS DE 2 POUCES DE L'ENTREPRISEMENT <b>ATTENTION:</b> RISQUE DE CHOC ELECTRIQUE - PLUSIEURS SECTIONNEURS PEUVENT ETRE NECESSAIRES POUR COUPER L'ALIMENTATION DE L'APPAREILLAGE AVANT D'ENTREPRENDRE L'ENTRETIEN. <b>ATENCAO:</b> CLASSE DOS PARAFUSOS DA TAMPAA AA-70. NAO ABRA QUANDO HOUVER BASES OU POS ESTABELECIDOS NO AMBIENTE POTENCIAL PERIGO DE DESCARGA ELETRICITATIVA. TODAS AS ENTRADAS DEBEM SER A TEMPERATURA EXCEDER 70°C NA ENTRADA OU 80°C NO PONTO DE RAMIFICACAO. USE UM CABO ADEQUADO E PRENSA-CABOS	<b>CALL POINT</b> STEXC8PMD***** IP66/67 / TYPE 4, 4X, 13 Year / Serial No.: 00/1CP8PMD000022																						
<b>STExCP8-PM-D-C</b> <b>PRODUCT LABEL 1</b>																							
									<table border="1"> <tr> <td> <b>STExCP8-PM-D-L</b>            Maximum Power: 6.244W            Input Voltage / Current: 48Vdc max 1A max / 24Vdc 3A max            INDUSTRIAL CONTROL EQUIPMENT FOR USE IN HAZARDOUS LOCATIONS            ALL ENTRIES MUST BE OF TEMPERATURE EXCEEDS 80°C AT ENTRY OR 80°C AT BRANCHING POINT - USE SUITABLE RATED CABLE AND CABLE GLANDS - SEE INSTRUCTIONS  <b>WARNING:</b> USE COVER BOLTS CLASS AA-70. DO NOT OPEN WHEN AN EXPLOSIVE ATMOSPHERE IS PRESENT - POTENTIAL ELECTROSTATIC CHARGING HAZARD - SEE INSTRUCTIONS TO REDUCE THE RISK OF IONIZATION OF HAZARDOUS ATMOSPHERES. CONDUIT RUNS MUST HAVE A SEALING FITTING CONNECTED WITHIN 2 INCHES OF CONDUIT  <b>CAUTION:</b> RISK OF ELECTRIC SHOCK - MORE THAN ONE DISCONNECT MAY BE REQUIRED TO DE-ENERGIZE THE EQUIPMENT BEFORE SERVICING.  <b>AVERTISSEMENT:</b> UTILISER COUVRIRES BLOUONS CLASSE AA-70. NE PAS OUVRIRE EN PRESENCE D'ATMOSPHERE EXPLOSIVE. DANGER POTENTIEL CHARGE ELECTROSTATIQUE - VOIR LES INSTRUCTIONS POUR REDUIRE LE RISQUE D'INFLAMMATION DES ATMOSPHERES DANGEREUSES. LES CONDUITES DE CONDUIT DOIVENT AVOIR UN RACCORD D'ETANCHEITE RACCORDE A MOINS DE 2 POUCES DE L'ENTREPRISEMENT  <b>ATTENTION:</b> RISQUE DE CHOC ELECTRIQUE - PLUSIEURS SECTIONNEURS PEUVENT ETRE NECESSAIRES POUR COUPER L'ALIMENTATION DE L'APPAREILLAGE AVANT D'ENTREPRENDRE L'ENTRETIEN.  <b>ATENCAO:</b> CLASSE DOS PARAFUSOS DA TAMPAA AA-70. NAO ABRA QUANDO HOUVER BASES OU POS ESTABELECIDOS NO AMBIENTE POTENCIAL PERIGO DE DESCARGA ELETRICITATIVA. TODAS AS ENTRADAS DEBEM SER A TEMPERATURA EXCEDER 70°C NA ENTRADA OU 80°C NO PONTO DE RAMIFICACAO. USE UM CABO ADEQUADO E PRENSA-CABOS         </td> <td> <b>CALL POINT</b>            STEXC8PMD*****            IP66/67 / TYPE 4, 4X, 13            Year / Serial No.:            00/1CP8PMD000019         </td> </tr> <tr> <td> <b>STExCP8-PM-D-L</b>  <b>PRODUCT LABEL 2</b> </td> <td> </td> </tr> </table>	<b>STExCP8-PM-D-L</b> Maximum Power: 6.244W Input Voltage / Current: 48Vdc max 1A max / 24Vdc 3A max INDUSTRIAL CONTROL EQUIPMENT FOR USE IN HAZARDOUS LOCATIONS ALL ENTRIES MUST BE OF TEMPERATURE EXCEEDS 80°C AT ENTRY OR 80°C AT BRANCHING POINT - USE SUITABLE RATED CABLE AND CABLE GLANDS - SEE INSTRUCTIONS <b>WARNING:</b> USE COVER BOLTS CLASS AA-70. DO NOT OPEN WHEN AN EXPLOSIVE ATMOSPHERE IS PRESENT - POTENTIAL ELECTROSTATIC CHARGING HAZARD - SEE INSTRUCTIONS TO REDUCE THE RISK OF IONIZATION OF HAZARDOUS ATMOSPHERES. CONDUIT RUNS MUST HAVE A SEALING FITTING CONNECTED WITHIN 2 INCHES OF CONDUIT <b>CAUTION:</b> RISK OF ELECTRIC SHOCK - MORE THAN ONE DISCONNECT MAY BE REQUIRED TO DE-ENERGIZE THE EQUIPMENT BEFORE SERVICING. <b>AVERTISSEMENT:</b> UTILISER COUVRIRES BLOUONS CLASSE AA-70. NE PAS OUVRIRE EN PRESENCE D'ATMOSPHERE EXPLOSIVE. DANGER POTENTIEL CHARGE ELECTROSTATIQUE - VOIR LES INSTRUCTIONS POUR REDUIRE LE RISQUE D'INFLAMMATION DES ATMOSPHERES DANGEREUSES. LES CONDUITES DE CONDUIT DOIVENT AVOIR UN RACCORD D'ETANCHEITE RACCORDE A MOINS DE 2 POUCES DE L'ENTREPRISEMENT <b>ATTENTION:</b> RISQUE DE CHOC ELECTRIQUE - PLUSIEURS SECTIONNEURS PEUVENT ETRE NECESSAIRES POUR COUPER L'ALIMENTATION DE L'APPAREILLAGE AVANT D'ENTREPRENDRE L'ENTRETIEN. <b>ATENCAO:</b> CLASSE DOS PARAFUSOS DA TAMPAA AA-70. NAO ABRA QUANDO HOUVER BASES OU POS ESTABELECIDOS NO AMBIENTE POTENCIAL PERIGO DE DESCARGA ELETRICITATIVA. TODAS AS ENTRADAS DEBEM SER A TEMPERATURA EXCEDER 70°C NA ENTRADA OU 80°C NO PONTO DE RAMIFICACAO. USE UM CABO ADEQUADO E PRENSA-CABOS	<b>CALL POINT</b> STEXC8PMD***** IP66/67 / TYPE 4, 4X, 13 Year / Serial No.: 00/1CP8PMD000019	<b>STExCP8-PM-D-L</b> <b>PRODUCT LABEL 2</b>											
<b>STExCP8-PM-D-L</b> Maximum Power: 6.244W Input Voltage / Current: 48Vdc max 1A max / 24Vdc 3A max INDUSTRIAL CONTROL EQUIPMENT FOR USE IN HAZARDOUS LOCATIONS ALL ENTRIES MUST BE OF TEMPERATURE EXCEEDS 80°C AT ENTRY OR 80°C AT BRANCHING POINT - USE SUITABLE RATED CABLE AND CABLE GLANDS - SEE INSTRUCTIONS <b>WARNING:</b> USE COVER BOLTS CLASS AA-70. DO NOT OPEN WHEN AN EXPLOSIVE ATMOSPHERE IS PRESENT - POTENTIAL ELECTROSTATIC CHARGING HAZARD - SEE INSTRUCTIONS TO REDUCE THE RISK OF IONIZATION OF HAZARDOUS ATMOSPHERES. CONDUIT RUNS MUST HAVE A SEALING FITTING CONNECTED WITHIN 2 INCHES OF CONDUIT <b>CAUTION:</b> RISK OF ELECTRIC SHOCK - MORE THAN ONE DISCONNECT MAY BE REQUIRED TO DE-ENERGIZE THE EQUIPMENT BEFORE SERVICING. <b>AVERTISSEMENT:</b> UTILISER COUVRIRES BLOUONS CLASSE AA-70. NE PAS OUVRIRE EN PRESENCE D'ATMOSPHERE EXPLOSIVE. DANGER POTENTIEL CHARGE ELECTROSTATIQUE - VOIR LES INSTRUCTIONS POUR REDUIRE LE RISQUE D'INFLAMMATION DES ATMOSPHERES DANGEREUSES. LES CONDUITES DE CONDUIT DOIVENT AVOIR UN RACCORD D'ETANCHEITE RACCORDE A MOINS DE 2 POUCES DE L'ENTREPRISEMENT <b>ATTENTION:</b> RISQUE DE CHOC ELECTRIQUE - PLUSIEURS SECTIONNEURS PEUVENT ETRE NECESSAIRES POUR COUPER L'ALIMENTATION DE L'APPAREILLAGE AVANT D'ENTREPRENDRE L'ENTRETIEN. <b>ATENCAO:</b> CLASSE DOS PARAFUSOS DA TAMPAA AA-70. NAO ABRA QUANDO HOUVER BASES OU POS ESTABELECIDOS NO AMBIENTE POTENCIAL PERIGO DE DESCARGA ELETRICITATIVA. TODAS AS ENTRADAS DEBEM SER A TEMPERATURA EXCEDER 70°C NA ENTRADA OU 80°C NO PONTO DE RAMIFICACAO. USE UM CABO ADEQUADO E PRENSA-CABOS	<b>CALL POINT</b> STEXC8PMD***** IP66/67 / TYPE 4, 4X, 13 Year / Serial No.: 00/1CP8PMD000019																						
<b>STExCP8-PM-D-L</b> <b>PRODUCT LABEL 2</b>																							
									<table border="1"> <tr> <td> <b>STExCP8-PM-D-C</b>            Maximum Power: 6.244W            Input Voltage / Current: 48Vdc max 20mA max            INDUSTRIAL CONTROL EQUIPMENT FOR USE IN HAZARDOUS LOCATIONS            ALL ENTRIES MUST BE OF TEMPERATURE EXCEEDS 80°C AT ENTRY OR 80°C AT BRANCHING POINT - USE SUITABLE RATED CABLE AND CABLE GLANDS - SEE INSTRUCTIONS  <b>WARNING:</b> USE COVER BOLTS CLASS AA-70. DO NOT OPEN WHEN AN EXPLOSIVE ATMOSPHERE IS PRESENT - POTENTIAL ELECTROSTATIC CHARGING HAZARD - SEE INSTRUCTIONS TO REDUCE THE RISK OF IONIZATION OF HAZARDOUS ATMOSPHERES. CONDUIT RUNS MUST HAVE A SEALING FITTING CONNECTED WITHIN 2 INCHES OF CONDUIT  <b>CAUTION:</b> RISK OF ELECTRIC SHOCK - MORE THAN ONE DISCONNECT MAY BE REQUIRED TO DE-ENERGIZE THE EQUIPMENT BEFORE SERVICING.  <b>AVERTISSEMENT:</b> UTILISER COUVRIRES BLOUONS CLASSE AA-70. NE PAS OUVRIRE EN PRESENCE D'ATMOSPHERE EXPLOSIVE. DANGER POTENTIEL CHARGE ELECTROSTATIQUE - VOIR LES INSTRUCTIONS POUR REDUIRE LE RISQUE D'INFLAMMATION DES ATMOSPHERES DANGEREUSES. LES CONDUITES DE CONDUIT DOIVENT AVOIR UN RACCORD D'ETANCHEITE RACCORDE A MOINS DE 2 POUCES DE L'ENTREPRISEMENT  <b>ATTENTION:</b> RISQUE DE CHOC ELECTRIQUE - PLUSIEURS SECTIONNEURS PEUVENT ETRE NECESSAIRES POUR COUPER L'ALIMENTATION DE L'APPAREILLAGE AVANT D'ENTREPRENDRE L'ENTRETIEN.  <b>ATENCAO:</b> CLASSE DOS PARAFUSOS DA TAMPAA AA-70. NAO ABRA QUANDO HOUVER BASES OU POS ESTABELECIDOS NO AMBIENTE POTENCIAL PERIGO DE DESCARGA ELETRICITATIVA. TODAS AS ENTRADAS DEBEM SER A TEMPERATURA EXCEDER 70°C NA ENTRADA OU 80°C NO PONTO DE RAMIFICACAO. USE UM CABO ADEQUADO E PRENSA-CABOS         </td> <td> <b>CALL POINT</b>            STEXC8PMD*****            IP66/67 / TYPE 4, 4X, 13            Year / Serial No.:            00/1CP8PMD000022         </td> </tr> <tr> <td> <b>STExCP8-PM-D-C</b>  <b>PRODUCT LABEL 2</b> </td> <td> </td> </tr> </table>	<b>STExCP8-PM-D-C</b> Maximum Power: 6.244W Input Voltage / Current: 48Vdc max 20mA max INDUSTRIAL CONTROL EQUIPMENT FOR USE IN HAZARDOUS LOCATIONS ALL ENTRIES MUST BE OF TEMPERATURE EXCEEDS 80°C AT ENTRY OR 80°C AT BRANCHING POINT - USE SUITABLE RATED CABLE AND CABLE GLANDS - SEE INSTRUCTIONS <b>WARNING:</b> USE COVER BOLTS CLASS AA-70. DO NOT OPEN WHEN AN EXPLOSIVE ATMOSPHERE IS PRESENT - POTENTIAL ELECTROSTATIC CHARGING HAZARD - SEE INSTRUCTIONS TO REDUCE THE RISK OF IONIZATION OF HAZARDOUS ATMOSPHERES. CONDUIT RUNS MUST HAVE A SEALING FITTING CONNECTED WITHIN 2 INCHES OF CONDUIT <b>CAUTION:</b> RISK OF ELECTRIC SHOCK - MORE THAN ONE DISCONNECT MAY BE REQUIRED TO DE-ENERGIZE THE EQUIPMENT BEFORE SERVICING. <b>AVERTISSEMENT:</b> UTILISER COUVRIRES BLOUONS CLASSE AA-70. NE PAS OUVRIRE EN PRESENCE D'ATMOSPHERE EXPLOSIVE. DANGER POTENTIEL CHARGE ELECTROSTATIQUE - VOIR LES INSTRUCTIONS POUR REDUIRE LE RISQUE D'INFLAMMATION DES ATMOSPHERES DANGEREUSES. LES CONDUITES DE CONDUIT DOIVENT AVOIR UN RACCORD D'ETANCHEITE RACCORDE A MOINS DE 2 POUCES DE L'ENTREPRISEMENT <b>ATTENTION:</b> RISQUE DE CHOC ELECTRIQUE - PLUSIEURS SECTIONNEURS PEUVENT ETRE NECESSAIRES POUR COUPER L'ALIMENTATION DE L'APPAREILLAGE AVANT D'ENTREPRENDRE L'ENTRETIEN. <b>ATENCAO:</b> CLASSE DOS PARAFUSOS DA TAMPAA AA-70. NAO ABRA QUANDO HOUVER BASES OU POS ESTABELECIDOS NO AMBIENTE POTENCIAL PERIGO DE DESCARGA ELETRICITATIVA. TODAS AS ENTRADAS DEBEM SER A TEMPERATURA EXCEDER 70°C NA ENTRADA OU 80°C NO PONTO DE RAMIFICACAO. USE UM CABO ADEQUADO E PRENSA-CABOS	<b>CALL POINT</b> STEXC8PMD***** IP66/67 / TYPE 4, 4X, 13 Year / Serial No.: 00/1CP8PMD000022	<b>STExCP8-PM-D-C</b> <b>PRODUCT LABEL 2</b>											
<b>STExCP8-PM-D-C</b> Maximum Power: 6.244W Input Voltage / Current: 48Vdc max 20mA max INDUSTRIAL CONTROL EQUIPMENT FOR USE IN HAZARDOUS LOCATIONS ALL ENTRIES MUST BE OF TEMPERATURE EXCEEDS 80°C AT ENTRY OR 80°C AT BRANCHING POINT - USE SUITABLE RATED CABLE AND CABLE GLANDS - SEE INSTRUCTIONS <b>WARNING:</b> USE COVER BOLTS CLASS AA-70. DO NOT OPEN WHEN AN EXPLOSIVE ATMOSPHERE IS PRESENT - POTENTIAL ELECTROSTATIC CHARGING HAZARD - SEE INSTRUCTIONS TO REDUCE THE RISK OF IONIZATION OF HAZARDOUS ATMOSPHERES. CONDUIT RUNS MUST HAVE A SEALING FITTING CONNECTED WITHIN 2 INCHES OF CONDUIT <b>CAUTION:</b> RISK OF ELECTRIC SHOCK - MORE THAN ONE DISCONNECT MAY BE REQUIRED TO DE-ENERGIZE THE EQUIPMENT BEFORE SERVICING. <b>AVERTISSEMENT:</b> UTILISER COUVRIRES BLOUONS CLASSE AA-70. NE PAS OUVRIRE EN PRESENCE D'ATMOSPHERE EXPLOSIVE. DANGER POTENTIEL CHARGE ELECTROSTATIQUE - VOIR LES INSTRUCTIONS POUR REDUIRE LE RISQUE D'INFLAMMATION DES ATMOSPHERES DANGEREUSES. LES CONDUITES DE CONDUIT DOIVENT AVOIR UN RACCORD D'ETANCHEITE RACCORDE A MOINS DE 2 POUCES DE L'ENTREPRISEMENT <b>ATTENTION:</b> RISQUE DE CHOC ELECTRIQUE - PLUSIEURS SECTIONNEURS PEUVENT ETRE NECESSAIRES POUR COUPER L'ALIMENTATION DE L'APPAREILLAGE AVANT D'ENTREPRENDRE L'ENTRETIEN. <b>ATENCAO:</b> CLASSE DOS PARAFUSOS DA TAMPAA AA-70. NAO ABRA QUANDO HOUVER BASES OU POS ESTABELECIDOS NO AMBIENTE POTENCIAL PERIGO DE DESCARGA ELETRICITATIVA. TODAS AS ENTRADAS DEBEM SER A TEMPERATURA EXCEDER 70°C NA ENTRADA OU 80°C NO PONTO DE RAMIFICACAO. USE UM CABO ADEQUADO E PRENSA-CABOS	<b>CALL POINT</b> STEXC8PMD***** IP66/67 / TYPE 4, 4X, 13 Year / Serial No.: 00/1CP8PMD000022																						
<b>STExCP8-PM-D-C</b> <b>PRODUCT LABEL 2</b>																							

G	DRAWING TO BS8888:2000 GEOMETRIC TOLERANCES TO ISO1101:1983 LINEAR DIMENSIONAL TOLS +/-0.35mm ANGULAR DIMENSIONAL TOLS +/-2 deg	DRAWN <b>D.HOWGILL</b>	DATE <b>19-06-20</b>	SURFACE FINISH	WEIGHT (Kg)	THIS DRAWING AND ANY INFORMATION OR DESCRIPTIVE MATTER THEREIN IS COMMUNICATED IN CONFIDENCE AND IS THE COPYRIGHT PROPERTY OF EUROPEAN SAFETY SYSTEMS LTD. NEITHER THE WHOLE OR ANY EXTRACT MAY BE DISCLOSED, LOANED, COPIED OR USED FOR MANUFACTURING OR TENDERING PURPOSES WITHOUT THEIR WRITTEN CONSENT.	EUROPEAN SAFETY SYSTEMS LTD IMPRESS HOUSE MANSELL ROAD ACTON LONDON W3 7QH WWW.E2S.COM	ALL DIMENSIONS IN MM		A3
	STANDARDS <b>STEx CP8          CALL POINTS</b>	CHECKED <b>R.N.POTTS</b>	DATE <b>19-06-20</b>	MATERIAL	TITLE <b>STEx CP8 PT / PB / PM PUSH BUTTON          CALL POINT PRODUCT LABEL</b>					
		APPROVED <b>R.N.POTTS</b>	DATE <b>19-06-20</b>	ALTERNATIVE MATERIAL	SCALE <b>1:1</b>			SHEET <b>3 of 3</b>	DRAWING NUMBER <b>D204-09-201</b>	
					EUROPEAN SAFETY SYSTEMS LTD. AS PER LATEST DATE OF ISSUE SHOWN ABOVE					