

SPECTRA B300STR

Xenon Strobe Flashing Beacon

5J Xenon Flash Tube

Three modes : Flashing 1 Hz,

Flashing 1.5Hz (DC units Only)

Double Strike (DC Units Only),

Stage Switchable to Double

Strike (DC Units Only)

IP Rating: IP65

Temp: -25°C to +50°C

Unit weight: 325g DC : 300g AC

CE, UKCA Marked



Dimensions : Ø100 x 150mm

1.5mm² terminals

Cable entry: 1 x 5-7mm push through grommet

1 x M20 cable entry (IP65)

[x] = Lens colour

R = Red

A = Amber

B = Blue

C = Clear

G = Green

Y = Yellow

Mountings

B300RAB001 Right angle bracket

B300TMA001 Tube mounting assembly

Order code

B300STR012B/[x]

Voltage

12V DC/AC 500/600mA

B300STR024B/[x]

24V DC/AC 250/300mA

B300STR048B/[x]

48V DC/AC 175/250mA

B300STR115B/[x]

115V AC 70mA

B300STR230B/[x]

230V AC 35mA

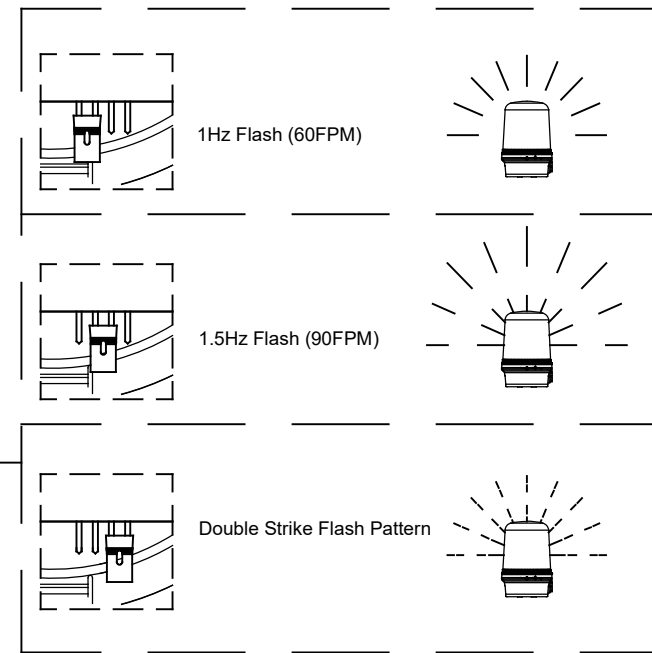
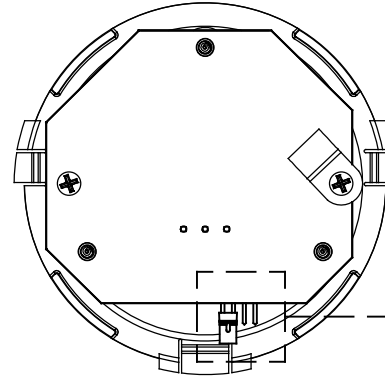
D112-00-001-IS Issue 2

Sheet 1 of 2
19/01/2023

Tel : +44 (0)20 8743 8880
www.e2s.com



DC UNIT MODE SELECTION



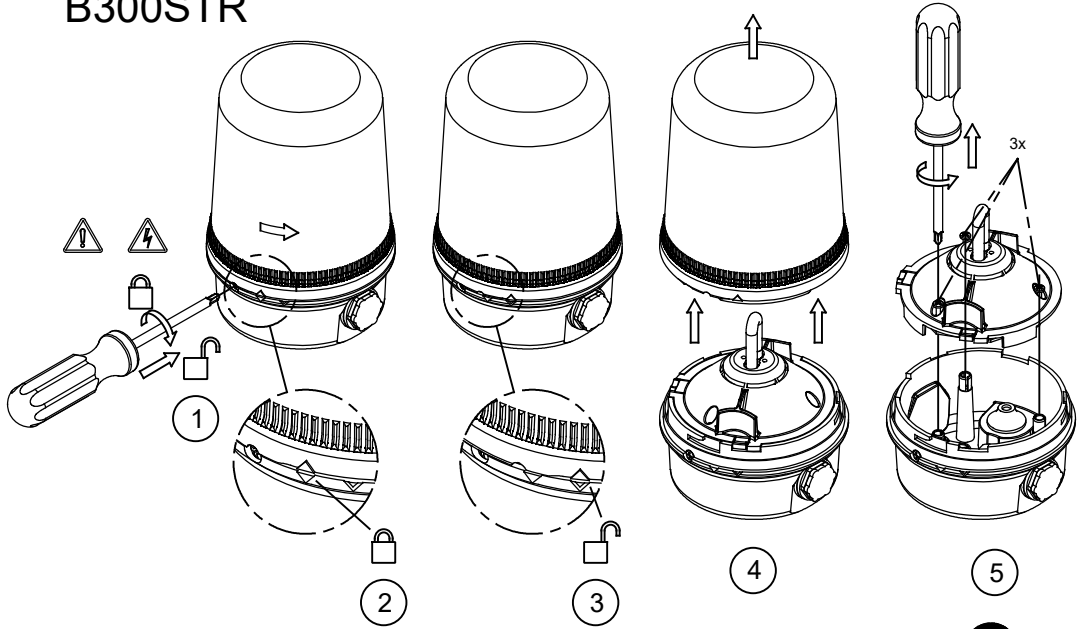
⚠ ATTENTION: Installation must be carried out by an electrician in compliance with the latest codes and regulations.

⚠ ATTENTION: Disconnect from power source before installation or service to prevent electric shock.

⚠ ATTENTION: On strobe beacons allow a minimum of 2 minutes for hazardous high voltage to discharge from unit.

⚠ ATTENTION: Lens on unit will be hot allow to cool prior to removal.

3 SPECTRA B300STR



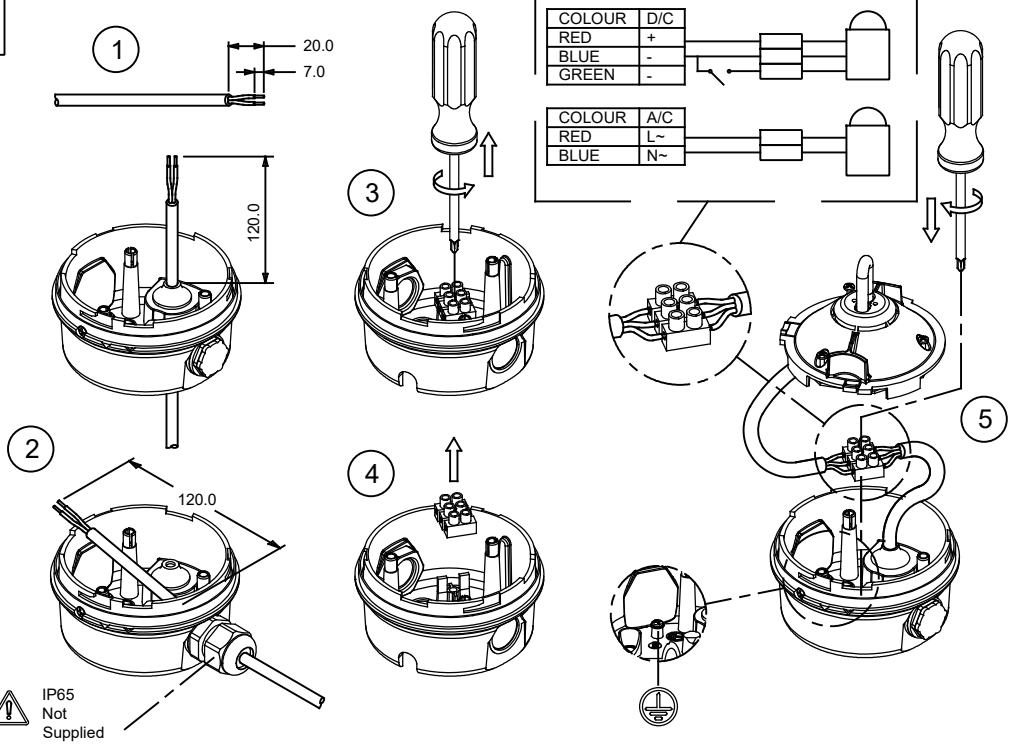
D112-00-001-IS Issue 2

Sheet 2 of 2
19/01/2023

Tel: +44 (0)20 8743 8880
www.e2s.com

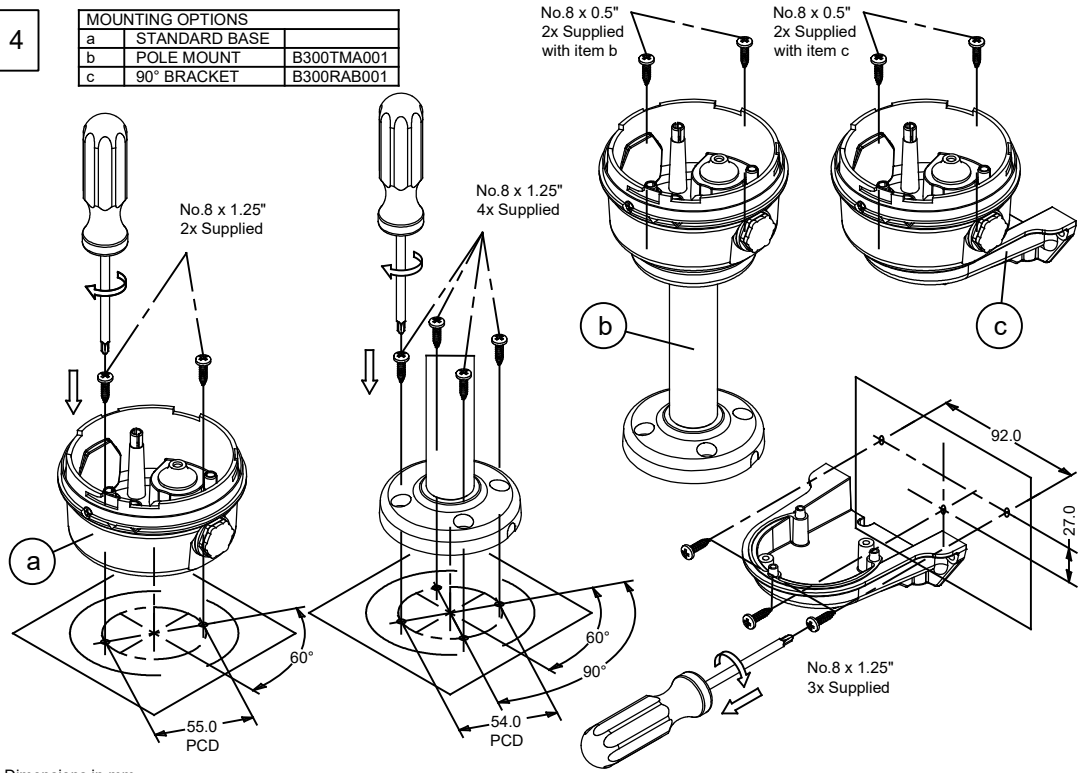


5



4

MOUNTING OPTIONS	
a	STANDARD BASE
b	POLE MOUNT
c	90° BRACKET



Dimensions in mm

6

