

1

SPECTRA B400SND

Sounder
 110 dB(A) Output Sounder
 IP Rating: IP65
 Temp: -25°C to +50°C
 Unit weight: 460g
 CE, UKCA



Dimensions : Ø140 x 120mm
 2.5mm² terminals
 Cable entry: 1 x 5-7mm push through grommet
 2 x M20 cable entry (IP65)

Order code	Voltage	Current
B400SND030G	10-30V DC/AC	105mA (24V DC)
B400SND230G	40-260V DC/AC	68mA (48V AC 50Hz)

Multi-unit connection possible using connector supplied
 B450 and B350 units are interconnectable

D129-00-001-IS Issue 1

Sheet 1 of 2
 19/01/2023

Tel : +44 (0)20 8743 8880
 www.e2s.com

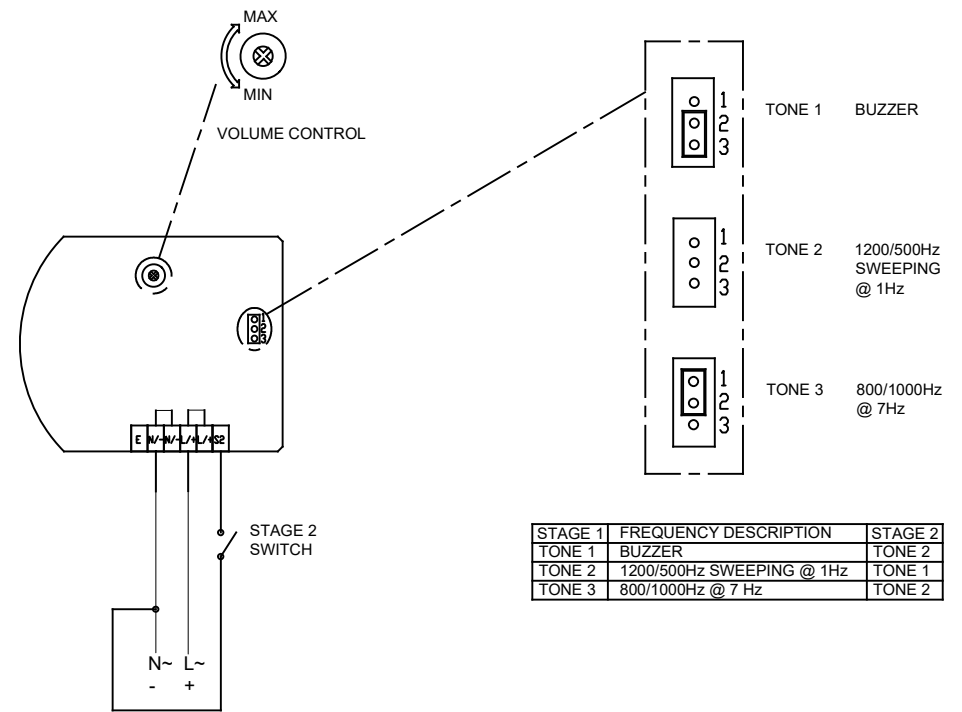


2

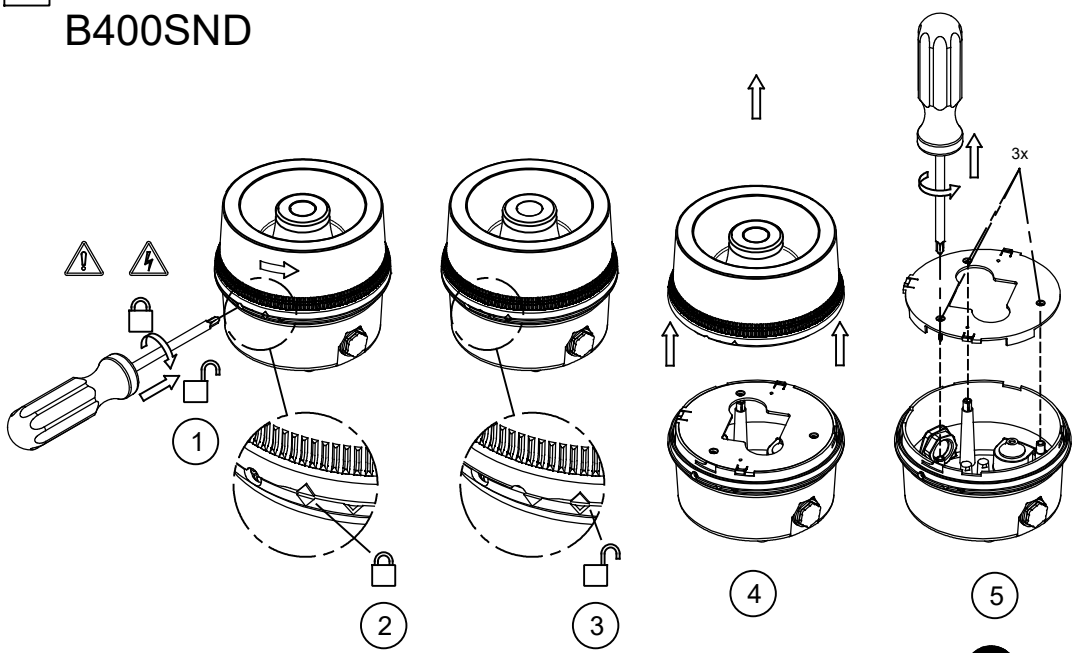
ATTENTION: Installation must be carried out by an electrician in compliance with the latest codes and regulations.

ATTENTION: Disconnect from power source before installation or service to prevent electric shock.

3



4 SPECTRA B400SND



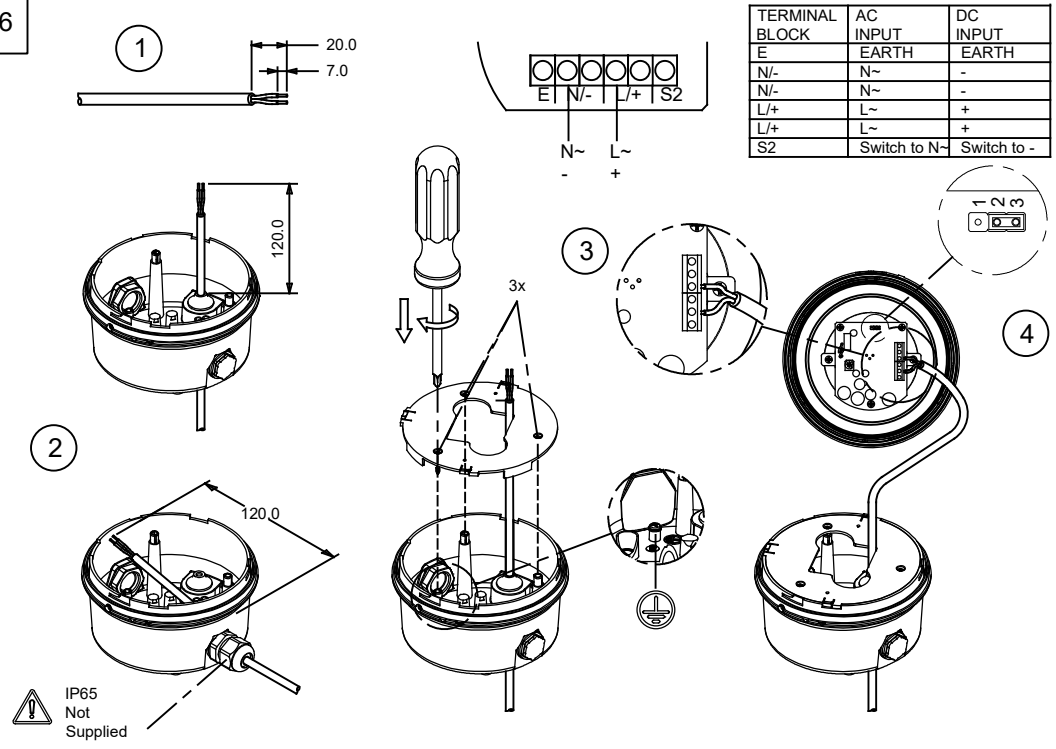
D129-00-001-IS Issue 1

Sheet 2 of 2
19/01/2023

Tel : +44 (0)20 8743 8880
www.e2s.com

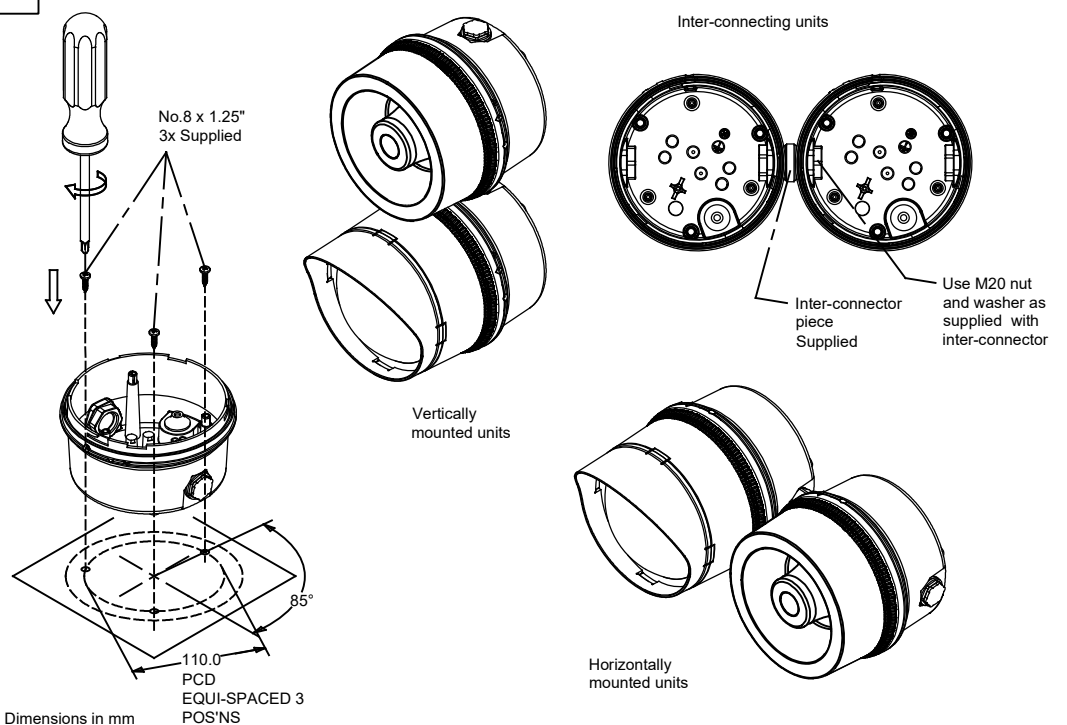


6



IP65
Not
Supplied

5



7

