

A	ISSUE	MOD No.	INITIAL/DATE	A
	1		INTRODUCTION RNP 25-04-2022	
	2		Added LED -L & -C units. Updated temperature ratings. Added Sheet 2. MA 29-08-2023	



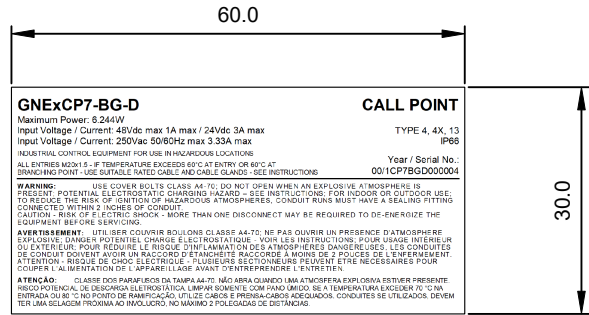
<p>60.0</p> <p>30.0</p>	<p>GNExCP7-BG-S CALL POINT</p> <p>Maximum Power: 3.122W Input Voltage / Current: 48Vdc max 1A max / 24Vdc 3A max TYPE 4, 4X, 13 IP66</p> <p>INDUSTRIAL CONTROL EQUIPMENT FOR USE IN HAZARDOUS LOCATIONS Year / Serial No. 00/1CP7BGSS00000</p> <p>WARNING: USE COVER BOLTS CLASS A4-70. DO NOT OPEN WHEN AN EXPLOSIVE ATMOSPHERE IS PRESENT. POTENTIAL ELECTROSTATIC CHARGE HAZARD - SEE INSTRUCTIONS FOR INDOOR OR OUTDOOR USE. TO REDUCE THE RISK OF IGNITION OF HAZARDOUS ATMOSPHERES, CONDUIT RUNS MUST HAVE A SEALING FITTING CONNECTED WITHIN 2 INCHES OF CONDUIT. CAUTION - RISK OF ELECTRIC SHOCK - MORE THAN ONE DISCONNECT MAY BE REQUIRED TO DE-ENERGIZE THE EQUIPMENT BEFORE SERVICING.</p> <p>AVERTISSEMENT: UTILISER COUVRES BOUTONS CLASSE A4-70. NE PAS OUVRIRE EN PRESENCE D'ATMOSPHERE EXPLOSIVE. DANGER POTENTIEL CHARGE ELECTROSTATIQUE - VOIR LES INSTRUCTIONS POUR USAGE INTERIEUR OU EXTERIEUR. POUR REDUIRE LE RISQUE D'IGNITION DES ATMOSPHERES DANGEREUSES, LES CONDUITS DE CONDUIT DOIVENT AVOIR UN RACCORDEUR ETANCHE A MOINS DE 2 POUCES DE L'APPAREILMENT D'ENTREE. ATTENTION - RISQUE DE CHOC ELECTRIQUE - PLUSIEURS SECTIONNAGES PEUVENT ETRE NECESSAIRES POUR COUPER L'ALIMENTATION DE L'APPAREILLAGE AVANT D'ENTREPRENDRE L'ENTRETIEN.</p> <p>ATENÇÃO: CLASSE DOS PARAFUSOS DA TAMPÃO: NE PAS OUVRIRE QUANDO UMA ATMOSPHERA EXPLOSIVA ESTIVER PRESENTE. RISCO POTENCIAL DE DESCARGA ELECTROSTATICA (LMPAR BOMENTE COM PANO UMIDO). SE A TEMPERATURA EXCEDER 70 °C NA REPARAÇÃO DE BORNAS, O RISCO DE CHOC E POTENCIALMENTE PERIGOSO. CONECTORES SE UTILIZADOS, DEVEM TER UMA SELAGEM PROXIMA AO INVOLUCRO, NO MAXIMO 2 POLEGADAS DE DISTANCIA.</p>	<p>GNExCP7-BG-S-L CALL POINT</p> <p>Maximum Power: 3.122W Input Voltage / Current: 48Vdc max 1A max / 24Vdc 3A max TYPE 4, 4X, 13 IP66</p> <p>INDUSTRIAL CONTROL EQUIPMENT FOR USE IN HAZARDOUS LOCATIONS Year / Serial No. 00/1CP7BGSS00000</p> <p>WARNING: USE COVER BOLTS CLASS A4-70. DO NOT OPEN WHEN AN EXPLOSIVE ATMOSPHERE IS PRESENT. POTENTIAL ELECTROSTATIC CHARGE HAZARD - SEE INSTRUCTIONS FOR INDOOR OR OUTDOOR USE. TO REDUCE THE RISK OF IGNITION OF HAZARDOUS ATMOSPHERES, CONDUIT RUNS MUST HAVE A SEALING FITTING CONNECTED WITHIN 2 INCHES OF CONDUIT. CAUTION - RISK OF ELECTRIC SHOCK - MORE THAN ONE DISCONNECT MAY BE REQUIRED TO DE-ENERGIZE THE EQUIPMENT BEFORE SERVICING.</p> <p>AVERTISSEMENT: UTILISER COUVRES BOUTONS CLASSE A4-70. NE PAS OUVRIRE EN PRESENCE D'ATMOSPHERE EXPLOSIVE. DANGER POTENTIEL CHARGE ELECTROSTATIQUE - VOIR LES INSTRUCTIONS POUR USAGE INTERIEUR OU EXTERIEUR. POUR REDUIRE LE RISQUE D'IGNITION DES ATMOSPHERES DANGEREUSES, LES CONDUITS DE CONDUIT DOIVENT AVOIR UN RACCORDEUR ETANCHE A MOINS DE 2 POUCES DE L'APPAREILMENT D'ENTREE. ATTENTION - RISQUE DE CHOC ELECTRIQUE - PLUSIEURS SECTIONNAGES PEUVENT ETRE NECESSAIRES POUR COUPER L'ALIMENTATION DE L'APPAREILLAGE AVANT D'ENTREPRENDRE L'ENTRETIEN.</p> <p>ATENÇÃO: CLASSE DOS PARAFUSOS DA TAMPÃO: NE PAS OUVRIRE QUANDO UMA ATMOSPHERA EXPLOSIVA ESTIVER PRESENTE. RISCO POTENCIAL DE DESCARGA ELECTROSTATICA (LMPAR BOMENTE COM PANO UMIDO). SE A TEMPERATURA EXCEDER 70 °C NA REPARAÇÃO DE BORNAS, O RISCO DE CHOC E POTENCIALMENTE PERIGOSO. CONECTORES SE UTILIZADOS, DEVEM TER UMA SELAGEM PROXIMA AO INVOLUCRO, NO MAXIMO 2 POLEGADAS DE DISTANCIA.</p>	<p>GNExCP7-BG-S-C CALL POINT</p> <p>Maximum Power: 3.122W Input Voltage / Current: 48Vdc max 20mA max TYPE 4, 4X, 13 IP66</p> <p>INDUSTRIAL CONTROL EQUIPMENT FOR USE IN HAZARDOUS LOCATIONS Year / Serial No. 00/1CP7BGSS00002</p> <p>WARNING: USE COVER BOLTS CLASS A4-70. DO NOT OPEN WHEN AN EXPLOSIVE ATMOSPHERE IS PRESENT. POTENTIAL ELECTROSTATIC CHARGE HAZARD - SEE INSTRUCTIONS FOR INDOOR OR OUTDOOR USE. TO REDUCE THE RISK OF IGNITION OF HAZARDOUS ATMOSPHERES, CONDUIT RUNS MUST HAVE A SEALING FITTING CONNECTED WITHIN 2 INCHES OF CONDUIT. CAUTION - RISK OF ELECTRIC SHOCK - MORE THAN ONE DISCONNECT MAY BE REQUIRED TO DE-ENERGIZE THE EQUIPMENT BEFORE SERVICING.</p> <p>AVERTISSEMENT: UTILISER COUVRES BOUTONS CLASSE A4-70. NE PAS OUVRIRE EN PRESENCE D'ATMOSPHERE EXPLOSIVE. DANGER POTENTIEL CHARGE ELECTROSTATIQUE - VOIR LES INSTRUCTIONS POUR USAGE INTERIEUR OU EXTERIEUR. POUR REDUIRE LE RISQUE D'IGNITION DES ATMOSPHERES DANGEREUSES, LES CONDUITS DE CONDUIT DOIVENT AVOIR UN RACCORDEUR ETANCHE A MOINS DE 2 POUCES DE L'APPAREILMENT D'ENTREE. ATTENTION - RISQUE DE CHOC ELECTRIQUE - PLUSIEURS SECTIONNAGES PEUVENT ETRE NECESSAIRES POUR COUPER L'ALIMENTATION DE L'APPAREILLAGE AVANT D'ENTREPRENDRE L'ENTRETIEN.</p> <p>ATENÇÃO: CLASSE DOS PARAFUSOS DA TAMPÃO: NE PAS OUVRIRE QUANDO UMA ATMOSPHERA EXPLOSIVA ESTIVER PRESENTE. RISCO POTENCIAL DE DESCARGA ELECTROSTATICA (LMPAR BOMENTE COM PANO UMIDO). SE A TEMPERATURA EXCEDER 70 °C NA REPARAÇÃO DE BORNAS, O RISCO DE CHOC E POTENCIALMENTE PERIGOSO. CONECTORES SE UTILIZADOS, DEVEM TER UMA SELAGEM PROXIMA AO INVOLUCRO, NO MAXIMO 2 POLEGADAS DE DISTANCIA.</p>
-------------------------	---	---	--

<p>GNExCP7-BG-S PRODUCT LABEL 1</p>	<p>GNExCP7-BG-S-L PRODUCT LABEL 1</p>	<p>GNExCP7-BG-S-C PRODUCT LABEL 1</p>

<p>GNExCP7-BG-S PRODUCT LABEL 2</p>	<p>GNExCP7-BG-S-L PRODUCT LABEL 2</p>	<p>GNExCP7-BG-S-C PRODUCT LABEL 2</p>

DRAWING TO BS8888:2000 GEOMETRIC TOLERANCES TO ISO1101:1983 LINEAR DIMENSIONAL TOLS +/-0.35mm ANGULAR DIMENSIONAL TOLS +/-2 deg	DRAWN R.N.POTTS DATE 25-04-2022	DATE 25-04-2022	SURFACE FINISH	WEIGHT (Kg)	THIS DRAWING AND ANY INFORMATION OR DESCRIPTIVE MATTER THEREIN IS COMMUNICATED IN CONFIDENCE AND IS THE COPYRIGHT PROPERTY OF EUROPEAN SAFETY SYSTEMS LTD. NEITHER THE WHOLE OR ANY EXTRACT MAY BE DISCLOSED, LOANED, COPIED OR USED FOR MANUFACTURING OR TENDERING PURPOSES WITHOUT THEIR WRITTEN CONSENT.	 EUROPEAN SAFETY SYSTEMS LTD IMPRESS HOUSE MANSELL ROAD ACTON LONDON W3 7QH WWW.E2S.COM	ALL DIMENSIONS IN MM IF IN DOUBT, ASK - DO NOT SCALE	 A3					
									CHECKED D.HOWGILL DATE 25-04-2022	MATERIAL	TITLE GNEx CP7 BG BREAK GLASS OPTION A1 CALL POINT PRODUCT LABEL		
									APPROVED R.N.POTTS DATE 25-04-2022	ALTERNATIVE MATERIAL	SCALE 1:1	SHEET 1 of 2	DRAWING NUMBER D202-09-011

	1	2	3	4	5	6	7	8	9	10	
A									ISSUE	MOD No.	INITIAL/DATE
									1		INTRODUCTION RNP 25-04-2022
B									2		Added LED -L & -C units. Updated temperature ratings. Added Sheet 2. MA 29-08-2023
C											
D											
E											
F											



GNExCP7-BG-D **CALL POINT**
 Maximum Power: 6.244W TYPE 4, 4X, 13
 Input Voltage / Current: 48Vdc max 1A max / 24Vdc 3A max IP66
 Input Voltage / Current: 250Vac 50/60Hz max 3.35A max
 INDUSTRIAL CONTROL EQUIPMENT FOR USE IN HAZARDOUS LOCATIONS
 Year / Serial No.:
 00/1CF7BGD000001

WARNING: USE COVER BOLTS CLASS A4-70. DO NOT OPEN WHEN AN EXPLOSIVE ATMOSPHERE IS PRESENT. POTENTIAL ELECTROSTATIC CHARGES HAZARDOUS - SEE INSTRUCTIONS. FOR INDOOR OR OUTDOOR USE, TO REDUCE THE RISK OF IGNITION OF HAZARDOUS ATMOSPHERES, CONDUIT RUNS MUST HAVE A SEALING FITTING CONNECTED WITHIN 2 INCHES OF CONDUIT.
CAUTION: RISK OF ELECTRIC SHOCK - MORE THAN ONE DISCONNECT MAY BE REQUIRED TO DE-ENERGIZE THE EQUIPMENT BEFORE SERVICING.

AVERTISSEMENT: UTILISER COUVRE-BOLTS CLASSE A4-70. NE PAS OUVRIRE EN PRESENCE D'ATMOSPHERE EXPLOSIVE. DANGER POTENTIEL CHARGES ELECTROSTATIQUES - VOIR LES INSTRUCTIONS. POUR USAGE INTERIEUR OU EXTERIEUR, POUR REDUIRE LE RISQUE D'INITIATION DES ATMOSPHERES DANGEREUSES, LES CONDUITES DE CONDUIT DOIVENT AVOIR UN RACCORD D'ETANCHEITE RACCORDE A MOINS DE 2 POUCES DE L'APPAREILMENT ATENDANT. RISQUE DE CHOC ELECTRIQUE - PLUSIEURS SECTIONNEURS PEUTENT ETRE NECESSAIRES POUR COUPER L'ALIMENTATION DE L'APPAREILLAGE AVANT D'ENTREPRENDRE L'ENTRETIEN.

ATENÇÃO: CLASSE DOS PARAFUSOS DE TAPAR A4-70. NÃO ABRA QUANDO HÁ ATMOSFERA EXPLOSIVA PRESENTE. RISCO POTENCIAL DE DESCARGA ELETRÓSTATICA. LAMPAR SOMENTE COM PANO ÚMIDO. SE A TEMPERATURA EXCEDER 70 °C NA ENTRADA DO CABO, NO PONTO DE RAMIFICAÇÃO, USE CARGO E PREVENÇA CARGAS ABRANDURAS. CONDUITOS DE UTILIZADOR DEVEM TER UMA SELAGEM PROXIMA AO INJULCRO, NO MÁXIMO 2 POLEGADAS DE DISTÂNCIA.

GNExCP7-BG-D
PRODUCT LABEL 1

DEMKO 19 ATEX 2101X
 IECEx ILS 19 0007X
 UL21UKEX2134X
 IEx 23.0091X

ATEX/IECEx/UKEx:
 Ex db IIC T8 Gb (Ta -55°C to +70°C)
 Ex db IIC T8 Gb (Ta -55°C to +65°C)
 Ex db IIC T80°C Db (Ta -55°C to +70°C)

NEC/CEC CLASS / DIV:
 Class I Div 2 Group ABCD T8 Ta -55°C to +60°C
 Class II Div 2 Group FG T5 Ta -55°C to +60°C
 Class III Div 2 Ta -55°C to +60°C

NEC CLASS ZONE:
 Class I Zone 1 AEx db IIC T8 Gb (Ta -55°C to +60°C)
 Zone 21 AEx db IIC T80°C Db (Ta -55°C to +60°C)

CEC CLASS ZONE:
 Ex db IIC T8 Gb (Ta -55°C to +60°C)
 Ex db IIC T80°C Db (Ta -55°C to +60°C)

Made in the United Kingdom
 Impress House, Mansell Road, London W3 7QH UK
 www.e2s.com

GNExCP7-BG-D
PRODUCT LABEL 2

GNExCP7-BG-D-L **CALL POINT**
 Maximum Power: 6.244W TYPE 4, 4X, 13
 Input Voltage / Current: 48Vdc max 1A max / 24Vdc 3A max IP66
 INDUSTRIAL CONTROL EQUIPMENT FOR USE IN HAZARDOUS LOCATIONS
 Year / Serial No.:
 00/1CF7BGD000016

WARNING: USE COVER BOLTS CLASS A4-70. DO NOT OPEN WHEN AN EXPLOSIVE ATMOSPHERE IS PRESENT. POTENTIAL ELECTROSTATIC CHARGES HAZARDOUS - SEE INSTRUCTIONS. FOR INDOOR OR OUTDOOR USE, TO REDUCE THE RISK OF IGNITION OF HAZARDOUS ATMOSPHERES, CONDUIT RUNS MUST HAVE A SEALING FITTING CONNECTED WITHIN 2 INCHES OF CONDUIT.
CAUTION: RISK OF ELECTRIC SHOCK - MORE THAN ONE DISCONNECT MAY BE REQUIRED TO DE-ENERGIZE THE EQUIPMENT BEFORE SERVICING.

AVERTISSEMENT: UTILISER COUVRE-BOLTS CLASSE A4-70. NE PAS OUVRIRE EN PRESENCE D'ATMOSPHERE EXPLOSIVE. DANGER POTENTIEL CHARGES ELECTROSTATIQUES - VOIR LES INSTRUCTIONS. POUR USAGE INTERIEUR OU EXTERIEUR, POUR REDUIRE LE RISQUE D'INITIATION DES ATMOSPHERES DANGEREUSES, LES CONDUITES DE CONDUIT DOIVENT AVOIR UN RACCORD D'ETANCHEITE RACCORDE A MOINS DE 2 POUCES DE L'APPAREILMENT ATENDANT. RISQUE DE CHOC ELECTRIQUE - PLUSIEURS SECTIONNEURS PEUTENT ETRE NECESSAIRES POUR COUPER L'ALIMENTATION DE L'APPAREILLAGE AVANT D'ENTREPRENDRE L'ENTRETIEN.

ATENÇÃO: CLASSE DOS PARAFUSOS DE TAPAR A4-70. NÃO ABRA QUANDO HÁ ATMOSFERA EXPLOSIVA PRESENTE. RISCO POTENCIAL DE DESCARGA ELETRÓSTATICA. LAMPAR SOMENTE COM PANO ÚMIDO. SE A TEMPERATURA EXCEDER 70 °C NA ENTRADA DO CABO, NO PONTO DE RAMIFICAÇÃO, USE CARGO E PREVENÇA CARGAS ABRANDURAS. CONDUITOS DE UTILIZADOR DEVEM TER UMA SELAGEM PROXIMA AO INJULCRO, NO MÁXIMO 2 POLEGADAS DE DISTÂNCIA.

GNExCP7-BG-D-L
PRODUCT LABEL 1

DEMKO 19 ATEX 2101X
 IECEx ILS 19 0007X
 UL21UKEX2134X
 IEx 23.0091X

ATEX/IECEx/UKEx:
 Ex db IIC T8 Gb (Ta -55°C to +70°C)
 Ex db IIC T8 Gb (Ta -55°C to +65°C)
 Ex db IIC T8 Gb (Ta -55°C to +60°C)
 Ex db IIC T100°C Db (Ta -55°C to +70°C)

NEC/CEC CLASS / DIV:
 Class I Div 2 Group ABCD T8 Ta -55°C to +60°C
 Class II Div 2 Group FG T5 Ta -55°C to +60°C
 Class III Div 2 Ta -55°C to +60°C

NEC CLASS ZONE:
 Class I Zone 1 AEx db IIC T8 Gb (Ta -55°C to +60°C)
 Zone 21 AEx db IIC T80°C Db (Ta -55°C to +60°C)

CEC CLASS ZONE:
 Ex db IIC T8 Gb (Ta -55°C to +60°C)
 Ex db IIC T80°C Db (Ta -55°C to +60°C)

Made in the United Kingdom
 Impress House, Mansell Road, London W3 7QH UK
 www.e2s.com

GNExCP7-BG-D-L
PRODUCT LABEL 2

GNExCP7-BG-D-C **CALL POINT**
 Maximum Power: 6.244W TYPE 4, 4X, 13
 Input Voltage / Current: 48Vdc max 20mA max IP66
 INDUSTRIAL CONTROL EQUIPMENT FOR USE IN HAZARDOUS LOCATIONS
 Year / Serial No.:
 00/1CF7BGD000020

WARNING: USE COVER BOLTS CLASS A4-70. DO NOT OPEN WHEN AN EXPLOSIVE ATMOSPHERE IS PRESENT. POTENTIAL ELECTROSTATIC CHARGES HAZARDOUS - SEE INSTRUCTIONS. FOR INDOOR OR OUTDOOR USE, TO REDUCE THE RISK OF IGNITION OF HAZARDOUS ATMOSPHERES, CONDUIT RUNS MUST HAVE A SEALING FITTING CONNECTED WITHIN 2 INCHES OF CONDUIT.
CAUTION: RISK OF ELECTRIC SHOCK - MORE THAN ONE DISCONNECT MAY BE REQUIRED TO DE-ENERGIZE THE EQUIPMENT BEFORE SERVICING.

AVERTISSEMENT: UTILISER COUVRE-BOLTS CLASSE A4-70. NE PAS OUVRIRE EN PRESENCE D'ATMOSPHERE EXPLOSIVE. DANGER POTENTIEL CHARGES ELECTROSTATIQUES - VOIR LES INSTRUCTIONS. POUR USAGE INTERIEUR OU EXTERIEUR, POUR REDUIRE LE RISQUE D'INITIATION DES ATMOSPHERES DANGEREUSES, LES CONDUITES DE CONDUIT DOIVENT AVOIR UN RACCORD D'ETANCHEITE RACCORDE A MOINS DE 2 POUCES DE L'APPAREILMENT ATENDANT. RISQUE DE CHOC ELECTRIQUE - PLUSIEURS SECTIONNEURS PEUTENT ETRE NECESSAIRES POUR COUPER L'ALIMENTATION DE L'APPAREILLAGE AVANT D'ENTREPRENDRE L'ENTRETIEN.

ATENÇÃO: CLASSE DOS PARAFUSOS DE TAPAR A4-70. NÃO ABRA QUANDO HÁ ATMOSFERA EXPLOSIVA PRESENTE. RISCO POTENCIAL DE DESCARGA ELETRÓSTATICA. LAMPAR SOMENTE COM PANO ÚMIDO. SE A TEMPERATURA EXCEDER 70 °C NA ENTRADA DO CABO, NO PONTO DE RAMIFICAÇÃO, USE CARGO E PREVENÇA CARGAS ABRANDURAS. CONDUITOS DE UTILIZADOR DEVEM TER UMA SELAGEM PROXIMA AO INJULCRO, NO MÁXIMO 2 POLEGADAS DE DISTÂNCIA.

GNExCP7-BG-D-C
PRODUCT LABEL 1

DEMKO 19 ATEX 2101X
 IECEx ILS 19 0007X
 UL21UKEX2134X
 IEx 23.0091X

ATEX/IECEx/UKEx:
 Ex db IIC T8 Gb (Ta -55°C to +70°C)
 Ex db IIC T8 Gb (Ta -55°C to +65°C)
 Ex db IIC T8 Gb (Ta -55°C to +60°C)
 Ex db IIC T100°C Db (Ta -55°C to +70°C)

NEC/CEC CLASS / DIV:
 Class I Div 2 Group ABCD T8 Ta -55°C to +60°C
 Class II Div 2 Group FG T5 Ta -55°C to +60°C
 Class III Div 2 Ta -55°C to +60°C

NEC CLASS ZONE:
 Class I Zone 1 AEx db IIC T8 Gb (Ta -55°C to +60°C)
 Zone 21 AEx db IIC T80°C Db (Ta -55°C to +60°C)

CEC CLASS ZONE:
 Ex db IIC T8 Gb (Ta -55°C to +60°C)
 Ex db IIC T80°C Db (Ta -55°C to +60°C)

Made in the United Kingdom
 Impress House, Mansell Road, London W3 7QH UK
 www.e2s.com

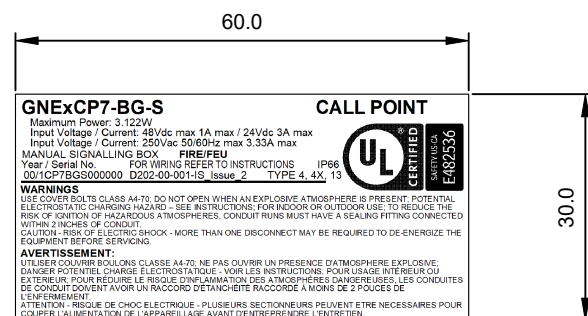
GNExCP7-BG-D-C
PRODUCT LABEL 2

G	DRAWING TO BS8888:2000 GEOMETRIC TOLERANCES TO ISO1101:1983 LINEAR DIMENSIONAL TOLS +/-0.35mm ANGULAR DIMENSIONAL TOLS +/-2 deg	DRAWN R.N.POTTS	DATE 25-04-2022	SURFACE FINISH	WEIGHT (Kg)	THIS DRAWING AND ANY INFORMATION OR DESCRIPTIVE MATTER THEREIN IS COMMUNICATED IN CONFIDENCE AND IS THE COPYRIGHT PROPERTY OF EUROPEAN SAFETY SYSTEMS LTD. NEITHER THE WHOLE OR ANY EXTRACT MAY BE DISCLOSED, LOANED, COPIED OR USED FOR MANUFACTURING OR TENDERING PURPOSES WITHOUT THEIR WRITTEN CONSENT.	EUROPEAN SAFETY SYSTEMS LTD IMPRESS HOUSE MANSELL ROAD ACTON LONDON W3 7QH WWW.E2S.COM	ALL DIMENSIONS IN MM		A3
	STANDARDS GNEx CP7 CALL POINTS	CHECKED D.HOWGILL	DATE 25-04-2022	MATERIAL	TITLE GNEx CP7 BG BREAK GLASS OPTION A1 CALL POINT PRODUCT LABEL			SCALE 1:1	SHEET 2 of 2	DRAWING NUMBER D202-09-011
	APPROVED R.N.POTTS	DATE 25-04-2022	ALTERNATIVE MATERIAL	EUROPEAN SAFETY SYSTEMS LTD. AS PER LATEST DATE OF ISSUE SHOWN ABOVE						

A

ISSUE	MOD No.	INITIAL/DATE
1		INTRODUCTION RNP 25-04-2022
2		Corrected Warnings section. Updated instructions issue no. MA 30-08-2023

B



GNExCP7-BG-S
PRODUCT LABEL 1
UL38

NEC/IEC CLASS / DIV:
 Class I Div 2 Group ABCD T8 Ta -55°C to +70°C
 Class II Div 2 Group FG T4 Ta -55°C to +70°C
 Class III Div 1 & 2 Ta -55°C to +70°C

DEMKO 19 ATEX 2101X
 IECEx ULD 19.0007X
 UL21UKEX2134X

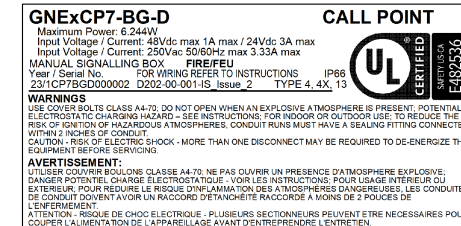
ATEX/IECEx/UKEX:
 Ex db IIC T8 Gb (Ta -55°C to +70°C)
 Ex tb IIC T8°C Db (Ta -55°C to +70°C)

UK 0518 CE 2813

ALL ENTRIES MD01 5 - IF TEMPERATURE EXCEEDS 60°C AT ENTRY OR 80°C AT BRANCHING POINT - USE SUITABLE RATED CABLE AND CABLE GLANDS - SEE INSTRUCTIONS

European Safety Systems Ltd. Made in United Kingdom Impress House, Mansell Road London W3 7QH UK www.e2s.com

GNExCP7-BG-S
PRODUCT LABEL 2
UL38



GNExCP7-BG-D
PRODUCT LABEL 1
UL38

NEC/IEC CLASS / DIV:
 Class I Div 2 Group ABCD T5 Ta -55°C to +70°C
 Class I Div 2 Group ABCD T6 Ta -55°C to +85°C
 Class II Div 2 Group FG T4 Ta -55°C to +70°C

DEMKO 19 ATEX 2101X
 IECEx ULD 19.0007X
 UL21UKEX2134X

ATEX/IECEx/UKEX:
 Ex db IIC T5 Gb (Ta -55°C to +70°C)
 Ex db IIC T6 Gb (Ta -55°C to +85°C)
 Ex tb IIC T6°C Db (Ta -55°C to +70°C)

UK 0518 CE 2813

ALL ENTRIES MD01 5 - IF TEMPERATURE EXCEEDS 60°C AT ENTRY OR 80°C AT BRANCHING POINT - USE SUITABLE RATED CABLE AND CABLE GLANDS - SEE INSTRUCTIONS

European Safety Systems Ltd. Made in United Kingdom Impress House, Mansell Road London W3 7QH UK www.e2s.com

GNExCP7-BG-D
PRODUCT LABEL 2
UL38

C

D

E

F

DRAWING TO BS8888:2000
 GEOMETRIC TOLERANCES TO ISO1101:1983
 LINEAR DIMENSIONAL TOLS +/-0.35mm
 ANGULAR DIMENSIONAL TOLS +/-2 deg

STANDARDS
GNEx CP7
CALL POINTS

DRAWN	DATE	SURFACE FINISH	WEIGHT (Kg)
R.N.POTTS	25-04-2022		
CHECKED	DATE	MATERIAL	
D.HOWGILL	25-04-2022		
APPROVED	DATE	ALTERNATIVE MATERIAL	
R.N.POTTS	25-04-2022		

THIS DRAWING AND ANY INFORMATION OR DESCRIPTIVE MATTER THEREIN IS COMMUNICATED IN CONFIDENCE AND IS THE COPYRIGHT PROPERTY OF EUROPEAN SAFETY SYSTEMS LTD. NEITHER THE WHOLE OR ANY EXTRACT MAY BE DISCLOSED, LOANED, COPIED OR USED FOR MANUFACTURING OR TENDERING PURPOSES WITHOUT THEIR WRITTEN CONSENT.

EUROPEAN SAFETY SYSTEMS LTD.
 AS PER LATEST DATE OF ISSUE SHOWN ABOVE

e2s
 warning signals

EUROPEAN SAFETY SYSTEMS LTD
 IMPRESS HOUSE
 MANSELL ROAD
 ACTON
 LONDON W3 7QH
 WWW.E2S.COM

ALL DIMENSIONS IN MM
 IF IN DOUBT, ASK - DO NOT SCALE

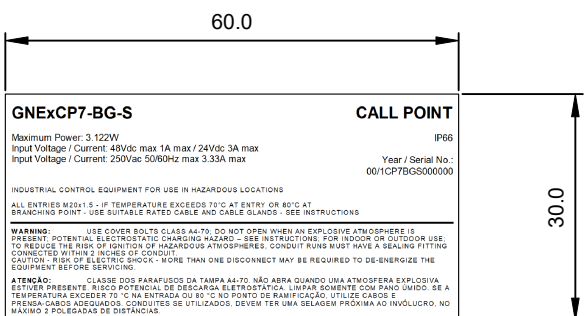
TITLE **GNEx CP7 BG BREAK GLASS OPTION F1**
FIRE CALL POINT PRODUCT LABEL

SCALE 1:1 SHEET 1 of 1 DRAWING NUMBER **D202-09-001**

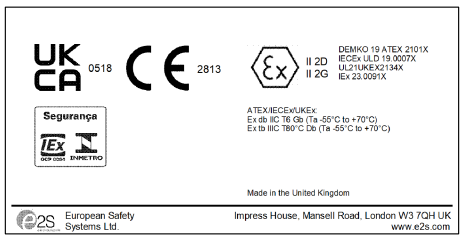
European Safety Systems Ltd. Made in United Kingdom Impress House, Mansell Road London W3 7QH UK www.e2s.com

G

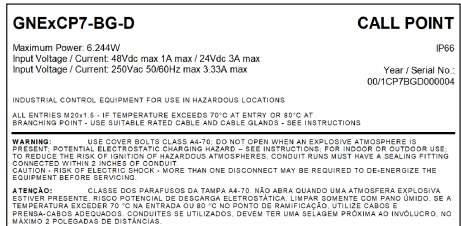
	1	2	3	4	5	6	7	8	9	10
								ISSUE	MOD No.	INITIAL/DATE
A								1		INTRODUCTION MA 13-09-2023
B										
C										
D										
E										
F										



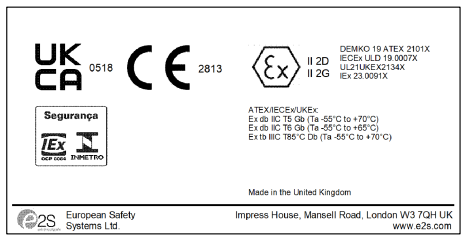
**GNExCP7-BG-S (WITH MODULE)
PRODUCT LABEL 1**



**GNExCP7-BG-S (WITH MODULE)
PRODUCT LABEL 2**



**GNExCP7-BG-D (WITH MODULE)
PRODUCT LABEL 1**



**GNExCP7-BG-D (WITH MODULE)
PRODUCT LABEL 2**

DRAWING TO BS8888:2000 GEOMETRIC TOLERANCES TO ISO1101:1983 LINEAR DIMENSIONAL TOLS +/-0.35mm ANGULAR DIMENSIONAL TOLS +/-2 deg	DRAWN	DATE	SURFACE FINISH	WEIGHT (Kg)	THIS DRAWING AND ANY INFORMATION OR DESCRIPTIVE MATTER THEREIN IS COMMUNICATED IN CONFIDENCE AND IS THE COPYRIGHT PROPERTY OF EUROPEAN SAFETY SYSTEMS LTD. NEITHER THE WHOLE OR ANY EXTRACT MAY BE DISCLOSED, LOANED, COPIED OR USED FOR MANUFACTURING OR TENDERING PURPOSES WITHOUT THEIR WRITTEN CONSENT.	 EUROPEAN SAFETY SYSTEMS LTD IMPRESS HOUSE MANSELL ROAD ACTON LONDON W3 7QH WWW.E2S.COM	ALL DIMENSIONS IN MM			A3
	CHECKED	DATE					IF IN DOUBT, ASK - DO NOT SCALE			
	STANDARDS GNEx CP7 CALL POINTS	APPROVED	DATE	ALTERNATIVE MATERIAL			 EUROPEAN SAFETY SYSTEMS LTD. AS PER LATEST DATE OF ISSUE SHOWN ABOVE	TITLE GNEx CP7 BG BREAK GLASS CALL POINT WITH MODULE PRODUCT LABEL	SCALE 1:1	SHEET 1 of 1