

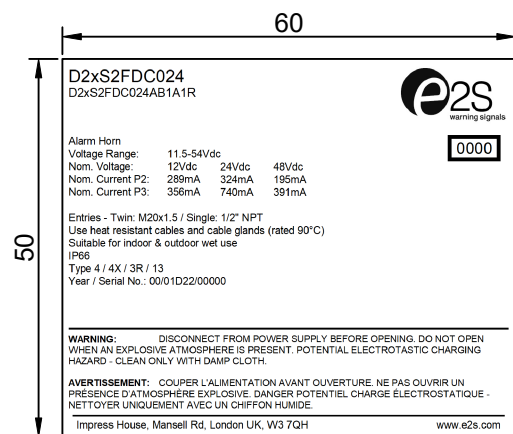
Notes:

1. For D2xS2H, replace 'F' with 'H' in part code
2. Refer to D252-09-011 for additional UL464A or UL464 product label (subject to model numbers described in th drawing)
3. Enclosure entries may differ depending on product options

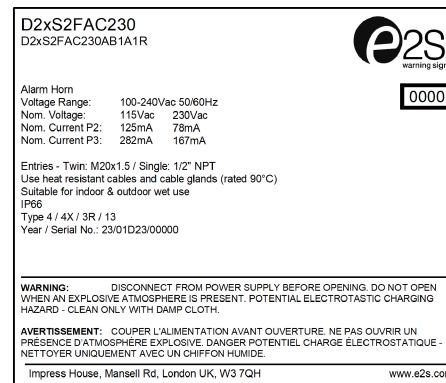
RELATED DRAWING

No modification permitted without reference to the "Authorised Person"

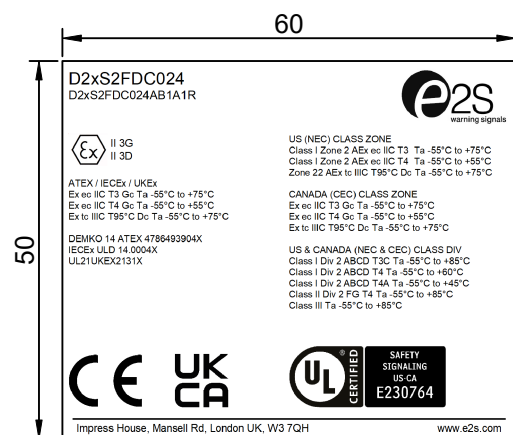
ISSUE	MOD No.	INITIAL/DATE
1		INTRODUCTION MA 30-10-2023



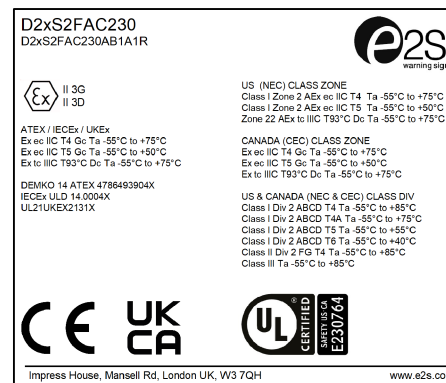
D2xS2FDC024  
Label 1



D2xS2FAC230  
Label 1



D2xS2FDC024  
Label 2



D2xS2FAC230  
Label 2

DRAWING TO BS8888:2000  
GEOMETRIC TOLERANCES TO ISO1101:1983  
LINEAR DIMENSIONAL TOLS +/-0.35mm  
ANGULAR DIMENSIONAL TOLS +/-2 deg

DRAWN	DATE	SURFACE FINISH	WEIGHT (Kg)
M.ABALOS	30-10-2023		
CHECKED	DATE	MATERIAL	
R.N.POTTS	30-10-2023	SEE NOTE	
APPROVED	DATE	ALTERNATIVE MATERIAL	
R.N.POTTS	30-10-2023		

STANDARDS  
D2x

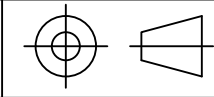
THIS DRAWING AND ANY INFORMATION OR DESCRIPTIVE MATTER THEREIN IS COMMUNICATED IN CONFIDENCE AND IS THE COPYRIGHT PROPERTY OF EUROPEAN SAFETY SYSTEMS LTD. NEITHER THE WHOLE OR ANY EXTRACT MAY BE DISCLOSED, LOANED, COPIED OR USED FOR MANUFACTURING OR TENDERING PURPOSES WITHOUT THEIR WRITTEN CONSENT.

© EUROPEAN SAFETY SYSTEMS LTD.  
AS PER LATEST DATE OF ISSUE SHOWN ABOVE



EUROPEAN SAFETY SYSTEMS LTD  
IMPRESS HOUSE  
MANSELL ROAD  
ACTON  
LONDON W3 7QH  
WWW.E2S.COM

ALL DIMENSIONS IN MM  
IF IN DOUBT, ASK -  
DO NOT SCALE



A3

TITLE D2xS2 SOUNDER PRODUCT LABELS

SCALE	SHEET	DRAWING NUMBER
1:1	1 of 1	D252-09-001