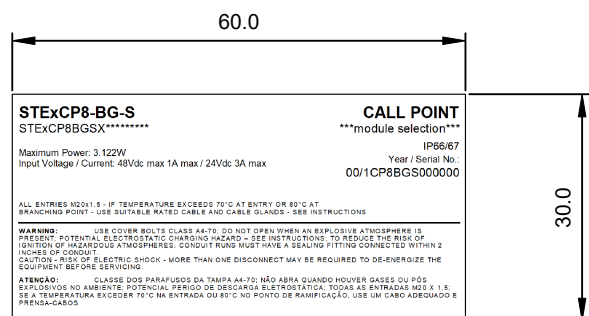
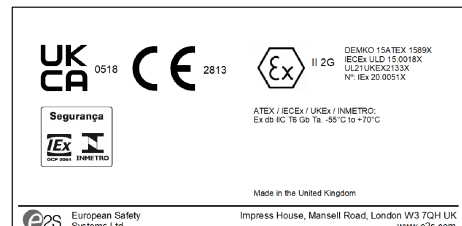


STExCP8 CALL POINT WITH ADDRESSABLE MODULE LABELS
 (see module instructions for electrical ratings specific to the module selected)

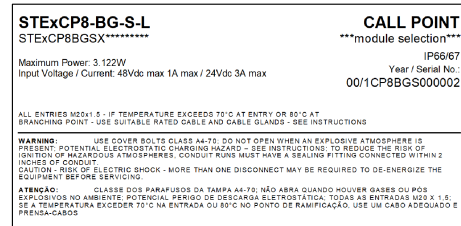
ISSUE	MOD No.	INITIAL/DATE
1		INTRODUCTION MA 17-01-2024



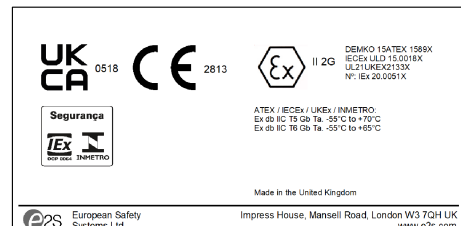
STExCP8-BG-S (WITH MODULE)
PRODUCT LABEL 1



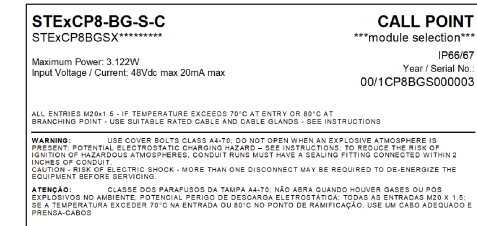
STExCP8-BG-S (WITH MODULE)
PRODUCT LABEL 2



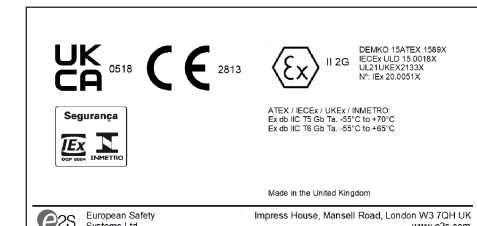
STExCP8-BG-S-L (WITH MODULE)
PRODUCT LABEL 1



STExCP8-BG-S-L (WITH MODULE)
PRODUCT LABEL 2



STExCP8-BG-S-C (WITH MODULE)
PRODUCT LABEL 1



STExCP8-BG-S-C (WITH MODULE)
PRODUCT LABEL 2

DRAWING TO BS8888:2000
 GEOMETRIC TOLERANCES TO ISO1101:1983
 LINEAR DIMENSIONAL TOLS +/-0.35mm
 ANGULAR DIMENSIONAL TOLS +/-2 deg

DRAWN	DATE
M.ABALOS	17-01-2024
CHECKED	DATE
R.N.POTTS	17-01-2024
APPROVED	DATE
R.N.POTTS	17-01-2024

SURFACE FINISH	WEIGHT (Kg)
MATERIAL	
ALTERNATIVE MATERIAL	

THIS DRAWING AND ANY INFORMATION OR DESCRIPTIVE MATTER THEREIN IS COMMUNICATED IN CONFIDENCE AND IS THE COPYRIGHT PROPERTY OF EUROPEAN SAFETY SYSTEMS LTD. NEITHER THE WHOLE OR ANY EXTRACT MAY BE DISCLOSED, LOANED, COPIED OR USED FOR MANUFACTURING OR TENDERING PURPOSES WITHOUT THEIR WRITTEN CONSENT.

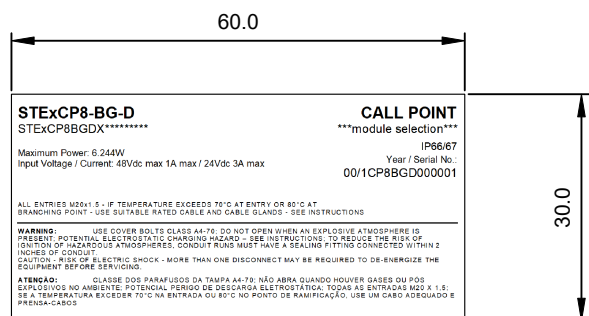
C EUROPEAN SAFETY SYSTEMS LTD.
 AS PER LATEST DATE OF ISSUE SHOWN ABOVE

e2s
 warning signals
 EUROPEAN SAFETY SYSTEMS LTD
 IMPRESS HOUSE
 MANSELL ROAD
 ACTON
 LONDON W3 7QH
 WWW.E2S.COM

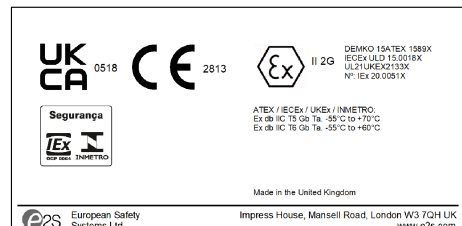
ALL DIMENSIONS IN MM		A3
IF IN DOUBT, ASK - DO NOT SCALE		
TITLE STEx CP8 BG BREAK GLASS CALL POINT WITH MODULE PRODUCT LABEL		
SCALE	SHEET	DRAWING NUMBER
1:1	1 of 2	D204-09-051

STExCP8 CALL POINT WITH ADDRESSABLE MODULE LABELS
 (see module instructions for electrical ratings specific to the module selected)

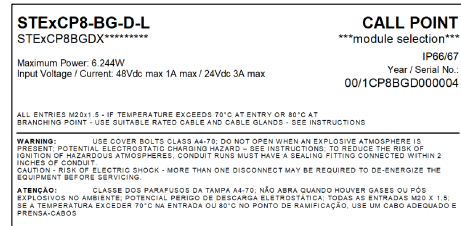
ISSUE	MOD No.	INITIAL/DATE
1		INTRODUCTION MA 17-01-2024



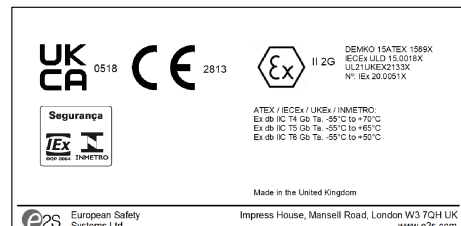
STExCP8-BG-D (WITH MODULE)
PRODUCT LABEL 1



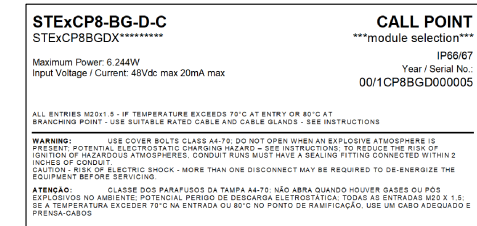
STExCP8-BG-D (WITH MODULE)
PRODUCT LABEL 2



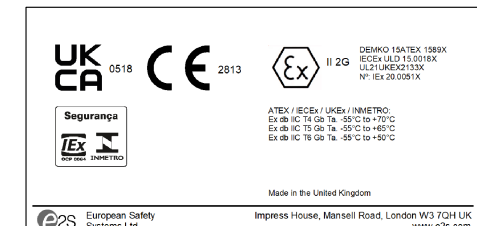
STExCP8-BG-D-L (WITH MODULE)
PRODUCT LABEL 1



STExCP8-BG-D-L (WITH MODULE)
PRODUCT LABEL 2



STExCP8-BG-D-C (WITH MODULE)
PRODUCT LABEL 1



STExCP8-BG-D-C (WITH MODULE)
PRODUCT LABEL 2

DRAWING TO BS8888:2000
 GEOMETRIC TOLERANCES TO ISO1101:1983
 LINEAR DIMENSIONAL TOLS +/-0.35mm
 ANGULAR DIMENSIONAL TOLS +/-2 deg

STANDARDS
STEx CP8
CALL POINTS

DRAWN	DATE
M.ABALOS	17-01-2024
CHECKED	DATE
R.N.POTTS	17-01-2024
APPROVED	DATE
R.N.POTTS	17-01-2024

SURFACE FINISH	WEIGHT (Kg)
MATERIAL	
ALTERNATIVE MATERIAL	

THIS DRAWING AND ANY INFORMATION OR DESCRIPTIVE MATTER THEREIN IS COMMUNICATED IN CONFIDENCE AND IS THE COPYRIGHT PROPERTY OF EUROPEAN SAFETY SYSTEMS LTD. NEITHER THE WHOLE OR ANY EXTRACT MAY BE DISCLOSED, LOANED, COPIED OR USED FOR MANUFACTURING OR TENDERING PURPOSES WITHOUT THEIR WRITTEN CONSENT.

EUROPEAN SAFETY SYSTEMS LTD.
 AS PER LATEST DATE OF ISSUE SHOWN ABOVE

EUROPEAN SAFETY SYSTEMS LTD
 IMPRESS HOUSE
 MANSELL ROAD
 ACTON
 LONDON W3 7QH
 WWW.E2S.COM

ALL DIMENSIONS IN MM IF IN DOUBT, ASK - DO NOT SCALE		A3
TITLE STEx CP8 BG BREAK GLASS CALL POINT WITH MODULE PRODUCT LABEL		
SCALE 1:1	SHEET 2 of 2	DRAWING NUMBER D204-09-051