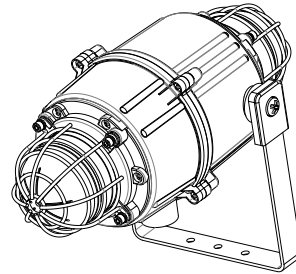
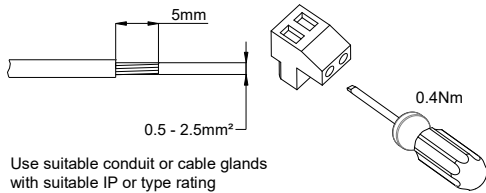


- IP67/66 & Type 4/4X/13
- -40°C to +66°C (-40°F to +151°F)
- 2Kg (4.4lb)
- CE, UKCA, EAC & Russian Maritime Register approved



Unit Type Code	Nominal Voltage	Voltage Range	Nominal LED Beacon Current Steady High	Nominal LED Beacon Current Steady Low	Nominal LED Beacon Current Steady Flashing 1Hz	Nominal Xenon Beacon Current
MCBLD2X05DC024	24 Vdc	20-28 Vdc	240mA	134mA	110mA	270mA
MCBLD2X05AC115	115 Vac	115 Vac ±10% 50/60Hz	95mA	78mA	90mA	140mA
MCBLD2X05AC230	230 Vac	230 Vac ±10% 50/60Hz	48mA	37mA	45mA	55mA



Attention: Installation must be carried out by an electrician in compliance with the latest codes and regulations.

Attention: L'installation doit être effectuée par un électricien conformément aux derniers codes et réglementations.

Achtung: Die Installation muss von einem Elektriker gemäß den neuesten Vorschriften und Bestimmungen durchgeführt werden.

Attenzione: L'installazione deve essere eseguita da un elettricista in conformità con i codici e le normative più recenti.

Atención: La instalación debe ser realizada por un electricista de acuerdo con los últimos códigos y regulaciones.

Atenção: A instalação deve ser realizada por um electricista de acordo com os códigos e regulamentos mais recentes.

Внимание: установка должна выполняться электриком в соответствии с последними нормами и правилами.

Attention: Disconnect from power source before installation or service to prevent electric shock

Attention: Débranchez-le de la source d'alimentation avant l'installation ou l'entretien pour éviter tout choc électrique.

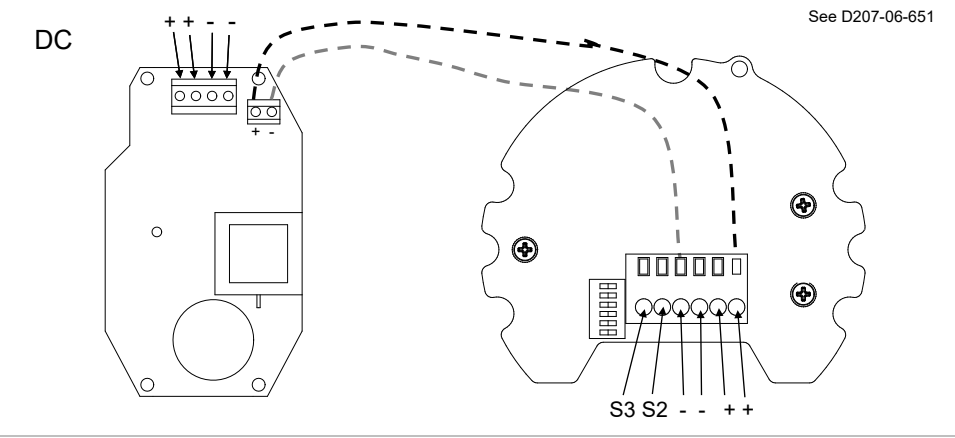
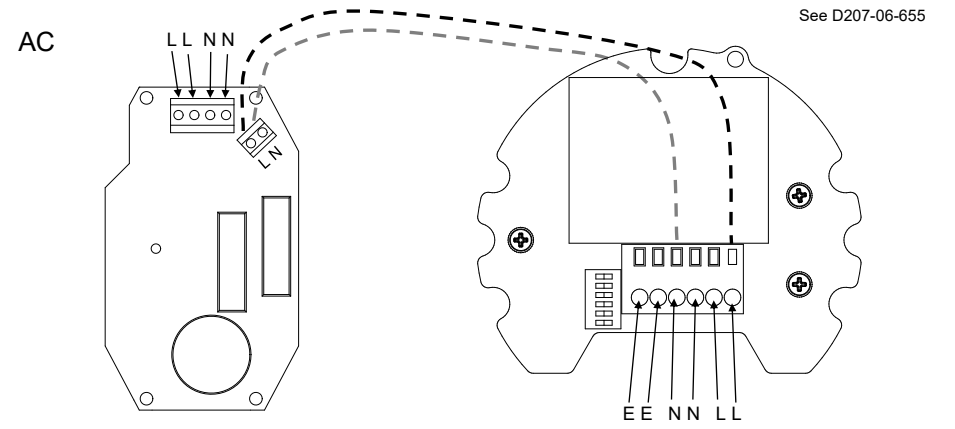
Achtung: Vor Installation oder Wartung von der Stromquelle trennen, um einen Stromschlag zu vermeiden.

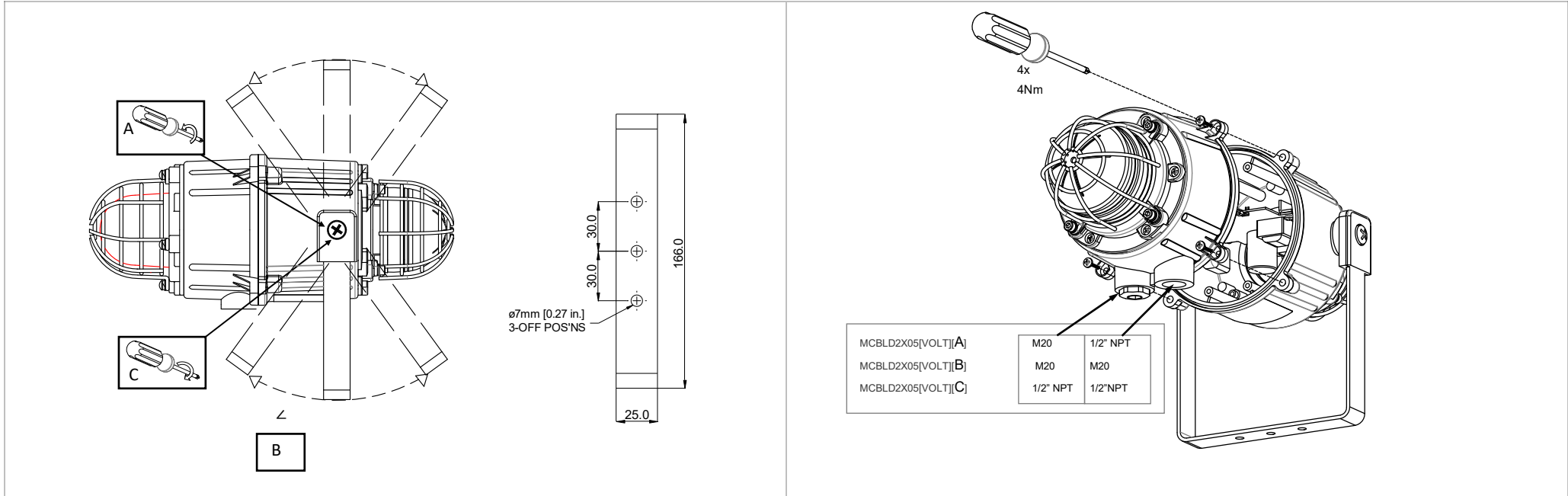
Attenzione: scollegare dall'alimentazione prima dell'installazione o dell'assistenza per evitare scosse elettriche.

Atención: desconéctelo de la fuente de alimentación antes de la instalación o el servicio para evitar descargas eléctricas.

Atenção: Desconecte da fonte de alimentação antes da instalação ou serviço para evitar choque elétrico

Внимание: отключите от источника питания перед установкой или обслуживанием, чтобы предотвратить поражение электрическим током.





FLASH PATTERN	S1 SETTING	S1 MODE (AC & DC)	S2 MODE (DC ONLY)	S3 MODE (DC ONLY)
1	000000		1Hz	3x
2	000001		1Hz	3x
3	100000	1Hz	2x	3x
4	101000	1.5Hz	2Hz	2x
5	010000	2Hz	3x	3x
6	110000	2x		3x
7	001000	3x	2Hz	2x

2x

200ms

3x

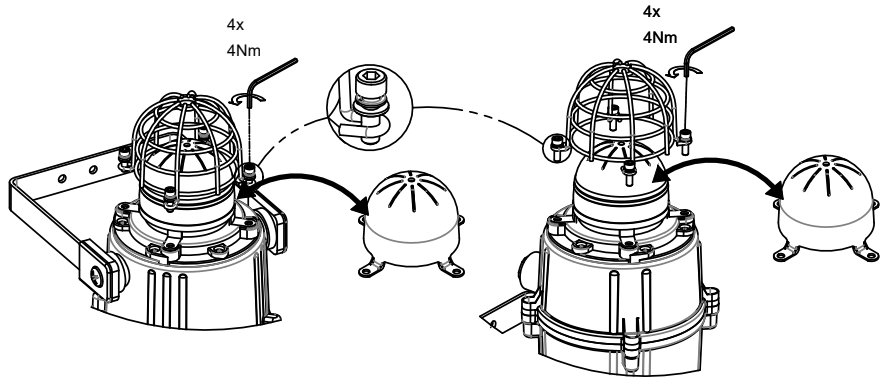
200ms

800ms

continuous high
 forte lumière continue
 dauerlicht hoch
 luce continua alta
 fuerte luz continua
 forte continuo
 яркий непрерывный свет

continuous low
 Faible lumière continue
 dauerlicht niedrig
 luce continua basso
 luz continua débil
 forte continuo
 слабый непрерывный свет

(ON = 1, OFF = 0)
 Default = Pattern 3, (1Hz)



1	2	3	4	5	6	7	8	9	10	
							ISSUE	MOD No.	REASON - INITIAL - DATE	
							A		INTRODUCTION RSR - 05/03/2021	

OPTIONAL LINE MONITORING RESISTOR, CUSTOMER SUPPLIED,
RECOMMENDED MINIMUM VALUES:
14V MAX SYSTEM = 120Ω MIN, 2W MIN OR 1KΩ MIN, 0.5W MIN
28V MAX SYSTEM = 470Ω MIN, 2W MIN OR 2.4KΩ MIN, 0.5W MIN

LED Single Stage Configuration Xenon Strobe Single Stage	Config.: 1a	LED Two/Three Stage .Voltage Free 2nd & 3rd Stage Activation Configuration Xenon Strobe Single Stage	Config.: 1b
---	-------------	---	-------------

Line Monitoring

Apply Power to +ve & -ve to power each beacon

Stage 1: Apply Power to Stage 1 +ve & Stage 1 -ve/Common
 Stage 2: Apply Power to Stage 1 +ve & Stage 1 -ve/Common
 & connect Stage 2 to Stage 1 -ve/Common
 Stage 3: Apply Power to Stage 1 +ve & Stage 1 -ve/Common
 & connect Stage 3 to Stage 1 -ve/Common



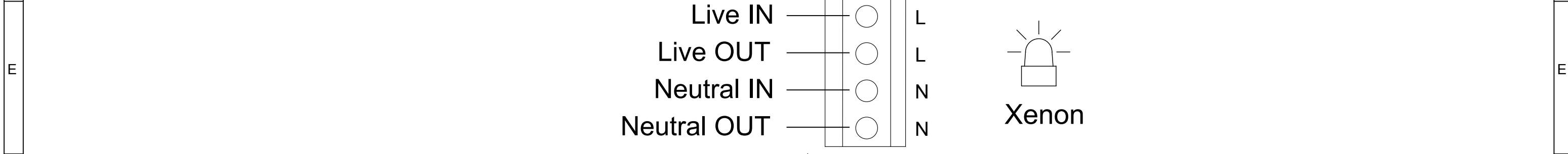
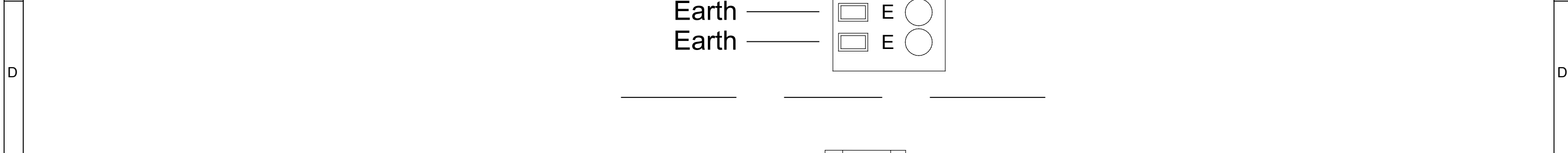
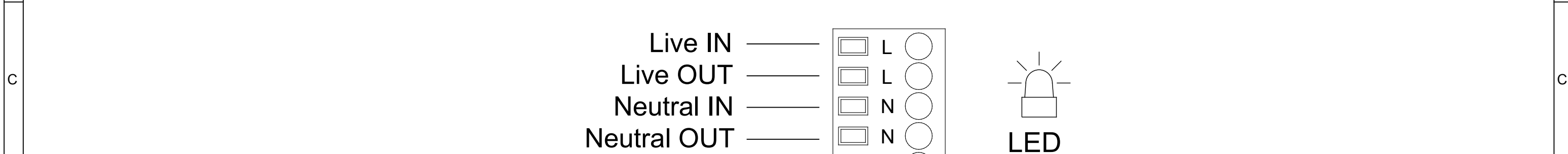
DRAWING TO BS8888:2000 GEOMETRIC TOLERANCES TO ISO1101:1983 LINEAR DIMENSIONAL TOLS ANGULAR DIMENSIONAL TOLS	DRAWN R.S.RAIT	DATE 05/03/2021	SURFACE FINISH	WEIGHT (Kg)	THIS DRAWING AND ANY INFORMATION OR DESCRIPTIVE MATTER THEREIN IS COMMUNICATED IN CONFIDENCE AND IS THE COPYRIGHT PROPERTY OF EUROPEAN SAFETY SYSTEMS LTD. NEITHER THE WHOLE OR ANY EXTRACT MAY BE DISCLOSED, LOANED, COPIED OR USED FOR MANUFACTURING OR TENDERING PURPOSES WITHOUT THEIR WRITTEN CONSENT.	 EUROPEAN SAFETY SYSTEMS LTD IMPRESS HOUSE MANSELL ROAD ACTON LONDON W3 7QH WWW.E2S.COM	ALL DIMENSIONS IN MM IF IN DOUBT, ASK - DO NOT SCALE		A3
	CHECKED B.ISARD	DATE 05/03/2021	MATERIAL	TITLE MCBLD2X05 DC LED/XENON DUAL BEACON WIRING DIAGRAMS					
	STANDARDS M RANGE	APPROVED R.N.POTTS	DATE 05/03/2021	ALTERNATIVE MATERIAL			SCALE NTS	SHEET 1 OF 1	DRAWING NUMBER D207-06-651

ISSUE	MOD No.	REASON - INITIAL - DATE
A		INTRODUCTION RSR - 05/03/2021

A

	Standard Configuration	Config.: 1
	Combined LED & Xenon Strobe Beacon	
	Power: Live & Neutral to Power each Beacon	

B



F

DRAWING TO BS8888:2000 GEOMETRIC TOLERANCES TO ISO1101:1983 LINEAR DIMENSIONAL TOLS ANGULAR DIMENSIONAL TOLS	DRAWN	DATE	SURFACE FINISH	WEIGHT (Kg)	THIS DRAWING AND ANY INFORMATION OR DESCRIPTIVE MATTER THEREIN IS COMMUNICATED IN CONFIDENCE AND IS THE COPYRIGHT PROPERTY OF EUROPEAN SAFETY SYSTEMS LTD. NEITHER THE WHOLE OR ANY EXTRACT MAY BE DISCLOSED, LOANED, COPIED OR USED FOR MANUFACTURING OR TENDERING PURPOSES WITHOUT THEIR WRITTEN CONSENT. © EUROPEAN SAFETY SYSTEMS LTD. AS PER LATEST DATE OF ISSUE SHOWN ABOVE	 warning signals EUROPEAN SAFETY SYSTEMS LTD IMPRESS HOUSE MANSELL ROAD ACTON LONDON W3 7QH WWW.E2S.COM	ALL DIMENSIONS IN MM	 	A3		
	R.S.RAIT	05/03/2021					IF IN DOUBT, ASK - DO NOT SCALE				
	CHECKED	DATE		MATERIAL			TITLE MCBLD2X05 AC LED/XENON DUAL BEACON WIRING DIAGRAM				
	B.ISARD	05/03/2021		ALTERNATIVE MATERIAL			SCALE	SHEET	DRAWING NUMBER		
STANDARDS	APPROVED	DATE			NTS	1 OF 1	D207-06-655				
M RANGE	R.N.POTTS	05/03/2021									

G