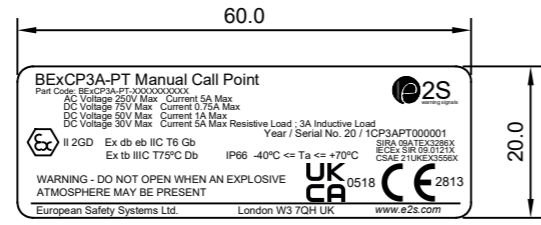


ISSUE	MOD No.	INITIAL/DATE
1		INTRODUCTION DH 13-04-22
2		UKEX ADDED DH 10-10-22

A
B
C
D
E
F
G

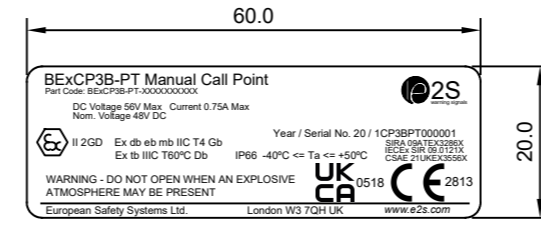
A
B
C
D
E
F
G

BExCP3A-PT



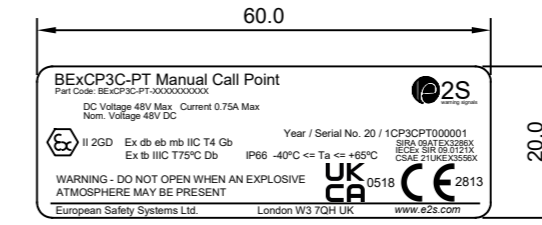
BExCP3A-PT

BExCP3B-PT

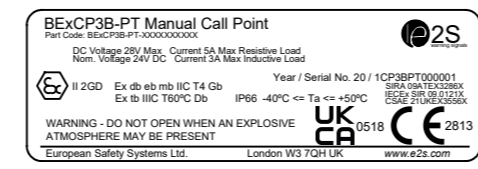


BExCP3B-PT - 48V DC Nominal

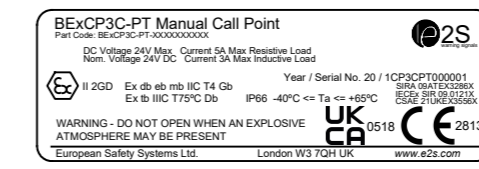
BExCP3C-PT



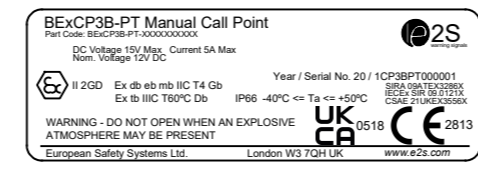
BExCP3C-PT - 48V DC Nominal



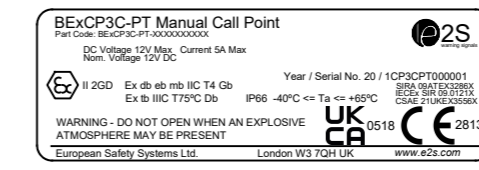
BExCP3B-PT - 24V DC Nominal



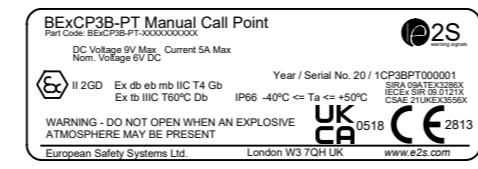
BExCP3C-PT - 24V DC Nominal



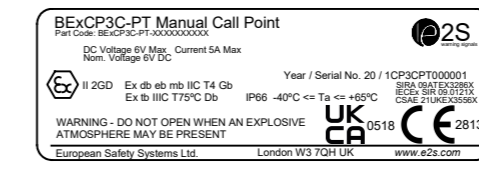
BExCP3B-PT - 12V DC Nominal



BExCP3C-PT - 12V DC Nominal



BExCP3B-PT - 6V DC Nominal



BExCP3C-PT - 6V DC Nominal

Note:
For BExCP3B/C, Max Current may vary from that shown on drawing dependant on the type of modules fitted in unit.
For specific figures contact E2S sales

DRAWING TO BS8888:2000 GEOMETRIC TOLERANCES TO ISO1101:1983 LINEAR DIMENSIONAL TOLS +/-0.35mm ANGULAR DIMENSIONAL TOLS +/-2 deg	DRAWN	DATE	13-04-22	SURFACE FINISH	WEIGHT (Kg)	THIS DRAWING AND ANY INFORMATION OR DESCRIPTIVE MATTER THEREIN IS COMMUNICATED IN CONFIDENCE AND IS THE COPYRIGHT PROPERTY OF EUROPEAN SAFETY SYSTEMS LTD. NEITHER THE WHOLE OR ANY EXTRACT MAY BE DISCLOSED, LOANED, COPIED OR USED FOR MANUFACTURING OR TENDERING PURPOSES WITHOUT THEIR WRITTEN CONSENT.	 EUROPEAN SAFETY SYSTEMS LTD IMPRESS HOUSE MANSELL ROAD ACTON LONDON W3 7QH WWW.E2S.COM	ALL DIMENSIONS IN MM			A3
	D.HOWGILL							MATERIAL	IF IN DOUBT, ASK - DO NOT SCALE		
	CHECKED	DATE	13-04-22	SEE NOTE				TITLE	BExCP3A/B/C-PT MANUAL CALL POINT PRODUCT LABELS		
STANDARDS BExCP3 Manual Call Point	APPROVED	DATE	13-04-22	ALTERNATIVE MATERIAL	EUROPEAN SAFETY SYSTEMS LTD. AS PER LATEST DATE OF ISSUE SHOWN ABOVE	SCALE	SHEET	DRAWING NUMBER			
	R.N.POTTS					1:1	1 of 1	D150-09-201			