

# SPECTRA B300RTH

Rotating Beacon  
 G6,35/GY6,35 Halogen Bulb  
 IP Rating: IP65  
 Temp: -25°C to +50°C  
 Unit weight: 370g DC : 370g AC  
 CE, UKCA



Dimensions : Ø100 x 150mm  
 1.5mm<sup>2</sup> terminals  
 Cable entry: 1 x 5-7mm push through  
 grommet  
 1 x M20 cable entry ( IP65)

x = Lens colour  
 R = Red                    A = Amber  
 B = Blue                 C = Clear  
 G = Green                Y = Yellow

Bulb Type G6,35 / GY6,35

Order code            Voltage  
 B300RTH012B/x 12V DC 1720mA  
 B300RTH024B/x 24V DC 910mA

B300RTH115B/x 115V AC 216mA  
 B300RTH230B/x 230V AC 117mA

Mountings  
 B300RAB001 Right angle bracket  
 B300TMA001 Tube mounting assembly


E2S Part No.	Version
BJC20W12VCL	12V 20W
BJC20W24VCL	24V 20W
BJCD25W120VCL	115V 25W
BJCD25W230VCL	230V 25W


D113-00-001-IS Issue 1


Sheet 1 of 2  
 19/01/2023


Tel : +44 (0)20 8743 8880  
 www.e2s.com



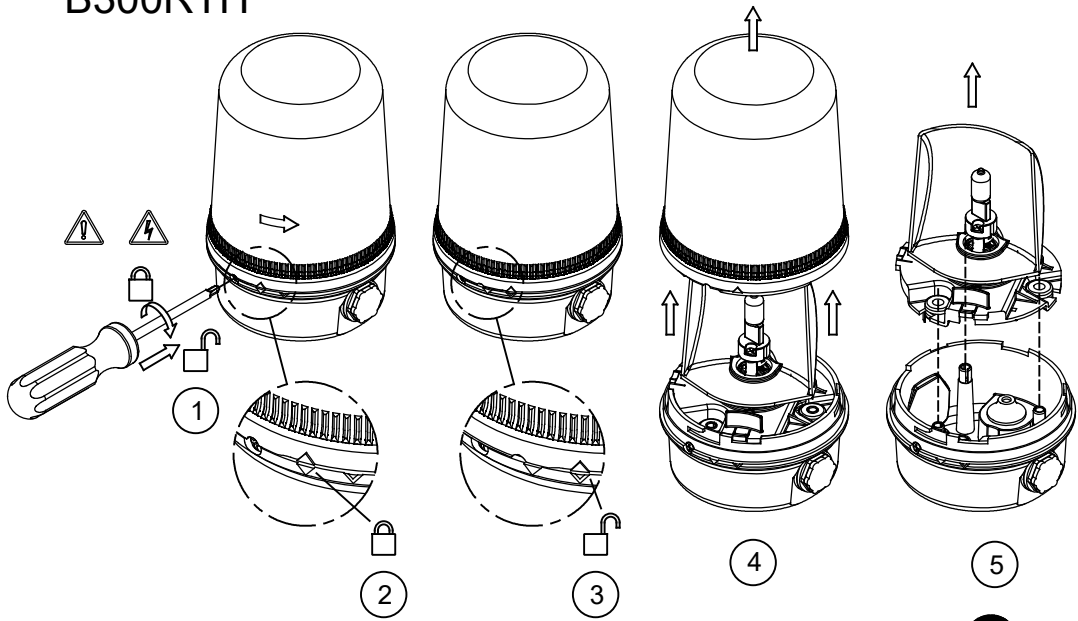
 **ATTENTION:** Installation must be carried out by an electrician in compliance with the latest codes and regulations.

 **ATTENTION:** Disconnect from power source before installation or service to prevent electric shock.

 **ATTENTION:** Lens on unit will be hot allow to cool prior to removal.

 **ATTENTION:** Do not touch the surface of halogen bulb when changing.

# 3 SPECTRA B300RTH



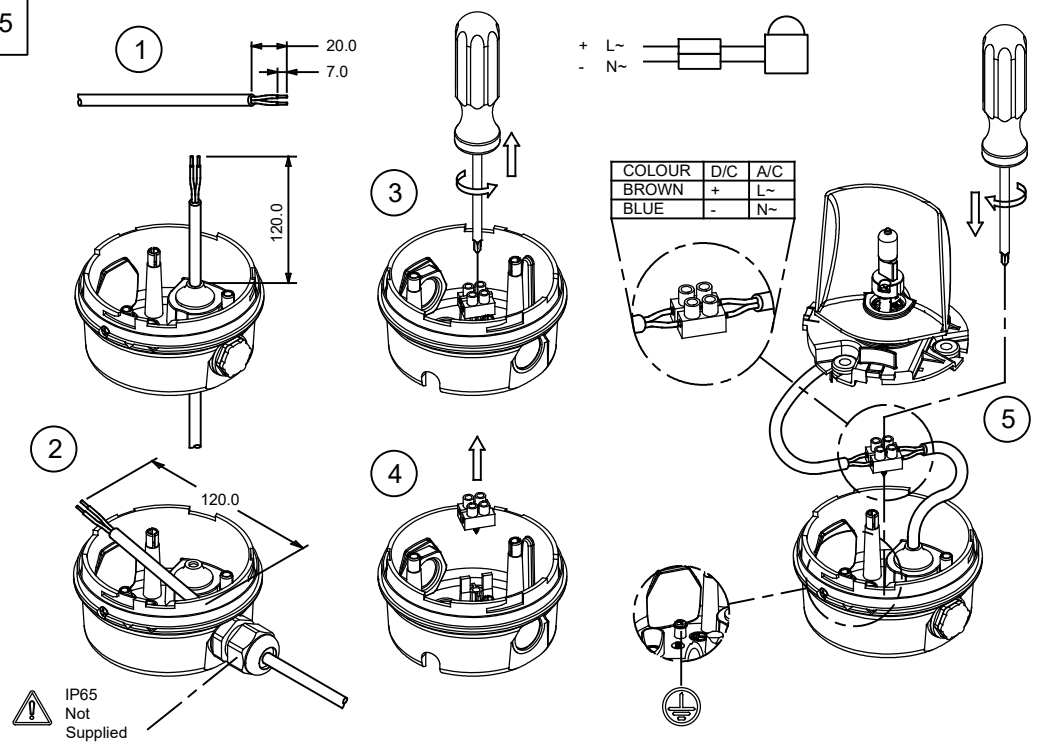
D113-00-001-IS Issue 1

Sheet 2 of 2  
19/01/2023

Tel: +44 (0)20 8743 8880  
www.e2s.com

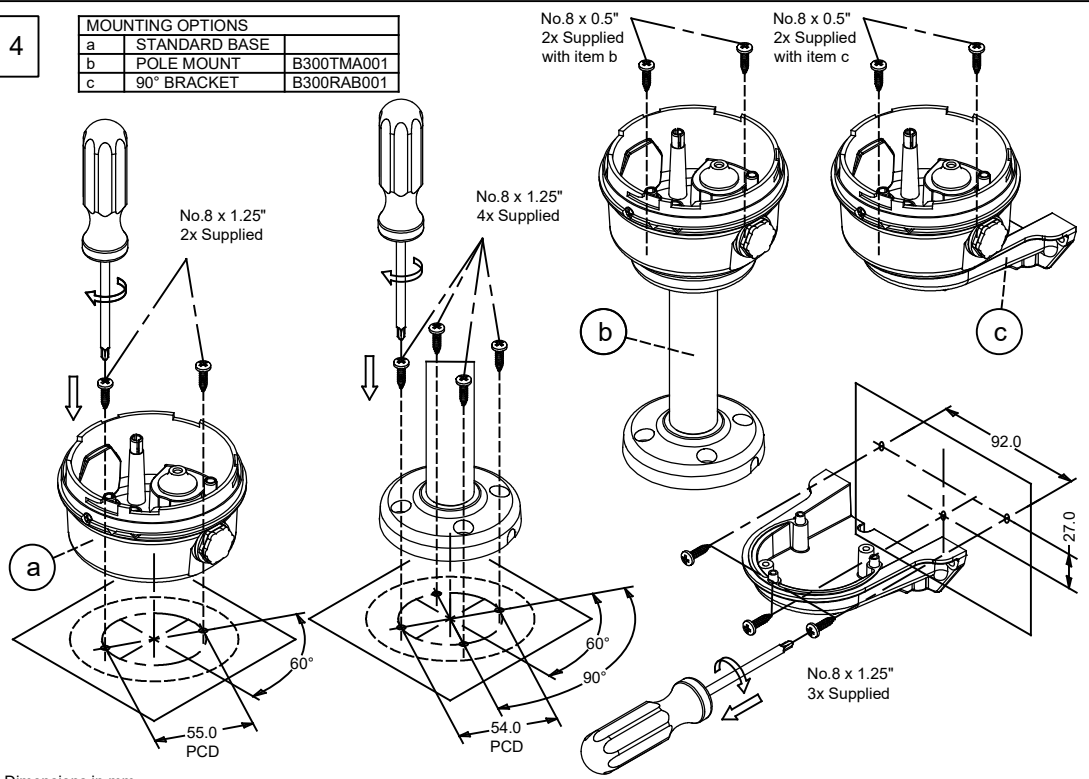


5

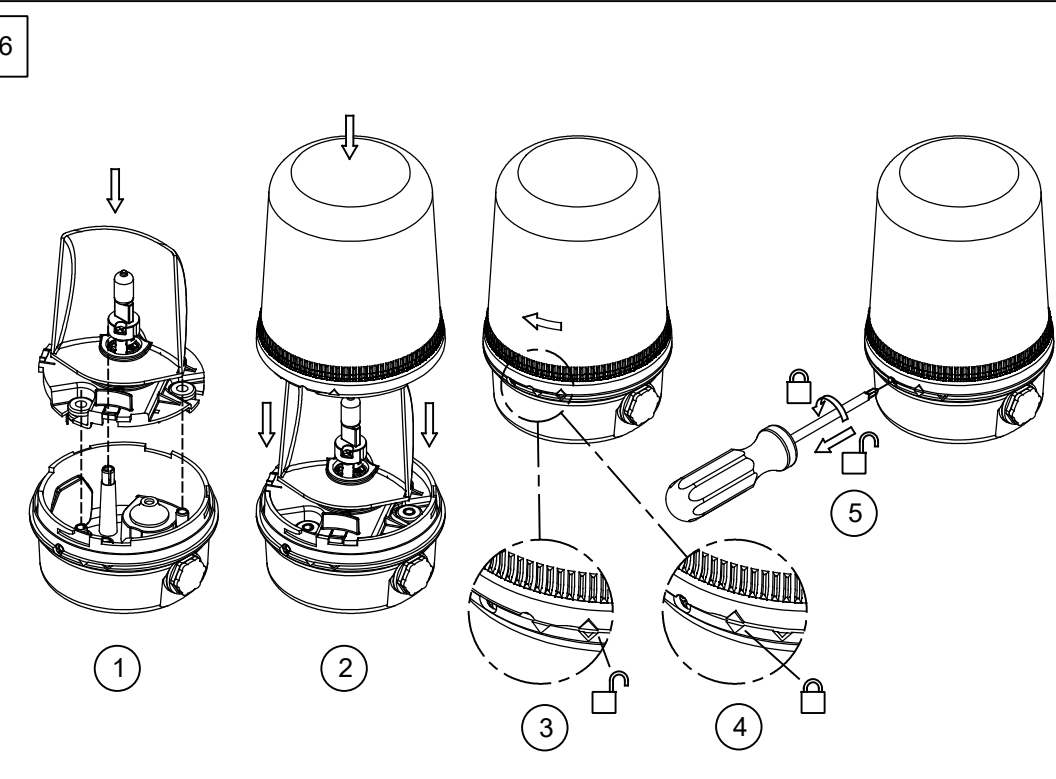


4

MOUNTING OPTIONS	
a	STANDARD BASE
b	POLE MOUNT
c	90° BRACKET



6



Dimensions in mm