

1

# SPECTRA B400STR

Xenon Strobe Flashing Beacon

15J Xenon FlashTube

Three selectable modes:

- Flashing 1 Hz
- Flashing 1.5 Hz
- Double Strike

IP Rating: IP65

Temp: -25°C to +50°C

Unit weight: 696g DC 632g AC

CE, UKCA



Dimensions : Ø140 x 225mm

1.5mm<sup>2</sup> terminals

Cable entry: 1 x 5-7mm push through grommet

2 x M20 cable entry ( IP65)

[x] = Lens colour

R = Red

B = Blue

G = Green

A = Amber

C = Clear

Y = Yellow

Mountings

B400RAB001 Right angle bracket

B400TMA001 Tube mounting assembly

Order code

B400STR024B/[x]

B400STR048B/[x]

Voltage

24V DC/AC 870mA

48V DC/AC 480mA

B400STR115B/[x]

115V AC 400mA

B400STR230B/[x]

230V AC 225mA

D122-00-001-IS Issue 1

Sheet 1 of 2  
19/01/2023

Tel : +44 (0)20 8743 8880  
www.e2s.com



2



**ATTENTION:** Installation must be carried out by an electrician in compliance with the latest codes and regulations.



**ATTENTION:** Disconnect from power source before installation or service to prevent electric shock.



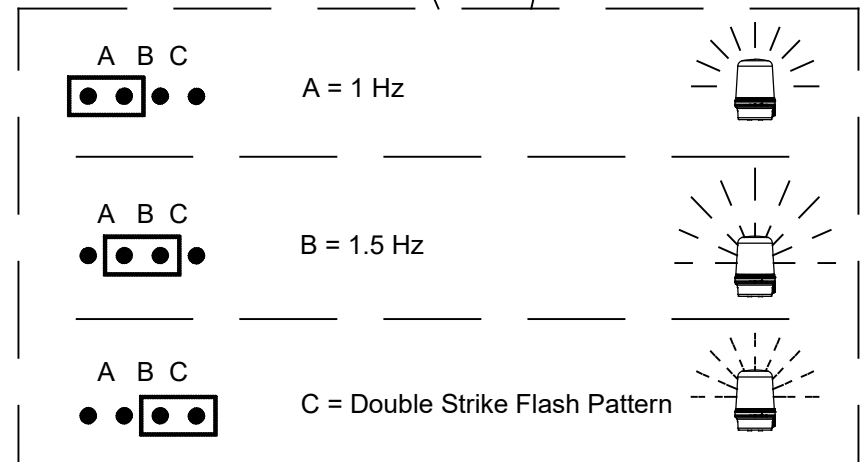
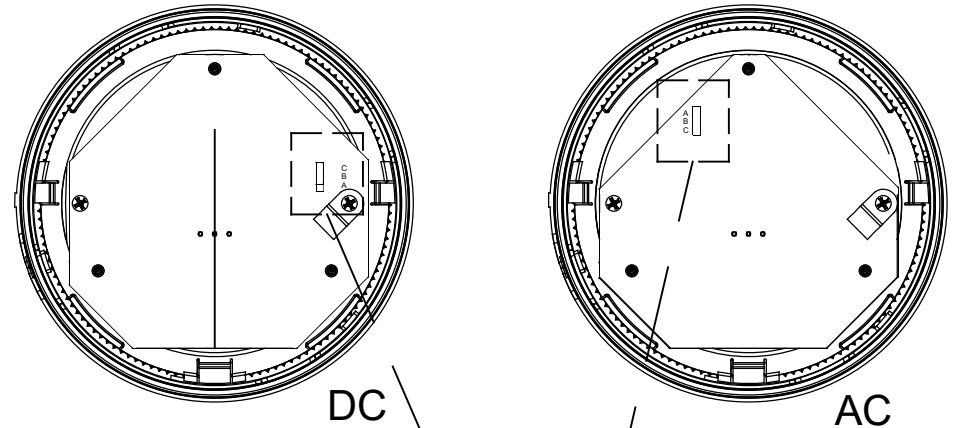
**ATTENTION:** On strobe beacons allow a minimum of 2 minutes for hazardous high voltage to discharge from unit.



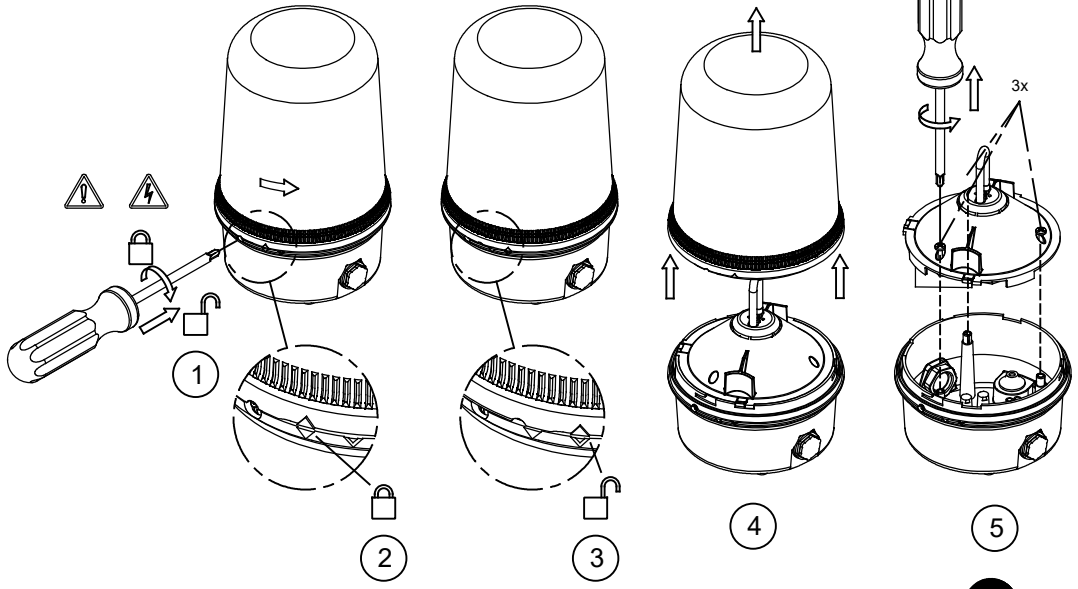
**ATTENTION:** Lens on unit will be hot allow to cool prior to removal.

3

## B400STR



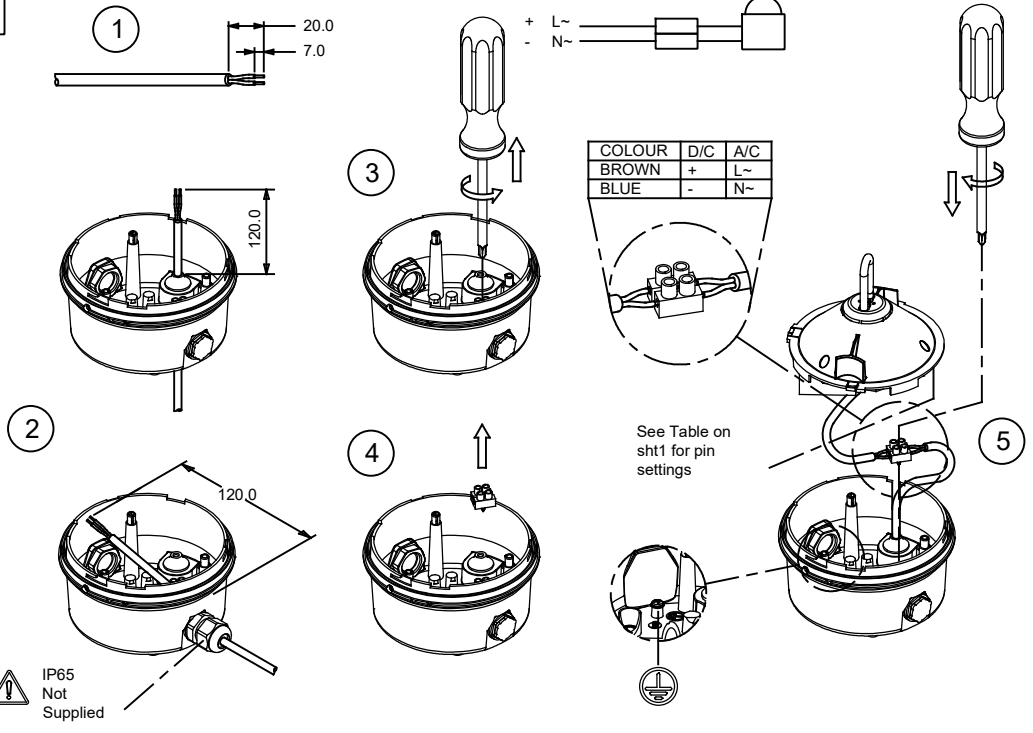
# SPECTRA B400STR



D122-00-001-IS Issue 1

Sheet 2 of 2  
19/01/2023

Tel : +44 (0)20 8743 8880  
www.e2s.com



| MOUNTING OPTIONS |               |            |
|------------------|---------------|------------|
| a                | STANDARD BASE |            |
| b                | POLE MOUNT    | B400TMA001 |
| c                | 90° BRACKET   | B400RAB001 |

