

A	60.0		30.0		A
	GNExCP7-PT-S Maximum Power: 3.122W Input Voltage / Current: 48Vdc max 1A max / 24Vdc 3A max Input Voltage / Current: 250Vac 50/60Hz max 3.33A max Year / Serial No.: 001CP7PT3000001		CALL POINT TYPE 4, 4X, 13 IP68		
	INDUSTRIAL CONTROL EQUIPMENT FOR USE IN HAZARDOUS LOCATIONS ALL ENTRIES MUST BE AT TEMPERATURE EXCEEDS 80°C AT ENTRY OR 80°C AT BRANCHING POINT - USE SUITABLE MATED CABLE AND CABLE GLANDS - SEE INSTRUCTIONS WARNING: USE COVER BOLTS CLASS A4-70. DO NOT OPEN WHEN AN EXPLOSIVE ATMOSPHERE IS PRESENT. POTENTIAL ELECTROSTATIC CHARGING HAZARD - SEE INSTRUCTIONS. FOR INDOOR OR OUTDOOR USE, TO REDUCE THE RISK OF IGNITION OF HAZARDOUS ATMOSPHERES, CONDUIT RUNS MUST HAVE A SEALING FITTING CONNECTED WITHIN 18 INCHES OF CONDUIT. CAUTION - RISK OF ELECTRIC SHOCK - MORE THAN ONE DISCONNECT MAY BE REQUIRED TO DE-ENERGIZE THE EQUIPMENT BEFORE SERVICING. AVERTISSEMENT: UTILISER COUVRIS BOULONS CLASSE A4-70. NE PAS OUVRIER UN PRESENCE D'ATMOSPHERE EXPLOSIVE. DANGER POTENTIEL CHARGE ELECTROSTATIQUE - VOIR LES INSTRUCTIONS. POUR USAGE INTERIEUR OU EXTERIEUR, POUR REDUIRE LE RISQUE D'INFLAMMATION DES ATMOSPHERES DANGEREUSES, LES CONDUITS DE CONDUIT DOIVENT AVOIR UN RACCORDEMENT ETANCHEE. ATTENTION: RISQUE DE CHOC ELECTRIQUE - PLUSIEURS SECTIONNES PEUVENT ETRE NECESSAIRES POUR COUPER L'ALIMENTATION DE L'APPAREILLAGE AVANT D'ENTREPRENDRE L'ENTRETIEN. ATENÇÃO: CLASSE DOS PARAFUSOS DA TAPPA A4-70. NÃO ABRA QUANDO UMA ATMOSFERA EXPLOSIVA ESTIVER PRESENTE. RISCO POTENCIAL DE DESCARGA ELETRÓSTATICA. LER O MANUAL PARA SE A TEMPERATURA EXCEBER 70 °C NA ENTRADA OU 80 °C NO PONTO DE RAMIFICAÇÃO. UTILIZE CABOS E PRENSAS-CABOS ADEQUADOS. CONECTE SE UTILIZADOR, DEVEM TER UMA SELAGEM PROXIMA AO INJULCRO, NO MÁXIMO 18 POLEGADAS DE DISTÂNCIA.				


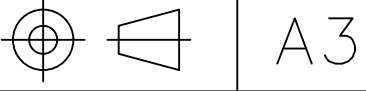
B	60.0		30.0		B
	GNExCP7-PT-S-L Maximum Power: 3.122W Input Voltage / Current: 48Vdc max 1A max / 24Vdc 3A max Year / Serial No.: 001CP7PT3000009		CALL POINT TYPE 4, 4X, 13 IP68		
	INDUSTRIAL CONTROL EQUIPMENT FOR USE IN HAZARDOUS LOCATIONS ALL ENTRIES MUST BE AT TEMPERATURE EXCEEDS 80°C AT ENTRY OR 80°C AT BRANCHING POINT - USE SUITABLE MATED CABLE AND CABLE GLANDS - SEE INSTRUCTIONS WARNING: USE COVER BOLTS CLASS A4-70. DO NOT OPEN WHEN AN EXPLOSIVE ATMOSPHERE IS PRESENT. POTENTIAL ELECTROSTATIC CHARGING HAZARD - SEE INSTRUCTIONS. FOR INDOOR OR OUTDOOR USE, TO REDUCE THE RISK OF IGNITION OF HAZARDOUS ATMOSPHERES, CONDUIT RUNS MUST HAVE A SEALING FITTING CONNECTED WITHIN 18 INCHES OF CONDUIT. CAUTION - RISK OF ELECTRIC SHOCK - MORE THAN ONE DISCONNECT MAY BE REQUIRED TO DE-ENERGIZE THE EQUIPMENT BEFORE SERVICING. AVERTISSEMENT: UTILISER COUVRIS BOULONS CLASSE A4-70. NE PAS OUVRIER UN PRESENCE D'ATMOSPHERE EXPLOSIVE. DANGER POTENTIEL CHARGE ELECTROSTATIQUE - VOIR LES INSTRUCTIONS. POUR USAGE INTERIEUR OU EXTERIEUR, POUR REDUIRE LE RISQUE D'INFLAMMATION DES ATMOSPHERES DANGEREUSES, LES CONDUITS DE CONDUIT DOIVENT AVOIR UN RACCORDEMENT ETANCHEE. ATTENTION: RISQUE DE CHOC ELECTRIQUE - PLUSIEURS SECTIONNES PEUVENT ETRE NECESSAIRES POUR COUPER L'ALIMENTATION DE L'APPAREILLAGE AVANT D'ENTREPRENDRE L'ENTRETIEN. ATENÇÃO: CLASSE DOS PARAFUSOS DA TAPPA A4-70. NÃO ABRA QUANDO UMA ATMOSFERA EXPLOSIVA ESTIVER PRESENTE. RISCO POTENCIAL DE DESCARGA ELETRÓSTATICA. LER O MANUAL PARA SE A TEMPERATURA EXCEBER 70 °C NA ENTRADA OU 80 °C NO PONTO DE RAMIFICAÇÃO. UTILIZE CABOS E PRENSAS-CABOS ADEQUADOS. CONECTE SE UTILIZADOR, DEVEM TER UMA SELAGEM PROXIMA AO INJULCRO, NO MÁXIMO 18 POLEGADAS DE DISTÂNCIA.				

C	GNExCP7-PT-S PRODUCT LABEL 1		GNExCP7-PT-S-L PRODUCT LABEL 1		C
	DEMKO 19 ATEX 2101X IECEx ULD 19 0007X UL21UKEX2134X IEx 23.0091X ATEX/IECEx/UKEx Ex db IIC T5 Gb (Ta -55°C to +70°C) Ex db IIC T6 Gb (Ta -55°C to +85°C) Ex db IIC T85°C Db (Ta -55°C to +70°C)		DEMKO 19 ATEX 2101X IECEx ULD 19 0007X UL21UKEX2134X IEx 23.0091X ATEX/IECEx/UKEx Ex db IIC T5 Gb (Ta -55°C to +70°C) Ex db IIC T6 Gb (Ta -55°C to +85°C) Ex db IIC T85°C Db (Ta -55°C to +70°C)		
	NEC/IEC CLASS / DIV: Class I Div 2 Group ABCD T6 Ta -55°C to +60°C Class I Div 2 Group F3 T5 Ta -55°C to +60°C Class II Div 2 Ta -55°C to +60°C NEC CLASS ZONE: Class I Zone 1 AEx db IIC T6 Gb (Ta -55°C to +60°C) Zone 21 AEx db IIC T75°C Db (Ta -55°C to +60°C) CEC CLASS ZONE: Ex db IIC T6 Gb (Ta -55°C to +60°C) Ex db IIC T75°C Db (Ta -55°C to +60°C)				

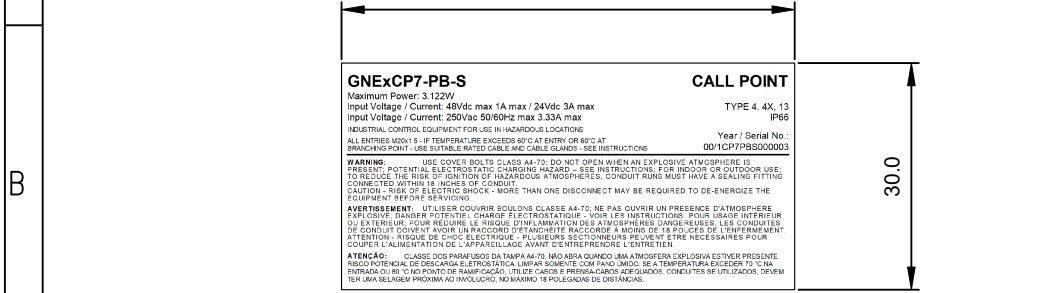
D	GNExCP7-PT-S PRODUCT LABEL 2		GNExCP7-PT-S-L PRODUCT LABEL 2		D
	DEMKO 19 ATEX 2101X IECEx ULD 19 0007X UL21UKEX2134X IEx 23.0091X ATEX/IECEx/UKEx Ex db IIC T5 Gb (Ta -55°C to +70°C) Ex db IIC T6 Gb (Ta -55°C to +85°C) Ex db IIC T85°C Db (Ta -55°C to +70°C)		DEMKO 19 ATEX 2101X IECEx ULD 19 0007X UL21UKEX2134X IEx 23.0091X ATEX/IECEx/UKEx Ex db IIC T5 Gb (Ta -55°C to +70°C) Ex db IIC T6 Gb (Ta -55°C to +85°C) Ex db IIC T85°C Db (Ta -55°C to +70°C)		
	NEC/IEC CLASS / DIV: Class I Div 2 Group ABCD T6 Ta -55°C to +60°C Class I Div 2 Group F3 T5 Ta -55°C to +60°C Class II Div 2 Ta -55°C to +60°C NEC CLASS ZONE: Class I Zone 1 AEx db IIC T6 Gb (Ta -55°C to +60°C) Zone 21 AEx db IIC T75°C Db (Ta -55°C to +60°C) CEC CLASS ZONE: Ex db IIC T6 Gb (Ta -55°C to +60°C) Ex db IIC T75°C Db (Ta -55°C to +60°C)				

E	GNExCP7-PT-D Maximum Power: 6.244W Input Voltage / Current: 48Vdc max 1A max / 24Vdc 3A max Input Voltage / Current: 250Vac 50/60Hz max 3.33A max Year / Serial No.: 001CP7PTD00001		CALL POINT TYPE 4, 4X, 13 IP68		E
	INDUSTRIAL CONTROL EQUIPMENT FOR USE IN HAZARDOUS LOCATIONS ALL ENTRIES MUST BE AT TEMPERATURE EXCEEDS 80°C AT ENTRY OR 80°C AT BRANCHING POINT - USE SUITABLE MATED CABLE AND CABLE GLANDS - SEE INSTRUCTIONS WARNING: USE COVER BOLTS CLASS A4-70. DO NOT OPEN WHEN AN EXPLOSIVE ATMOSPHERE IS PRESENT. POTENTIAL ELECTROSTATIC CHARGING HAZARD - SEE INSTRUCTIONS. FOR INDOOR OR OUTDOOR USE, TO REDUCE THE RISK OF IGNITION OF HAZARDOUS ATMOSPHERES, CONDUIT RUNS MUST HAVE A SEALING FITTING CONNECTED WITHIN 18 INCHES OF CONDUIT. CAUTION - RISK OF ELECTRIC SHOCK - MORE THAN ONE DISCONNECT MAY BE REQUIRED TO DE-ENERGIZE THE EQUIPMENT BEFORE SERVICING. AVERTISSEMENT: UTILISER COUVRIS BOULONS CLASSE A4-70. NE PAS OUVRIER UN PRESENCE D'ATMOSPHERE EXPLOSIVE. DANGER POTENTIEL CHARGE ELECTROSTATIQUE - VOIR LES INSTRUCTIONS. POUR USAGE INTERIEUR OU EXTERIEUR, POUR REDUIRE LE RISQUE D'INFLAMMATION DES ATMOSPHERES DANGEREUSES, LES CONDUITS DE CONDUIT DOIVENT AVOIR UN RACCORDEMENT ETANCHEE. ATTENTION: RISQUE DE CHOC ELECTRIQUE - PLUSIEURS SECTIONNES PEUVENT ETRE NECESSAIRES POUR COUPER L'ALIMENTATION DE L'APPAREILLAGE AVANT D'ENTREPRENDRE L'ENTRETIEN. ATENÇÃO: CLASSE DOS PARAFUSOS DA TAPPA A4-70. NÃO ABRA QUANDO UMA ATMOSFERA EXPLOSIVA ESTIVER PRESENTE. RISCO POTENCIAL DE DESCARGA ELETRÓSTATICA. LER O MANUAL PARA SE A TEMPERATURA EXCEBER 70 °C NA ENTRADA OU 80 °C NO PONTO DE RAMIFICAÇÃO. UTILIZE CABOS E PRENSAS-CABOS ADEQUADOS. CONECTE SE UTILIZADOR, DEVEM TER UMA SELAGEM PROXIMA AO INJULCRO, NO MÁXIMO 18 POLEGADAS DE DISTÂNCIA.		INDUSTRIAL CONTROL EQUIPMENT FOR USE IN HAZARDOUS LOCATIONS ALL ENTRIES MUST BE AT TEMPERATURE EXCEEDS 80°C AT ENTRY OR 80°C AT BRANCHING POINT - USE SUITABLE MATED CABLE AND CABLE GLANDS - SEE INSTRUCTIONS WARNING: USE COVER BOLTS CLASS A4-70. DO NOT OPEN WHEN AN EXPLOSIVE ATMOSPHERE IS PRESENT. POTENTIAL ELECTROSTATIC CHARGING HAZARD - SEE INSTRUCTIONS. FOR INDOOR OR OUTDOOR USE, TO REDUCE THE RISK OF IGNITION OF HAZARDOUS ATMOSPHERES, CONDUIT RUNS MUST HAVE A SEALING FITTING CONNECTED WITHIN 18 INCHES OF CONDUIT. CAUTION - RISK OF ELECTRIC SHOCK - MORE THAN ONE DISCONNECT MAY BE REQUIRED TO DE-ENERGIZE THE EQUIPMENT BEFORE SERVICING. AVERTISSEMENT: UTILISER COUVRIS BOULONS CLASSE A4-70. NE PAS OUVRIER UN PRESENCE D'ATMOSPHERE EXPLOSIVE. DANGER POTENTIEL CHARGE ELECTROSTATIQUE - VOIR LES INSTRUCTIONS. POUR USAGE INTERIEUR OU EXTERIEUR, POUR REDUIRE LE RISQUE D'INFLAMMATION DES ATMOSPHERES DANGEREUSES, LES CONDUITS DE CONDUIT DOIVENT AVOIR UN RACCORDEMENT ETANCHEE. ATTENTION: RISQUE DE CHOC ELECTRIQUE - PLUSIEURS SECTIONNES PEUVENT ETRE NECESSAIRES POUR COUPER L'ALIMENTATION DE L'APPAREILLAGE AVANT D'ENTREPRENDRE L'ENTRETIEN. ATENÇÃO: CLASSE DOS PARAFUSOS DA TAPPA A4-70. NÃO ABRA QUANDO UMA ATMOSFERA EXPLOSIVA ESTIVER PRESENTE. RISCO POTENCIAL DE DESCARGA ELETRÓSTATICA. LER O MANUAL PARA SE A TEMPERATURA EXCEBER 70 °C NA ENTRADA OU 80 °C NO PONTO DE RAMIFICAÇÃO. UTILIZE CABOS E PRENSAS-CABOS ADEQUADOS. CONECTE SE UTILIZADOR, DEVEM TER UMA SELAGEM PROXIMA AO INJULCRO, NO MÁXIMO 18 POLEGADAS DE DISTÂNCIA.		
	NEC/IEC CLASS / DIV: Class I Div 2 Group ABCD T6 Ta -55°C to +60°C Class I Div 2 Group F3 T5 Ta -55°C to +60°C Class II Div 2 Ta -55°C to +60°C NEC CLASS ZONE: Class I Zone 1 AEx db IIC T6 Gb (Ta -55°C to +60°C) Zone 21 AEx db IIC T75°C Db (Ta -55°C to +60°C) CEC CLASS ZONE: Ex db IIC T6 Gb (Ta -55°C to +60°C) Ex db IIC T75°C Db (Ta -55°C to +60°C)				

F	GNExCP7-PT-D PRODUCT LABEL 1		GNExCP7-PT-D-L PRODUCT LABEL 1		F
	DEMKO 19 ATEX 2101X IECEx ULD 19 0007X UL21UKEX2134X IEx 23.0091X ATEX/IECEx/UKEx Ex db IIC T5 Gb (Ta -55°C to +70°C) Ex db IIC T6 Gb (Ta -55°C to +85°C) Ex db IIC T85°C Db (Ta -55°C to +70°C)		DEMKO 19 ATEX 2101X IECEx ULD 19 0007X UL21UKEX2134X IEx 23.0091X ATEX/IECEx/UKEx Ex db IIC T5 Gb (Ta -55°C to +70°C) Ex db IIC T6 Gb (Ta -55°C to +85°C) Ex db IIC T85°C Db (Ta -55°C to +70°C)		
	NEC/IEC CLASS / DIV: Class I Div 2 Group ABCD T6 Ta -55°C to +60°C Class I Div 2 Group F3 T5 Ta -55°C to +60°C Class II Div 2 Ta -55°C to +60°C NEC CLASS ZONE: Class I Zone 1 AEx db IIC T6 Gb (Ta -55°C to +60°C) Zone 21 AEx db IIC T75°C Db (Ta -55°C to +60°C) CEC CLASS ZONE: Ex db IIC T6 Gb (Ta -55°C to +60°C) Ex db IIC T75°C Db (Ta -55°C to +60°C)				

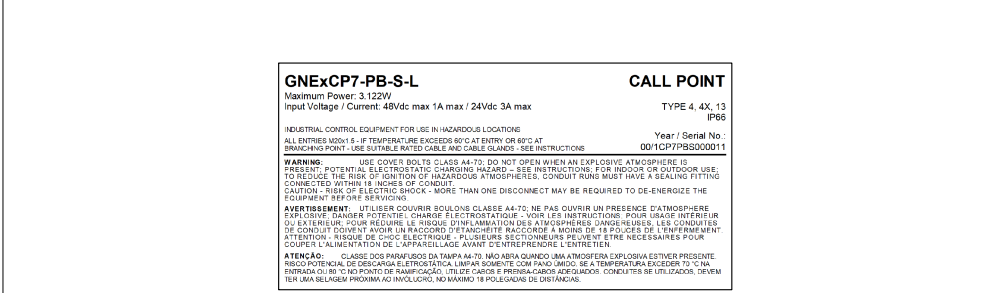
G	DRAWING TO BS8888:2000 GEOMETRIC TOLERANCES TO ISO1101:1983 LINEAR DIMENSIONAL TOLS +/-0.35mm ANGULAR DIMENSIONAL TOLS +/-2 deg		DRAWN DATE 19-06-20 D.HOWGILL	SURFACE FINISH WEIGHT (Kg)	THIS DRAWING AND ANY INFORMATION OR DESCRIPTIVE MATTER THEREIN IS COMMUNICATED IN CONFIDENCE AND IS THE COPYRIGHT PROPERTY OF EUROPEAN SAFETY SYSTEMS LTD. NEITHER THE WHOLE OR ANY EXTRACT MAY BE DISCLOSED, LOANED, COPIED OR USED FOR MANUFACTURING OR TENDERING PURPOSES WITHOUT THEIR WRITTEN CONSENT.	 EUROPEAN SAFETY SYSTEMS LTD IMPRESS HOUSE MANSELL ROAD ACTON LONDON W3 7QH WWW.E2S.COM	ALL DIMENSIONS IN MM IF IN DOUBT, ASK - DO NOT SCALE		TITLE GNEx CP7 PT / PB / PM PUSH BUTTON OPTION A1 CALL POINT PRODUCT LABEL
	STANDARDS GNEx CP7 CALL POINTS	CHECKED DATE 19-06-20 R.N.POTTS	MATERIAL ALTERNATIVE MATERIAL	SCALE 1:1 SHEET 1 of 3			DRAWING NUMBER D202-09-211		
	APPROVED DATE 19-06-20 R.N.POTTS	EUROPEAN SAFETY SYSTEMS LTD. AS PER LATEST DATE OF ISSUE SHOWN ABOVE	C	SHEET 1 of 3			DRAWING NUMBER D202-09-211		

	1	2	3	4	5	6	7	8	9	10
A								ISSUE	MOD No.	INITIAL/DATE
								1		INTRODUCTION DH 19-06-2020
								2		UKCA Mark added RNP 25-04-2022
							3		Added LED -L & -C units. Updated temperature ratings. Added Sheets 2-3. MA 29-08-2023	



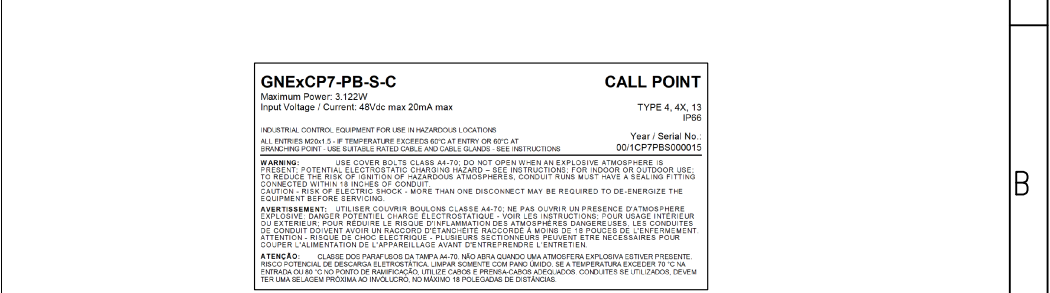
GNExCP7-PB-S
 Maximum Power: 3.122W
 Input Voltage / Current: 48Vdc max 1A max / 24Vdc 3A max
 TYPE 4, 4X, 13 IP68
 Year / Serial No.: 001CP7PB000011

GNExCP7-PB-S
PRODUCT LABEL 1



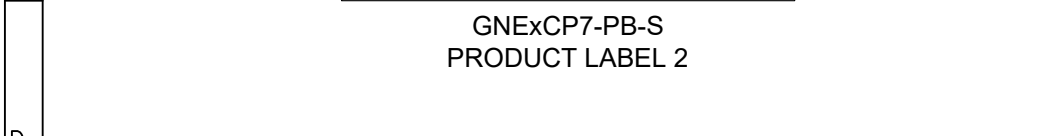
GNExCP7-PB-S-L
 Maximum Power: 3.122W
 Input Voltage / Current: 48Vdc max 1A max / 24Vdc 3A max
 TYPE 4, 4X, 13 IP68
 Year / Serial No.: 001CP7PB000011

GNExCP7-PB-S-L
PRODUCT LABEL 1



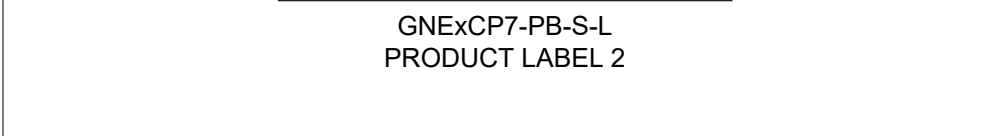
GNExCP7-PB-S-C
 Maximum Power: 3.122W
 Input Voltage / Current: 48Vdc max 20mA max
 TYPE 4, 4X, 13 IP68
 Year / Serial No.: 001CP7PB000011

GNExCP7-PB-S-C
PRODUCT LABEL 1



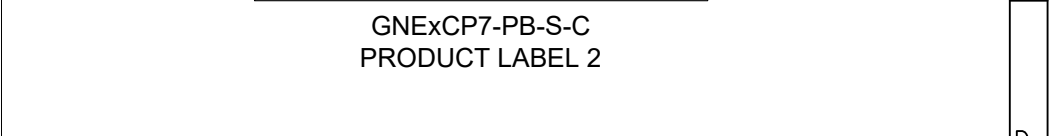
GNExCP7-PB-S
 Maximum Power: 6.244W
 Input Voltage / Current: 48Vdc max 1A max / 24Vdc 3A max
 TYPE 4, 4X, 13 IP68
 Year / Serial No.: 001CP7PB000011

GNExCP7-PB-S
PRODUCT LABEL 2



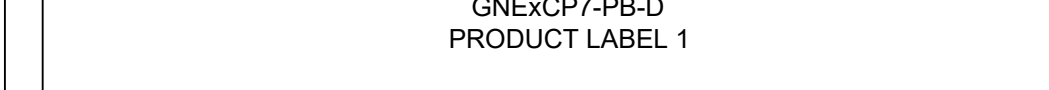
GNExCP7-PB-S-L
 Maximum Power: 6.244W
 Input Voltage / Current: 48Vdc max 1A max / 24Vdc 3A max
 TYPE 4, 4X, 13 IP68
 Year / Serial No.: 001CP7PB000011

GNExCP7-PB-S-L
PRODUCT LABEL 2



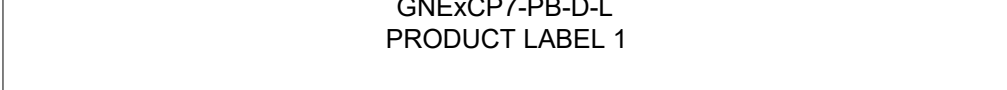
GNExCP7-PB-S-C
 Maximum Power: 6.244W
 Input Voltage / Current: 48Vdc max 20mA max
 TYPE 4, 4X, 13 IP68
 Year / Serial No.: 001CP7PB000011

GNExCP7-PB-S-C
PRODUCT LABEL 2



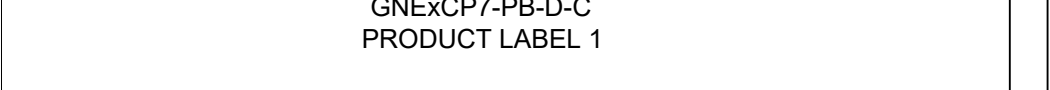
GNExCP7-PB-D
 Maximum Power: 6.244W
 Input Voltage / Current: 48Vdc max 1A max / 24Vdc 3A max
 TYPE 4, 4X, 13 IP68
 Year / Serial No.: 001CP7PB000011

GNExCP7-PB-D
PRODUCT LABEL 1



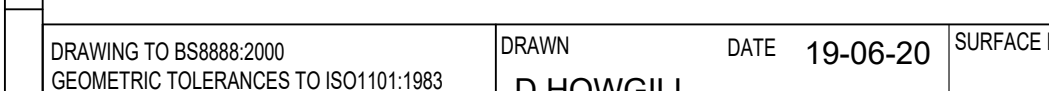
GNExCP7-PB-D-L
 Maximum Power: 6.244W
 Input Voltage / Current: 48Vdc max 1A max / 24Vdc 3A max
 TYPE 4, 4X, 13 IP68
 Year / Serial No.: 001CP7PB000011

GNExCP7-PB-D-L
PRODUCT LABEL 1



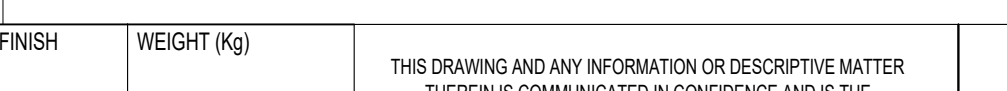
GNExCP7-PB-D-C
 Maximum Power: 6.244W
 Input Voltage / Current: 48Vdc max 20mA max
 TYPE 4, 4X, 13 IP68
 Year / Serial No.: 001CP7PB000011

GNExCP7-PB-D-C
PRODUCT LABEL 1



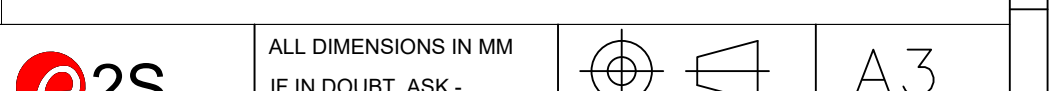
GNExCP7-PB-D
 Maximum Power: 6.244W
 Input Voltage / Current: 48Vdc max 1A max / 24Vdc 3A max
 TYPE 4, 4X, 13 IP68
 Year / Serial No.: 001CP7PB000011

GNExCP7-PB-D
PRODUCT LABEL 2



GNExCP7-PB-D-L
 Maximum Power: 6.244W
 Input Voltage / Current: 48Vdc max 1A max / 24Vdc 3A max
 TYPE 4, 4X, 13 IP68
 Year / Serial No.: 001CP7PB000011

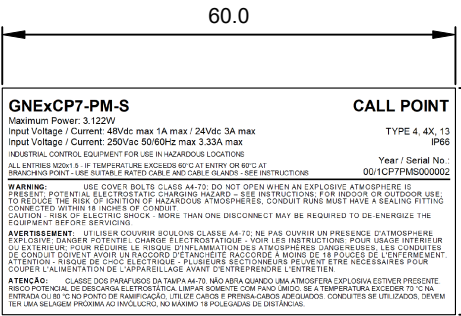
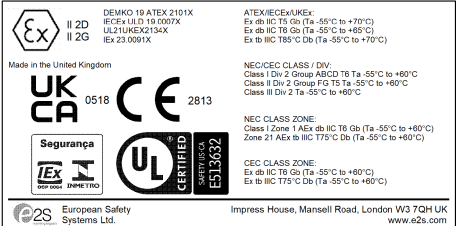
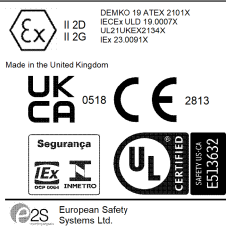
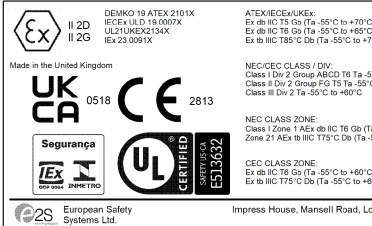
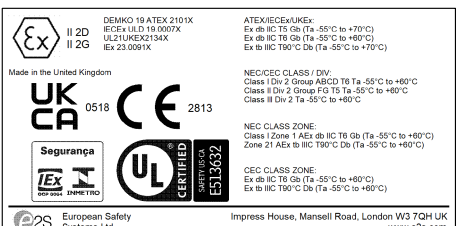
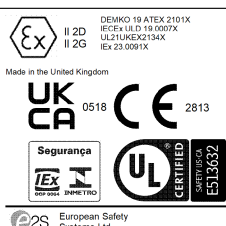
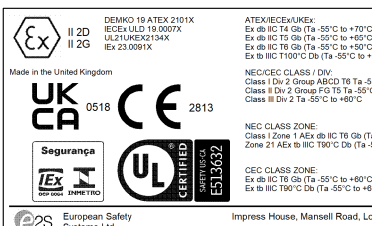

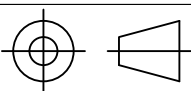
GNExCP7-PB-D-L
PRODUCT LABEL 2



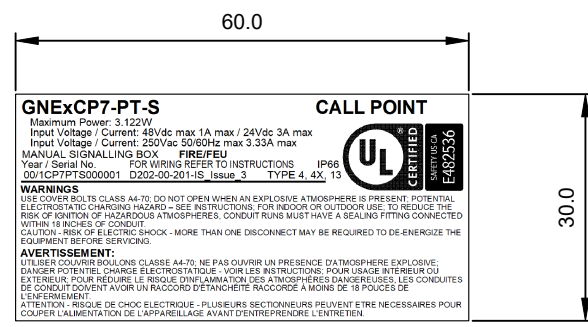
GNExCP7-PB-D-C
 Maximum Power: 6.244W
 Input Voltage / Current: 48Vdc max 20mA max
 TYPE 4, 4X, 13 IP68
 Year / Serial No.: 001CP7PB000011

GNExCP7-PB-D-C
PRODUCT LABEL 2

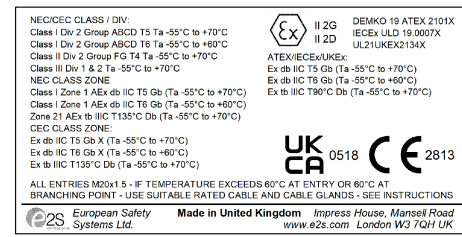
G	DRAWING TO BS8888:2000 GEOMETRIC TOLERANCES TO ISO1101:1983 LINEAR DIMENSIONAL TOLS +/-0.35mm ANGULAR DIMENSIONAL TOLS +/-2 deg	DRAWN	DATE	19-06-20	SURFACE FINISH	WEIGHT (Kg)	THIS DRAWING AND ANY INFORMATION OR DESCRIPTIVE MATTER THEREIN IS COMMUNICATED IN CONFIDENCE AND IS THE COPYRIGHT PROPERTY OF EUROPEAN SAFETY SYSTEMS LTD. NEITHER THE WHOLE OR ANY EXTRACT MAY BE DISCLOSED, LOANED, COPIED OR USED FOR MANUFACTURING OR TENDERING PURPOSES WITHOUT THEIR WRITTEN CONSENT.	 EUROPEAN SAFETY SYSTEMS LTD IMPRESS HOUSE MANSELL ROAD ACTON LONDON W3 7QH WWW.E2S.COM	ALL DIMENSIONS IN MM	 A3	
	STANDARDS	CHECKED	DATE	19-06-20	MATERIAL	TITLE			SCALE		SHEET
	GNEx CP7 CALL POINTS	APPROVED	DATE	19-06-20	ALTERNATIVE MATERIAL	GNEx CP7 PT / PB / PM PUSH BUTTON OPTION A1 CALL POINT PRODUCT LABEL			1:1		2 of 3

1	2	3	4	5	6	7	8	9	10												
A	 <p>GNExCP7-PM-S CALL POINT Maximum Power: 3.122W Input Voltage / Current: 48Vdc max 1A max / 24Vdc 3A max Input Voltage / Current: 250Vac 50/60Hz max 3.33A max TYPE 4, 4X, 13 IP68 Year / Serial No.: 001CP7PM500002</p> <p>GNExCP7-PM-S PRODUCT LABEL 1</p>  <p>GNExCP7-PM-S PRODUCT LABEL 2</p>			<p>GNExCP7-PM-S-L CALL POINT Maximum Power: 3.122W Input Voltage / Current: 48Vdc max 1A max / 24Vdc 3A max TYPE 4, 4X, 13 IP68 Year / Serial No.: 001CP7PM500010</p> <p>GNExCP7-PM-S-L PRODUCT LABEL 1</p>  <p>GNExCP7-PM-S-L PRODUCT LABEL 2</p>				<p>GNExCP7-PM-S-C CALL POINT Maximum Power: 3.122W Input Voltage / Current: 48Vdc max 20mA max TYPE 4, 4X, 13 IP68 Year / Serial No.: 001CP7PM500014</p> <p>GNExCP7-PM-S-C PRODUCT LABEL 1</p>  <p>GNExCP7-PM-S-C PRODUCT LABEL 2</p>	<table border="1"> <thead> <tr> <th>ISSUE</th> <th>MOD No.</th> <th>INITIAL/DATE</th> </tr> </thead> <tbody> <tr> <td>1</td> <td></td> <td>INTRODUCTION DH 19-06-2020</td> </tr> <tr> <td>2</td> <td></td> <td>UKCA Mark added RNP 25-04-2022</td> </tr> <tr> <td>3</td> <td></td> <td>Added LED -L & -C units. Updated temperature ratings. Added Sheets 2-3. MA 29-08-2023</td> </tr> </tbody> </table>	ISSUE	MOD No.	INITIAL/DATE	1		INTRODUCTION DH 19-06-2020	2		UKCA Mark added RNP 25-04-2022	3		Added LED -L & -C units. Updated temperature ratings. Added Sheets 2-3. MA 29-08-2023
ISSUE	MOD No.	INITIAL/DATE																			
1		INTRODUCTION DH 19-06-2020																			
2		UKCA Mark added RNP 25-04-2022																			
3		Added LED -L & -C units. Updated temperature ratings. Added Sheets 2-3. MA 29-08-2023																			
B									B												
C									C												
D	<p>GNExCP7-PM-D CALL POINT Maximum Power: 6.244W Input Voltage / Current: 48Vdc max 1A max / 24Vdc 3A max Input Voltage / Current: 250Vac 50/60Hz max 3.33A max TYPE 4, 4X, 13 IP68 Year / Serial No.: 001CP7PM000008</p> <p>GNExCP7-PM-D PRODUCT LABEL 1</p>  <p>GNExCP7-PM-D PRODUCT LABEL 2</p>			<p>GNExCP7-PM-D-L CALL POINT Maximum Power: 6.244W Input Voltage / Current: 48Vdc max 1A max / 24Vdc 3A max TYPE 4, 4X, 13 IP68 Year / Serial No.: 001CP7PM000018</p> <p>GNExCP7-PM-D-L PRODUCT LABEL 1</p>  <p>GNExCP7-PM-D-L PRODUCT LABEL 2</p>				<p>GNExCP7-PM-D-C CALL POINT Maximum Power: 6.244W Input Voltage / Current: 48Vdc max 20mA max TYPE 4, 4X, 13 IP68 Year / Serial No.: 001CP7PM000022</p> <p>GNExCP7-PM-D-C PRODUCT LABEL 1</p>  <p>GNExCP7-PM-D-C PRODUCT LABEL 2</p>	D												
E									E												
F									F												
G	<p>DRAWING TO BS8888:2000 GEOMETRIC TOLERANCES TO ISO1101:1983 LINEAR DIMENSIONAL TOLS +/-0.35mm ANGULAR DIMENSIONAL TOLS +/-2 deg</p> <p>DRAWN DATE 19-06-20 D.HOWGILL</p> <p>CHECKED DATE 19-06-20 R.N.POTTS</p> <p>STANDARDS GNEx CP7 CALL POINTS</p> <p>APPROVED DATE 19-06-20 R.N.POTTS</p>	<p>SURFACE FINISH</p> <p>MATERIAL</p> <p>ALTERNATIVE MATERIAL</p>	<p>WEIGHT (Kg)</p>	<p>THIS DRAWING AND ANY INFORMATION OR DESCRIPTIVE MATTER THEREIN IS COMMUNICATED IN CONFIDENCE AND IS THE COPYRIGHT PROPERTY OF EUROPEAN SAFETY SYSTEMS LTD. NEITHER THE WHOLE OR ANY EXTRACT MAY BE DISCLOSED, LOANED, COPIED OR USED FOR MANUFACTURING OR TENDERING PURPOSES WITHOUT THEIR WRITTEN CONSENT.</p> <p>EUROPEAN SAFETY SYSTEMS LTD. AS PER LATEST DATE OF ISSUE SHOWN ABOVE</p>	 <p>EUROPEAN SAFETY SYSTEMS LTD IMPRESS HOUSE MANSELL ROAD ACTON LONDON W3 7QH WWW.E2S.COM</p>	<p>ALL DIMENSIONS IN MM</p> <p>IF IN DOUBT, ASK - DO NOT SCALE</p> <p>TITLE GNEx CP7 PT / PB / PM PUSH BUTTON OPTION A1 CALL POINT PRODUCT LABEL</p> <p>SCALE 1:1 SHEET 3 of 3 DRAWING NUMBER D202-09-211</p>	 <p>A3</p>		G												

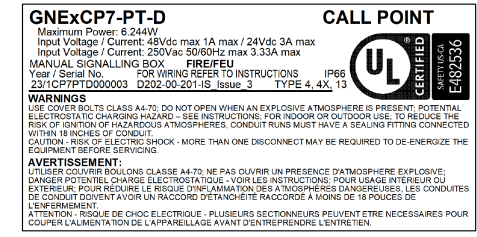
ISSUE	MOD No.	INITIAL/DATE
1		INTRODUCTION DH 19-06-2020
2		UKCA Mark added RNP 25-04-2022
3		Updated drawing layout. MA 30-08-2023



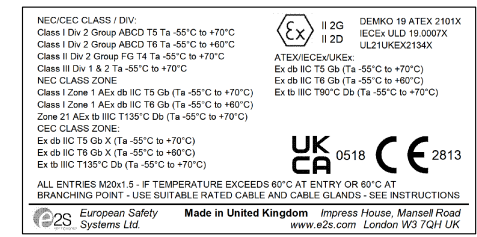
**GNEXP7-PT-S
 PRODUCT LABEL 1
 UL38**



**GNEXP7-PT-S
 PRODUCT LABEL 2
 UL38**



**GNEXP7-PT-D
 PRODUCT LABEL 1
 UL38**



**GNEXP7-PT-D
 PRODUCT LABEL 2
 UL38**

DRAWING TO BS8888:2000
 GEOMETRIC TOLERANCES TO ISO1101:1983
 LINEAR DIMENSIONAL TOLS +/-0.35mm
 ANGULAR DIMENSIONAL TOLS +/-2 deg

STANDARDS
**GNEXP7
 CALL POINTS**

DRAWN	DATE	19-06-20
D.HOWGILL		
CHECKED	DATE	19-06-20
R.N.POTTS		
APPROVED	DATE	19-06-20
R.N.POTTS		

SURFACE FINISH	WEIGHT (Kg)
MATERIAL	
ALTERNATIVE MATERIAL	

THIS DRAWING AND ANY INFORMATION OR DESCRIPTIVE MATTER THEREIN IS COMMUNICATED IN CONFIDENCE AND IS THE COPYRIGHT PROPERTY OF EUROPEAN SAFETY SYSTEMS LTD. NEITHER THE WHOLE OR ANY EXTRACT MAY BE DISCLOSED, LOANED, COPIED OR USED FOR MANUFACTURING OR TENDERING PURPOSES WITHOUT THEIR WRITTEN CONSENT.

© EUROPEAN SAFETY SYSTEMS LTD.
 AS PER LATEST DATE OF ISSUE SHOWN ABOVE

EUROPEAN SAFETY SYSTEMS LTD
 IMPRESS HOUSE
 MANSELL ROAD
 ACTON
 LONDON W3 7QH
 WWW.E2S.COM

ALL DIMENSIONS IN MM IF IN DOUBT, ASK - DO NOT SCALE		A3
TITLE GNEXP7-PT TOOL RESET PUSH BUTTON OPTION F1 FIRE CALL POINT PRODUCT LABEL		
SCALE 1:1	SHEET 1 of 1	DRAWING NUMBER D202-09-201

	1	2	3	4	5	6	7	8	9	10							
A										<table border="1"> <tr> <th>ISSUE</th> <th>MOD No.</th> <th>INITIAL/DATE</th> </tr> <tr> <td>1</td> <td></td> <td>INTRODUCTION MA 13-09-2023</td> </tr> </table>		ISSUE	MOD No.	INITIAL/DATE	1		INTRODUCTION MA 13-09-2023
ISSUE	MOD No.	INITIAL/DATE															
1		INTRODUCTION MA 13-09-2023															
B	<p>GNExCP7-PT-S CALL POINT Maximum Power: 3.122W Input Voltage / Current: 48Vdc max 1A max / 24Vdc 3A max Input Voltage / Current: 250Vac 50/60Hz max 3.33A max Year / Serial No.: 001CP7PT8000001</p> <p>INDUSTRIAL CONTROL EQUIPMENT FOR USE IN HAZARDOUS LOCATIONS ALL ENTRIES M20x1.5 - IF TEMPERATURE EXCEEDS 70°C AT ENTRY OR 80°C AT BRANCHING POINT - USE SUITABLE RATED CABLE AND CABLE GLANDS - SEE INSTRUCTIONS</p> <p>WARNING: USE COVER BOLTS CLASS A4-70. DO NOT OPEN WHEN AN EXPLOSIVE ATMOSPHERE IS PRESENT. POTENTIAL ELECTROSTATIC CHARGING HAZARD - SEE INSTRUCTIONS. FOR INDOOR OR OUTDOOR USE TO REDUCE THE RISK OF IGNITION OF HAZARDOUS ATMOSPHERES, CONDUIT RUNS MUST HAVE A SEALING FITTING CONNECTED WITHIN 18 INCHES OF CONDUIT CAUTION - RISK OF ELECTRIC SHOCK - MORE THAN ONE DISCONNECT MAY BE REQUIRED TO DE-ENERGIZE THE EQUIPMENT BEFORE SERVICING.</p> <p>ATENÇÃO: CLASSE DOS PARAFUSOS DA TAMPA A4-70. NÃO ABRA QUANDO UMA ATMOSFERA EXPLOSIVA ESTIVER PRESENTE. RISCO POTENCIAL DE DESCARGA ELETROSTÁTICA. LIMPAR SOMENTE COM PANO ÚMIDO. SE A TEMPERATURA EXCEBER 70 °C NA ENTRADA OU 80 °C NO PONTO DE RAMIFICAÇÃO, UTILIZE CABOS E PRENSA-CABOS ADEQUADOS. CONDUITES DE UTILIZADOS, DEVEM TER UMA SELAGEM PRÓXIMA AO INVÓLUCRO, NO MÁXIMO 18 POLEGADAS DE DISTÂNCIA.</p> <p>GNExCP7-PT-S (WITH MODULE) PRODUCT LABEL 1</p>			<p>GNExCP7-PB-S CALL POINT Maximum Power: 3.122W Input Voltage / Current: 48Vdc max 1A max / 24Vdc 3A max Input Voltage / Current: 250Vac 50/60Hz max 3.33A max Year / Serial No.: 001CP7PB8000003</p> <p>INDUSTRIAL CONTROL EQUIPMENT FOR USE IN HAZARDOUS LOCATIONS ALL ENTRIES M20x1.5 - IF TEMPERATURE EXCEEDS 70°C AT ENTRY OR 80°C AT BRANCHING POINT - USE SUITABLE RATED CABLE AND CABLE GLANDS - SEE INSTRUCTIONS</p> <p>WARNING: USE COVER BOLTS CLASS A4-70. DO NOT OPEN WHEN AN EXPLOSIVE ATMOSPHERE IS PRESENT. POTENTIAL ELECTROSTATIC CHARGING HAZARD - SEE INSTRUCTIONS. FOR INDOOR OR OUTDOOR USE TO REDUCE THE RISK OF IGNITION OF HAZARDOUS ATMOSPHERES, CONDUIT RUNS MUST HAVE A SEALING FITTING CONNECTED WITHIN 18 INCHES OF CONDUIT CAUTION - RISK OF ELECTRIC SHOCK - MORE THAN ONE DISCONNECT MAY BE REQUIRED TO DE-ENERGIZE THE EQUIPMENT BEFORE SERVICING.</p> <p>ATENÇÃO: CLASSE DOS PARAFUSOS DA TAMPA A4-70. NÃO ABRA QUANDO UMA ATMOSFERA EXPLOSIVA ESTIVER PRESENTE. RISCO POTENCIAL DE DESCARGA ELETROSTÁTICA. LIMPAR SOMENTE COM PANO ÚMIDO. SE A TEMPERATURA EXCEBER 70 °C NA ENTRADA OU 80 °C NO PONTO DE RAMIFICAÇÃO, UTILIZE CABOS E PRENSA-CABOS ADEQUADOS. CONDUITES DE UTILIZADOS, DEVEM TER UMA SELAGEM PRÓXIMA AO INVÓLUCRO, NO MÁXIMO 18 POLEGADAS DE DISTÂNCIA.</p> <p>GNExCP7-PB-S (WITH MODULE) PRODUCT LABEL 1</p>			<p>GNExCP7-PM-S CALL POINT Maximum Power: 3.122W Input Voltage / Current: 48Vdc max 1A max / 24Vdc 3A max Input Voltage / Current: 250Vac 50/60Hz max 3.33A max Year / Serial No.: 001CP7PMS000002</p> <p>INDUSTRIAL CONTROL EQUIPMENT FOR USE IN HAZARDOUS LOCATIONS ALL ENTRIES M20x1.5 - IF TEMPERATURE EXCEEDS 70°C AT ENTRY OR 80°C AT BRANCHING POINT - USE SUITABLE RATED CABLE AND CABLE GLANDS - SEE INSTRUCTIONS</p> <p>WARNING: USE COVER BOLTS CLASS A4-70. DO NOT OPEN WHEN AN EXPLOSIVE ATMOSPHERE IS PRESENT. POTENTIAL ELECTROSTATIC CHARGING HAZARD - SEE INSTRUCTIONS. FOR INDOOR OR OUTDOOR USE TO REDUCE THE RISK OF IGNITION OF HAZARDOUS ATMOSPHERES, CONDUIT RUNS MUST HAVE A SEALING FITTING CONNECTED WITHIN 18 INCHES OF CONDUIT CAUTION - RISK OF ELECTRIC SHOCK - MORE THAN ONE DISCONNECT MAY BE REQUIRED TO DE-ENERGIZE THE EQUIPMENT BEFORE SERVICING.</p> <p>ATENÇÃO: CLASSE DOS PARAFUSOS DA TAMPA A4-70. NÃO ABRA QUANDO UMA ATMOSFERA EXPLOSIVA ESTIVER PRESENTE. RISCO POTENCIAL DE DESCARGA ELETROSTÁTICA. LIMPAR SOMENTE COM PANO ÚMIDO. SE A TEMPERATURA EXCEBER 70 °C NA ENTRADA OU 80 °C NO PONTO DE RAMIFICAÇÃO, UTILIZE CABOS E PRENSA-CABOS ADEQUADOS. CONDUITES DE UTILIZADOS, DEVEM TER UMA SELAGEM PRÓXIMA AO INVÓLUCRO, NO MÁXIMO 18 POLEGADAS DE DISTÂNCIA.</p> <p>GNExCP7-PM-S (WITH MODULE) PRODUCT LABEL 1</p>										
C	<p>GNExCP7-PT-S (WITH MODULE) PRODUCT LABEL 2</p>			<p>GNExCP7-PB-S (WITH MODULE) PRODUCT LABEL 2</p>			<p>GNExCP7-PM-S (WITH MODULE) PRODUCT LABEL 2</p>										
D	<p>GNExCP7-PT-D CALL POINT Maximum Power: 6.244W Input Voltage / Current: 48Vdc max 1A max / 24Vdc 3A max Input Voltage / Current: 250Vac 50/60Hz max 3.33A max Year / Serial No.: 001CP7PTD000005</p> <p>INDUSTRIAL CONTROL EQUIPMENT FOR USE IN HAZARDOUS LOCATIONS ALL ENTRIES M20x1.5 - IF TEMPERATURE EXCEEDS 70°C AT ENTRY OR 80°C AT BRANCHING POINT - USE SUITABLE RATED CABLE AND CABLE GLANDS - SEE INSTRUCTIONS</p> <p>WARNING: USE COVER BOLTS CLASS A4-70. DO NOT OPEN WHEN AN EXPLOSIVE ATMOSPHERE IS PRESENT. POTENTIAL ELECTROSTATIC CHARGING HAZARD - SEE INSTRUCTIONS. FOR INDOOR OR OUTDOOR USE TO REDUCE THE RISK OF IGNITION OF HAZARDOUS ATMOSPHERES, CONDUIT RUNS MUST HAVE A SEALING FITTING CONNECTED WITHIN 18 INCHES OF CONDUIT CAUTION - RISK OF ELECTRIC SHOCK - MORE THAN ONE DISCONNECT MAY BE REQUIRED TO DE-ENERGIZE THE EQUIPMENT BEFORE SERVICING.</p> <p>ATENÇÃO: CLASSE DOS PARAFUSOS DA TAMPA A4-70. NÃO ABRA QUANDO UMA ATMOSFERA EXPLOSIVA ESTIVER PRESENTE. RISCO POTENCIAL DE DESCARGA ELETROSTÁTICA. LIMPAR SOMENTE COM PANO ÚMIDO. SE A TEMPERATURA EXCEBER 70 °C NA ENTRADA OU 80 °C NO PONTO DE RAMIFICAÇÃO, UTILIZE CABOS E PRENSA-CABOS ADEQUADOS. CONDUITES DE UTILIZADOS, DEVEM TER UMA SELAGEM PRÓXIMA AO INVÓLUCRO, NO MÁXIMO 18 POLEGADAS DE DISTÂNCIA.</p> <p>GNExCP7-PT-D (WITH MODULE) PRODUCT LABEL 1</p>			<p>GNExCP7-PB-D CALL POINT Maximum Power: 6.244W Input Voltage / Current: 48Vdc max 1A max / 24Vdc 3A max Input Voltage / Current: 250Vac 50/60Hz max 3.33A max Year / Serial No.: 001CP7PBD000007</p> <p>INDUSTRIAL CONTROL EQUIPMENT FOR USE IN HAZARDOUS LOCATIONS ALL ENTRIES M20x1.5 - IF TEMPERATURE EXCEEDS 70°C AT ENTRY OR 80°C AT BRANCHING POINT - USE SUITABLE RATED CABLE AND CABLE GLANDS - SEE INSTRUCTIONS</p> <p>WARNING: USE COVER BOLTS CLASS A4-70. DO NOT OPEN WHEN AN EXPLOSIVE ATMOSPHERE IS PRESENT. POTENTIAL ELECTROSTATIC CHARGING HAZARD - SEE INSTRUCTIONS. FOR INDOOR OR OUTDOOR USE TO REDUCE THE RISK OF IGNITION OF HAZARDOUS ATMOSPHERES, CONDUIT RUNS MUST HAVE A SEALING FITTING CONNECTED WITHIN 18 INCHES OF CONDUIT CAUTION - RISK OF ELECTRIC SHOCK - MORE THAN ONE DISCONNECT MAY BE REQUIRED TO DE-ENERGIZE THE EQUIPMENT BEFORE SERVICING.</p> <p>ATENÇÃO: CLASSE DOS PARAFUSOS DA TAMPA A4-70. NÃO ABRA QUANDO UMA ATMOSFERA EXPLOSIVA ESTIVER PRESENTE. RISCO POTENCIAL DE DESCARGA ELETROSTÁTICA. LIMPAR SOMENTE COM PANO ÚMIDO. SE A TEMPERATURA EXCEBER 70 °C NA ENTRADA OU 80 °C NO PONTO DE RAMIFICAÇÃO, UTILIZE CABOS E PRENSA-CABOS ADEQUADOS. CONDUITES DE UTILIZADOS, DEVEM TER UMA SELAGEM PRÓXIMA AO INVÓLUCRO, NO MÁXIMO 18 POLEGADAS DE DISTÂNCIA.</p> <p>GNExCP7-PB-D (WITH MODULE) PRODUCT LABEL 1</p>			<p>GNExCP7-PM-D CALL POINT Maximum Power: 6.244W Input Voltage / Current: 48Vdc max 1A max / 24Vdc 3A max Input Voltage / Current: 250Vac 50/60Hz max 3.33A max Year / Serial No.: 001CP7PMD000006</p> <p>INDUSTRIAL CONTROL EQUIPMENT FOR USE IN HAZARDOUS LOCATIONS ALL ENTRIES M20x1.5 - IF TEMPERATURE EXCEEDS 70°C AT ENTRY OR 80°C AT BRANCHING POINT - USE SUITABLE RATED CABLE AND CABLE GLANDS - SEE INSTRUCTIONS</p> <p>WARNING: USE COVER BOLTS CLASS A4-70. DO NOT OPEN WHEN AN EXPLOSIVE ATMOSPHERE IS PRESENT. POTENTIAL ELECTROSTATIC CHARGING HAZARD - SEE INSTRUCTIONS. FOR INDOOR OR OUTDOOR USE TO REDUCE THE RISK OF IGNITION OF HAZARDOUS ATMOSPHERES, CONDUIT RUNS MUST HAVE A SEALING FITTING CONNECTED WITHIN 18 INCHES OF CONDUIT CAUTION - RISK OF ELECTRIC SHOCK - MORE THAN ONE DISCONNECT MAY BE REQUIRED TO DE-ENERGIZE THE EQUIPMENT BEFORE SERVICING.</p> <p>ATENÇÃO: CLASSE DOS PARAFUSOS DA TAMPA A4-70. NÃO ABRA QUANDO UMA ATMOSFERA EXPLOSIVA ESTIVER PRESENTE. RISCO POTENCIAL DE DESCARGA ELETROSTÁTICA. LIMPAR SOMENTE COM PANO ÚMIDO. SE A TEMPERATURA EXCEBER 70 °C NA ENTRADA OU 80 °C NO PONTO DE RAMIFICAÇÃO, UTILIZE CABOS E PRENSA-CABOS ADEQUADOS. CONDUITES DE UTILIZADOS, DEVEM TER UMA SELAGEM PRÓXIMA AO INVÓLUCRO, NO MÁXIMO 18 POLEGADAS DE DISTÂNCIA.</p> <p>GNExCP7-PM-D (WITH MODULE) PRODUCT LABEL 1</p>										
E	<p>GNExCP7-PT-D (WITH MODULE) PRODUCT LABEL 2</p>			<p>GNExCP7-PB-D (WITH MODULE) PRODUCT LABEL 2</p>			<p>GNExCP7-PM-D (WITH MODULE) PRODUCT LABEL 2</p>										
F	<p>GNExCP7-PT-D (WITH MODULE) PRODUCT LABEL 2</p>			<p>GNExCP7-PB-D (WITH MODULE) PRODUCT LABEL 2</p>			<p>GNExCP7-PM-D (WITH MODULE) PRODUCT LABEL 2</p>										

G	DRAWING TO BS8888:2000 GEOMETRIC TOLERANCES TO ISO1101:1983 LINEAR DIMENSIONAL TOLS +/-0.35mm ANGULAR DIMENSIONAL TOLS +/-2 deg	DRAWN M.ABALOS	DATE 13-09-2023	SURFACE FINISH	WEIGHT (Kg)	<p>THIS DRAWING AND ANY INFORMATION OR DESCRIPTIVE MATTER THEREIN IS COMMUNICATED IN CONFIDENCE AND IS THE COPYRIGHT PROPERTY OF EUROPEAN SAFETY SYSTEMS LTD. NEITHER THE WHOLE OR ANY EXTRACT MAY BE DISCLOSED, LOANED, COPIED OR USED FOR MANUFACTURING OR TENDERING PURPOSES WITHOUT THEIR WRITTEN CONSENT.</p> <p>C EUROPEAN SAFETY SYSTEMS LTD. AS PER LATEST DATE OF ISSUE SHOWN ABOVE</p>	<p>EUROPEAN SAFETY SYSTEMS LTD IMPRESS HOUSE MANSELL ROAD ACTON LONDON W3 7QH WWW.E2S.COM</p>	ALL DIMENSIONS IN MM IF IN DOUBT, ASK - DO NOT SCALE		A3
	STANDARDS GNEx CP7 CALL POINTS	CHECKED R.N.POTTS	DATE 13-09-2023	MATERIAL	TITLE GNEx CP7 PT / PB / PM PUSH BUTTON CALL POINT WITH MODULE PRODUCT LABEL					
	APPROVED R.N.POTTS	DATE 13-09-2023	ALTERNATIVE MATERIAL	SCALE 1:1	SHEET 1 of 1			DRAWING NUMBER D202-09-251		